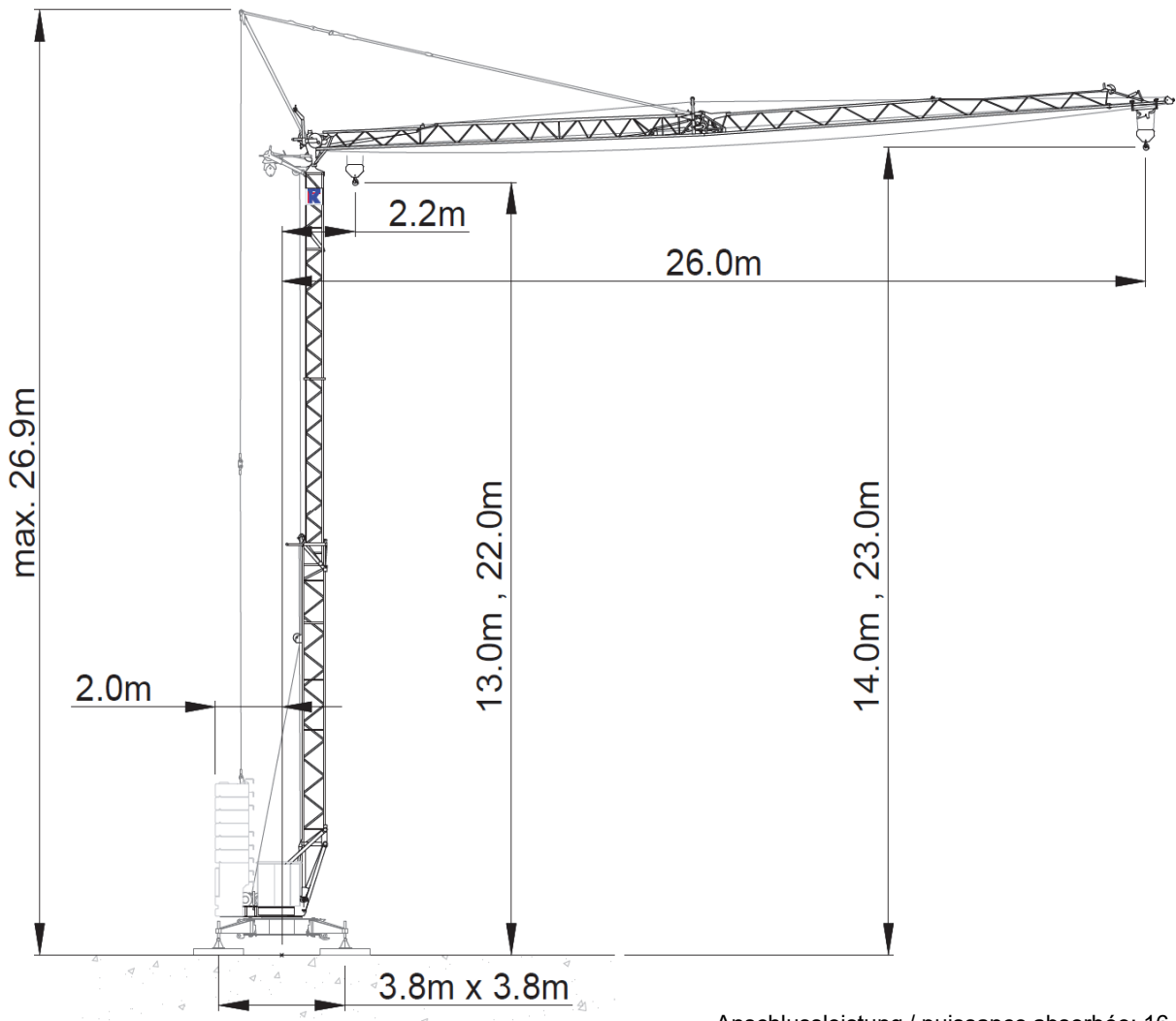






# Liebherr 26K.1



Anschlussleistung / puissance absorbée: 16 kVA  
 Anschluss / câble d'alimentation: 4 x 10<sup>□</sup>  
 Absicherung / sécurisée: 35 A  
 Anlaufstrom / courant de pointe maxi: 24 A

Ausladung (m) / portée (m)		10	11	12	13	14	15	16	17	18	19	20	21	22	23	24	25	26		
Auslegerlänge (m) / fleche (m)	2.2 - 12.0	 2.5 to	2.5	2.5	2.5	2.28	2.09	1.93	1.79	1.66	1.56	1.46	1.37	1.3	1.23	1.16	1.1	1.05	1.0	Tragfähigkeit (t) capacité de charge (t)

 Motor FU (kW) 11 m/min. 4.0 - 50	 Motor (kW) 1.1 / 1.9 m/min. 18 / 36	 Motor (kW) 1.5 r.p.m 0 - 0.8



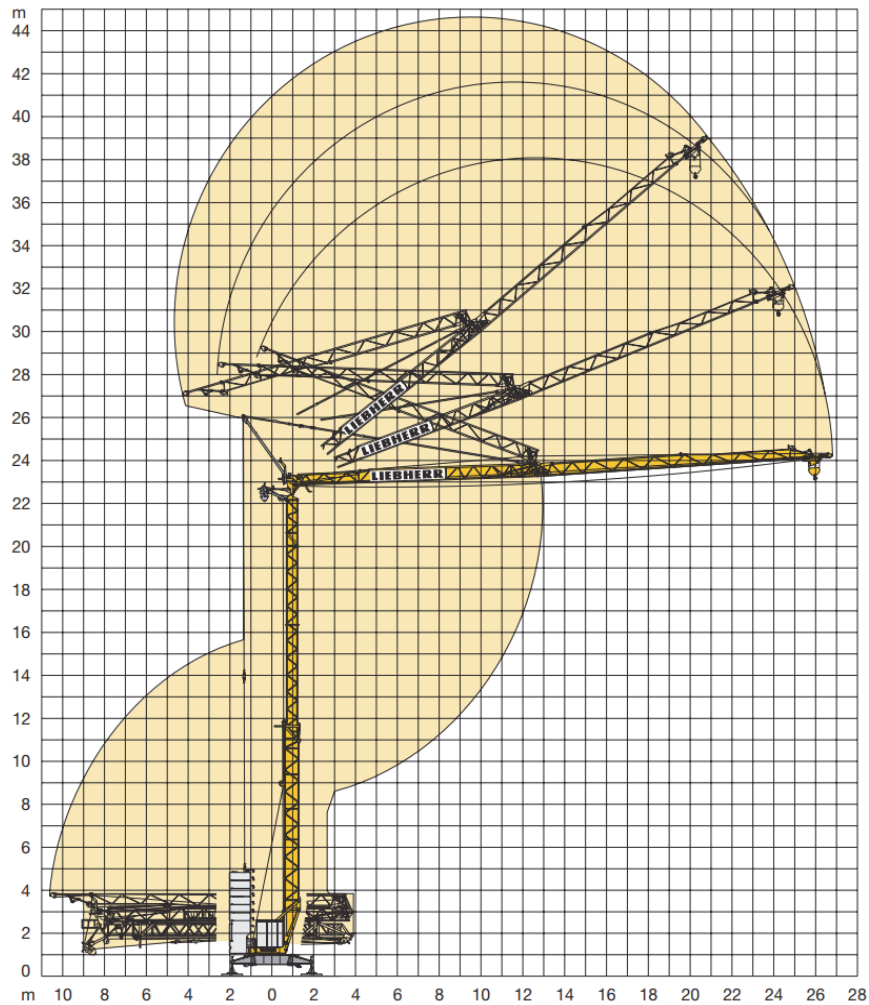
Kaufmann Turmkrane AG  
 info@krankaufmann.ch  
 turmkrane.ch

Rütisbergstrasse 8  
 8156 Oberhasli  
 +41 43 411 08 30

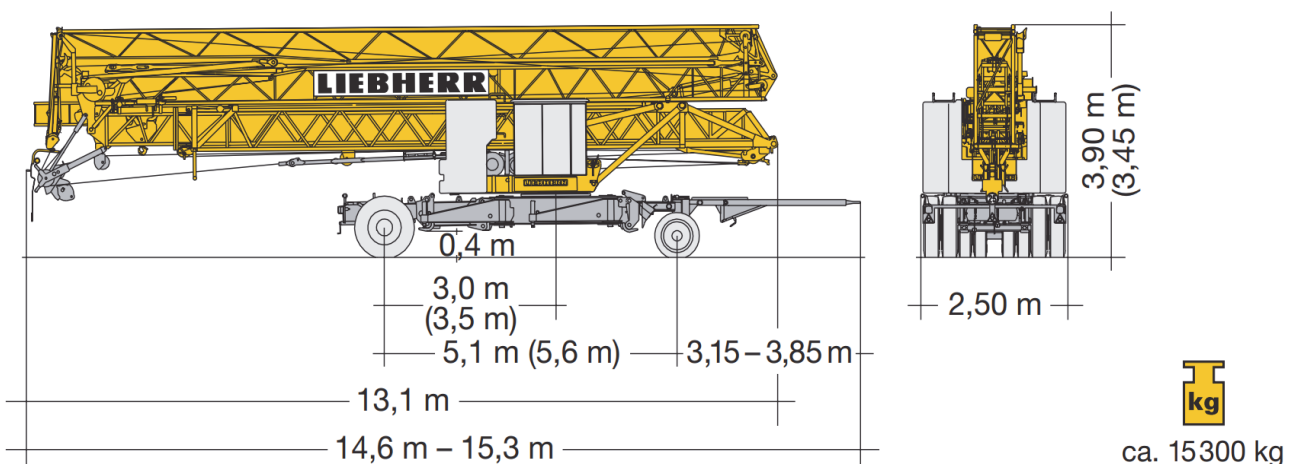
Rue de Long Vernex 1  
 1545 Chevroux  
 +41 26 667 00 28

# Liebherr 26K.1

## Montage / erection



## Transport / transport



Kaufmann Turmkrane AG  
[info@krankaufmann.ch](mailto:info@krankaufmann.ch)  
[turmkrane.ch](http://turmkrane.ch)

Rütisbergstrasse 8  
 8156 Oberhasli  
 +41 43 411 08 30

Rue de Long Vernex 1  
 1545 Chevroux  
 +41 26 667 00 28