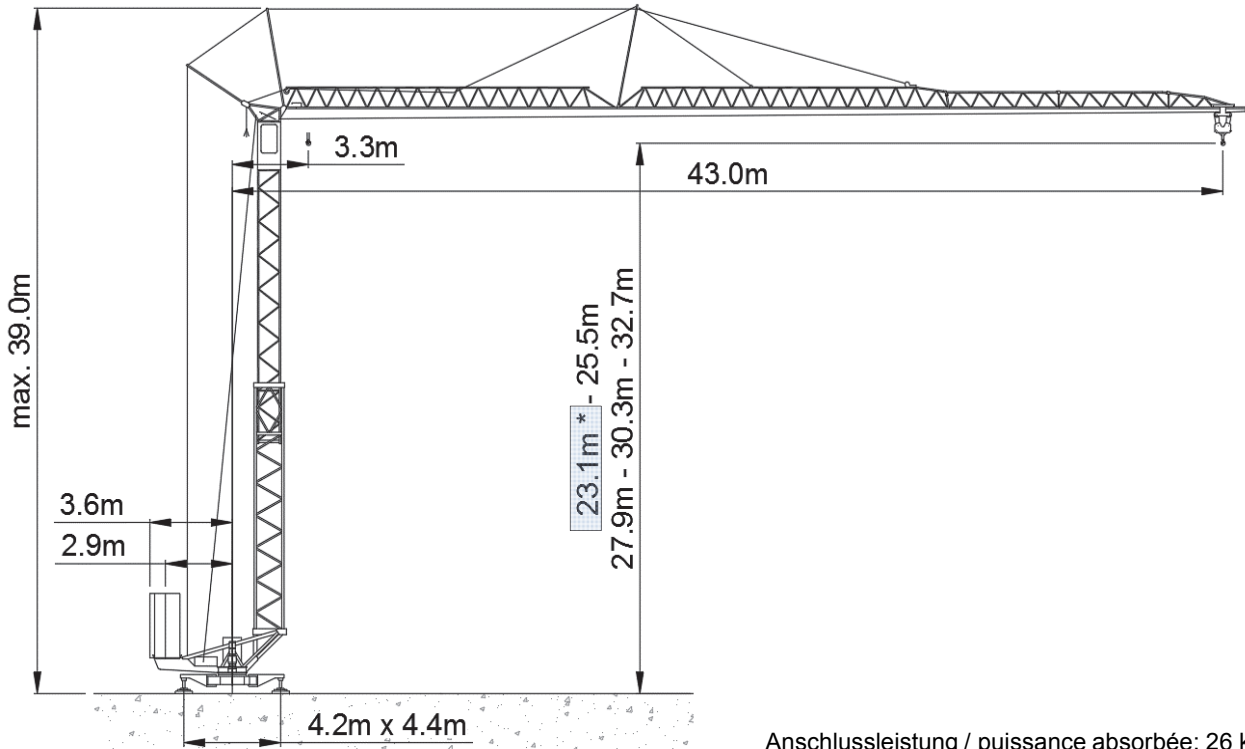


Liebherr 63K



* Standardhakenhöhe

Anschlussleistung / puissance absorbée: 26 kVA
 Anschluss / câble d'alimentation: 4 x 10□
 Absicherung / sécurisée: 63 A
 Anlaufstrom / courant de pointe maxi: 94 A

Ausladung (m) / portée (m)		11	12	14	16	18	20	22	24	26	28	30	32	34	35	37	39	40	43				
Auslegerlänge (m) flèche (m)	43	3.3 - 19.5		3.0	3.0	3.0	3.0	3.0	2.95	2.65	2.37	2.14	1.95	1.75	1.64	1.51	1.46	1.35	1.26	1.22	1.10	Tragfähigkeit (t) capacité de charge (t)	
	40	3.3 - 20.6		3.0	3.0	3.0	3.0	3.0	3.0	2.81	2.52	2.28	2.07	1.90	1.75	1.61	1.55	1.44	1.34	1.30			
	35	3.3 - 21.7		3.0	3.0	3.0	3.0	3.0	3.0	3.05	2.74	2.48	2.26	2.07	1.91	1.76	1.70						
	30	3.3 - 23.3		3.0 to	3.0	3.0	3.0	3.0	3.0	3.0	2.95	2.69	2.35	2.25									

Ausladung (m) / portée (m)		11	12	14	16	18	20	22	24	26	28	30	32	34	35	37	39	40	43				
Auslegerlänge (m) flèche (m)	43	3.3 - 11.6		6.0	5.73	4.70	3.96	3.41	3.00	2.65	2.37	2.14	1.95	1.75	1.64	1.51	1.46	1.35	1.26	1.22	1.10	Tragfähigkeit (t) capacité de charge (t)	
	40	3.3 - 12.1		6.0	6.0	4.97	4.19	3.62	3.17	2.81	2.52	2.28	2.07	1.90	1.75	1.61	1.55	1.44	1.34	1.30			
	35	3.3 - 12.7		6.0	6.0	5.37	4.54	3.92	3.44	3.05	2.74	2.48	2.26	2.07	1.91	1.76	1.70						
	30	3.3 - 13.8		6.0 to	6.0	6.0	5.80	4.90	4.24	3.72	3.31	2.95	2.69	2.35	2.25								

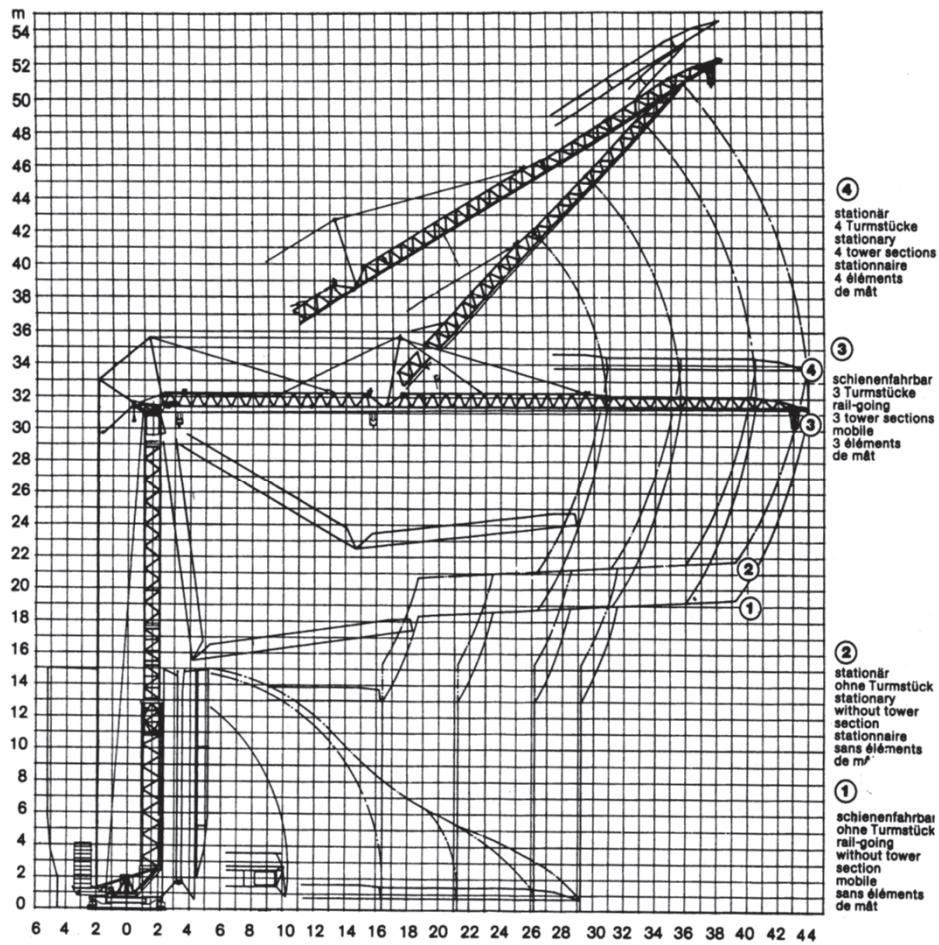
	Motor (kW)	15.6		Motor (kW)	1.5 / 2.2		Motor (kW)	3
	m/min.	6.5 - 53		m/min.	20 / 40		r.p.m	0 - 0.8



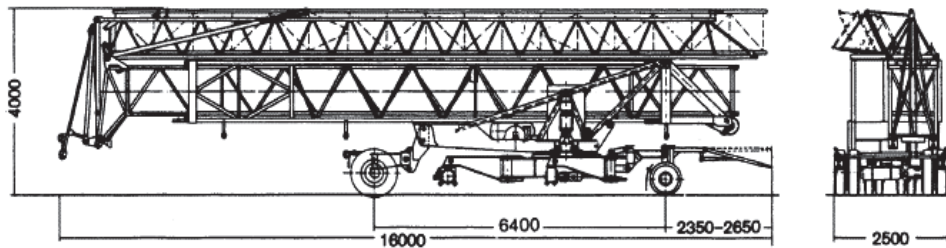
Kaufmann Turmkrane AG
 Rütisbergstr. 8, CH-8156 Oberhasli / ZH
 Tel. 043 411 08 30
www.turmkrane.ch / info@krankaufmann.ch

Liebherr 63K

Montage / erection



Transport / transport



Transportgewicht 18140 kg



Kaufmann Turmkrane AG

Rütisbergstr. 8, CH-8156 Oberhasli / ZH

Tel. 043 411 08 30

www.turmkrane.ch / info@krankaufmann.ch