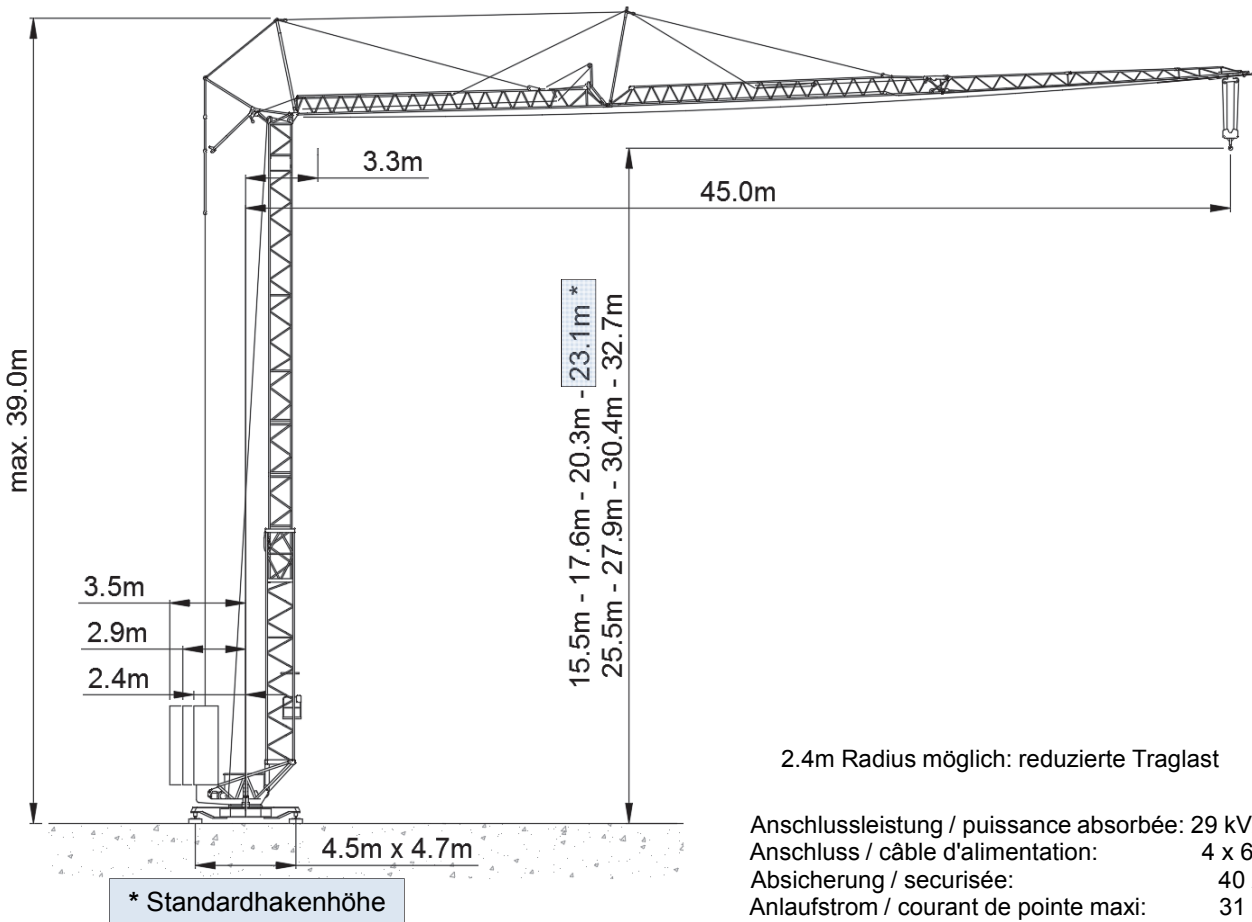


# Liebherr 71K



Ausladung (m) / portée (m)		10	12	14	16	18	20	22	24	26	28	30	31	33	35	37	39	42	45	Tragfähigkeit (t) capacité de charge (t)		
Auslegerlänge (m) flèche (m)	45	3.3 - 20.0		3.0	3.0	3.0	3.0	3.0	3.0	2.69	2.43	2.21	2.03	1.86	1.79	1.65	1.54	1.43	1.33		1.21	1.10
	42	3.3 - 21.7		3.0	3.0	3.0	3.0	3.0	3.0	2.96	2.68	2.44	2.24	2.06	1.98	1.83	1.71	1.59	1.49		1.35	
	37	3.3 - 22.9		3.0	3.0	3.0	3.0	3.0	3.0	3.0	2.85	2.60	2.38	2.20	2.11	1.96	1.82	1.70				
	31	3.3 - 24.7		3.0 to	3.0	3.0	3.0	3.0	3.0	3.0	3.0	2.82	2.59	2.39	2.30							

Ausladung (m) / portée (m)		10	12	14	16	18	20	22	24	26	28	30	31	33	35	37	39	42	45	Tragfähigkeit (t) capacité de charge (t)		
Auslegerlänge (m) flèche (m)	45	3.3 - 10.7		6.0	5.29	4.47	3.86	3.39	3.00	2.69	2.43	2.21	2.03	1.86	1.79	1.65	1.54	1.43	1.33		1.21	1.10
	42	3.3 - 11.6		6.0	5.78	4.90	4.23	3.71	3.30	2.96	2.68	2.44	2.24	2.06	1.98	1.83	1.71	1.59	1.49		1.35	
	37	3.3 - 12.2		6.0	6.0	5.19	4.49	3.94	3.51	3.15	2.85	2.60	2.38	2.20	2.11	1.96	1.82	1.70				
	31	3.3 - 13.1		6.0 to	6.0	6.0	5.61	4.85	4.27	3.80	3.41	3.09	2.82	2.59	2.39	2.30						

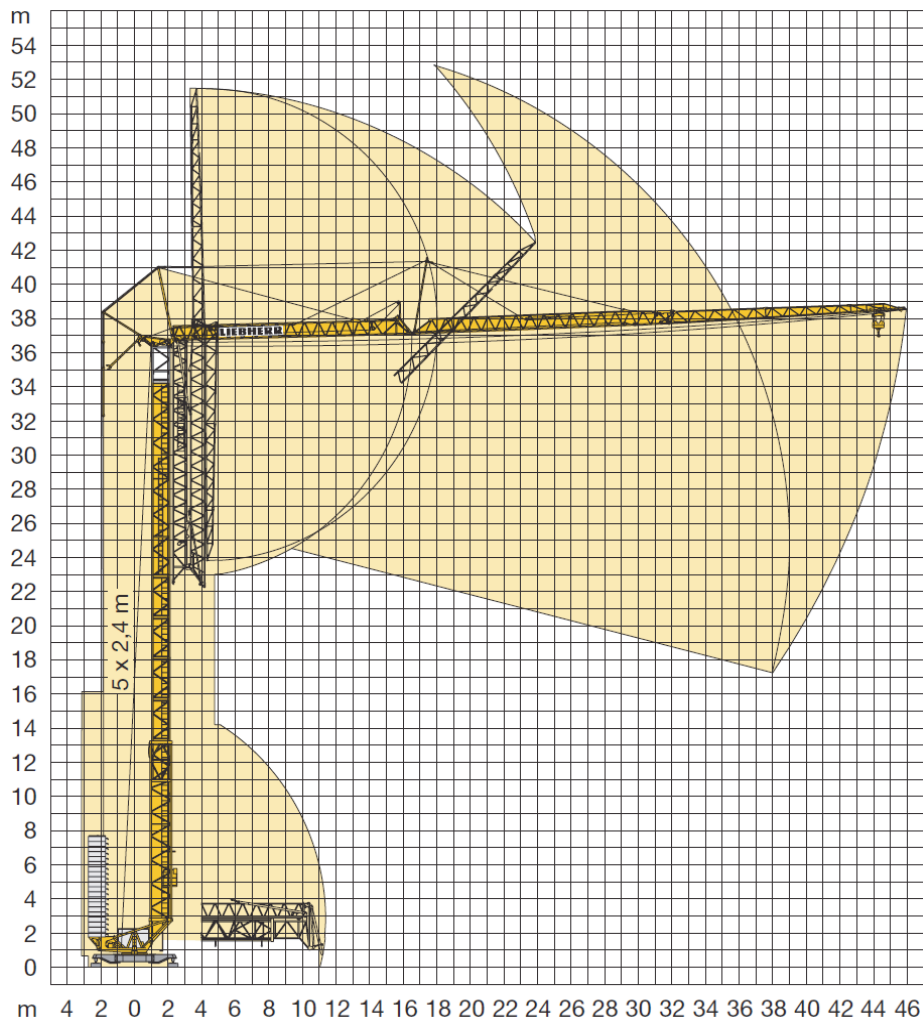
	Motor FU (kW)	15		Motor FU (kW)	2.8		Motor (kW)	5
	m/min.	2.5 - 58		m/min.	0 - 60		r.p.m	0 - 0.8



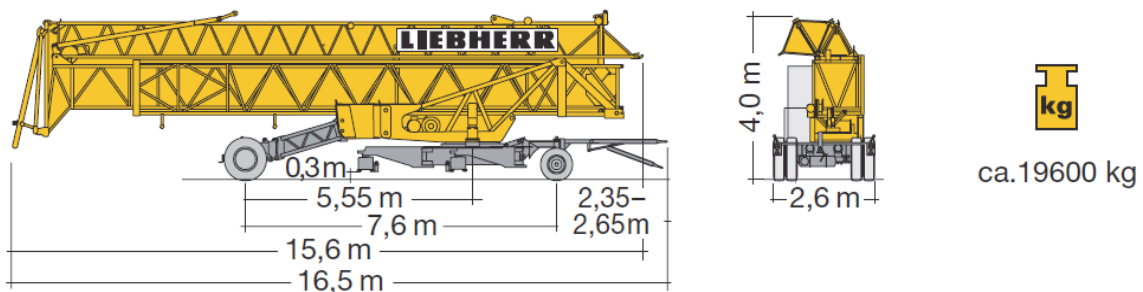
**Kaufmann Turmkrane AG**  
 Rütisbergstr. 8, CH-8156 Oberhasli / ZH  
 Tel. 043 411 08 30  
[www.turmkrane.ch](http://www.turmkrane.ch) / [info@krankaufmann.ch](mailto:info@krankaufmann.ch)

# Liebherr 71K

## Montage / erection



## Transport / transport



**Kaufmann Turmkrane AG**

Rütisbergstr. 8, CH-8156 Oberhasli / ZH

Tel. 043 411 08 30

[www.turmkrane.ch](http://www.turmkrane.ch) / [info@krankaufmann.ch](mailto:info@krankaufmann.ch)