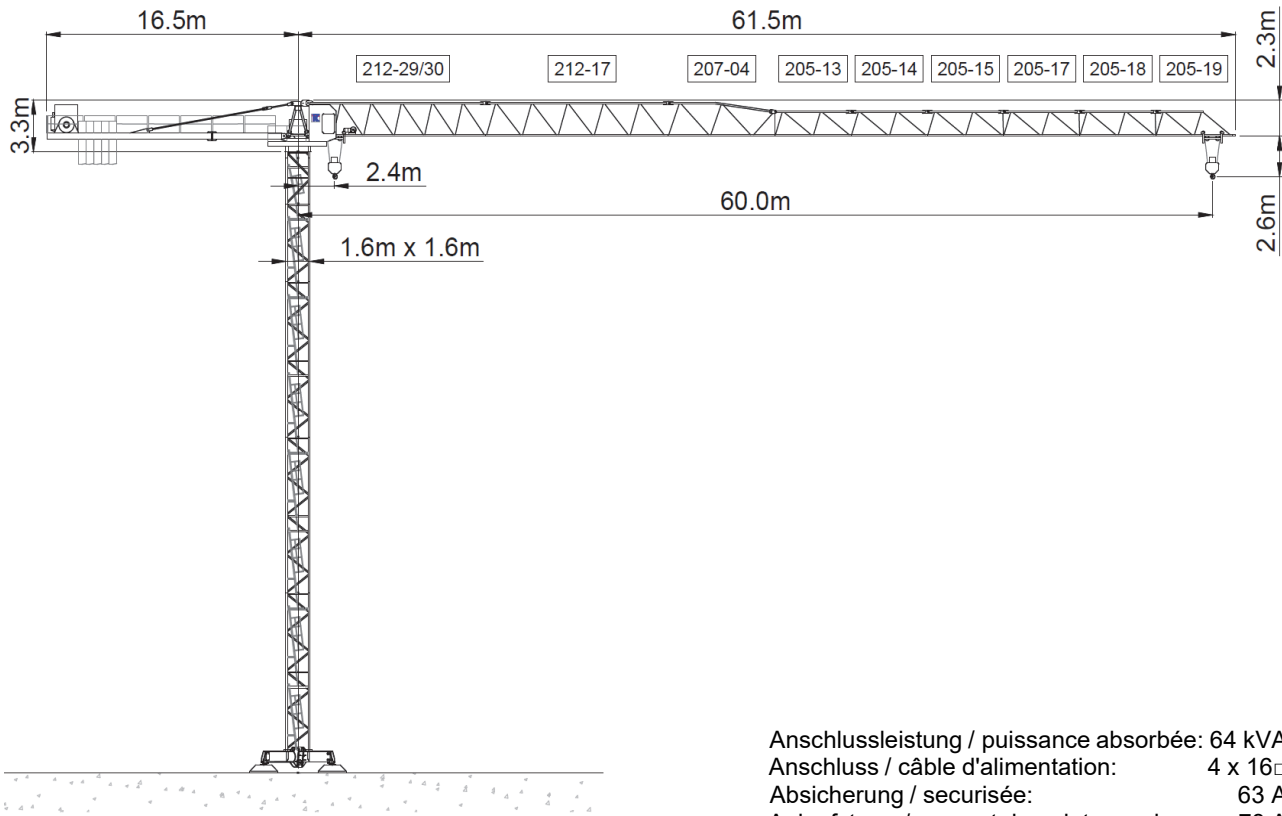


Potain MDT 162



Anschlussleistung / puissance absorbée: 64 kVA
 Anschluss / câble d'alimentation: 4 x 16□
 Absicherung / sécurisée: 63 A
 Anlaufstrom / courant de pointe maxi: 78 A

Ausladung (m) / portée (m)		20	22	25	27	30	32	35	37	40	42	45	47	50	52	55	57	60	Tragfähigkeit (t) capacité de charge (t)	
Auslegerlänge (m) flèche (m)	60	2.4 - 17.3	6.8	6.0	5.3	4.8	4.3	4.0	3.6	3.3	3.0	2.9	2.6	2.5	2.3	2.2	2.0	1.9		1.8
	55	2.4 - 19.7	7.8	7.1	6.1	5.6	5.0	4.6	4.2	3.9	3.5	3.3	3.1	2.9	2.7	2.6	2.4			
	50	2.4 - 21.4	8.0	7.8	6.7	6.2	5.5	5.1	4.6	4.3	3.9	3.7	3.4	3.2	3.0					
	45	2.4 - 22.9	8.0	8.0	7.3	6.7	5.9	5.5	5.0	4.7	4.3	4.0	3.7							
	40	2.4 - 24.0	8.0	8.0	7.7	7.0	6.3	5.8	5.3	4.9	4.5									
	35	2.4 - 24.3	8.0	8.0	7.7	7.1	6.3	5.9	5.3											
	30	2.4 - 23.9	8.0	8.0	7.6	7.0	6.2													
			8.0 to																	

Ausladung (m) / portée (m)		20	22	25	27	30	32	35	37	40	42	45	47	50	52	55	57	60	Tragfähigkeit (t) capacité de charge (t)	
Auslegerlänge (m) flèche (m)	60	2.4 - 32.0	4.0	4.0	4.0	4.0	4.0	4.0	3.6	3.3	3.0	2.9	2.6	2.5	2.3	2.2	2.0	1.9		1.8
	55	2.4 - 36.0	4.0	4.0	4.0	4.0	4.0	4.0	4.0	3.9	3.5	3.3	3.1	2.9	2.7	2.6	2.4			
	50	2.4 - 39.0	4.0	4.0	4.0	4.0	4.0	4.0	4.0	4.0	3.9	3.7	3.4	3.2	3.0					
	45	2.4 - 42.0	4.0	4.0	4.0	4.0	4.0	4.0	4.0	4.0	4.0	4.0	3.7							
	40	2.4 - 40.0	4.0	4.0	4.0	4.0	4.0	4.0	4.0	4.0	4.0	4.0								
	35	2.4 - 35.0	4.0	4.0	4.0	4.0	4.0	4.0	4.0											
	30	2.4 - 30.0	4.0	4.0	4.0	4.0	4.0	4.0												
			4.0 to																	

	Motor FU (kW)	37		Motor FU (kW)	5.5		Motor (kW)	2 x 4.4
	m/min.	1.8 - 110		m/min.	11 - 33 - 66		r.p.m	0 - 0.81



Kaufmann Turmkrane AG
 Rütisbergstr. 8, CH-8156 Oberhasli / ZH
 Tel. 043 411 08 30
www.turmkrane.ch / info@krankaufmann.ch