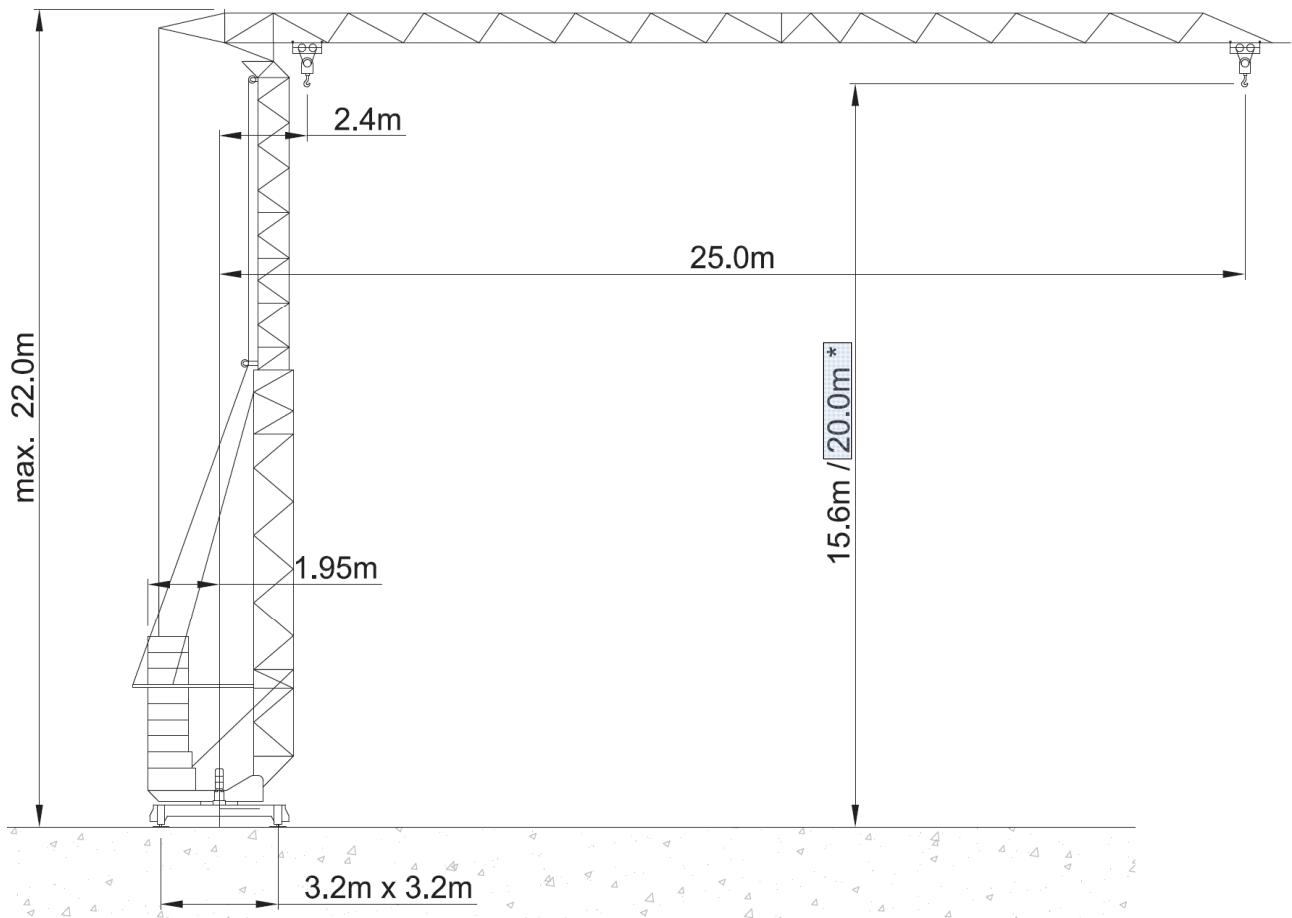






Peiner SMK 202



* Standardhakenhöhe

Anschlussleistung / puissance absorbée: 17 kVA
 Anschluss / câble d'alimentation: 4 x 6□
 Absicherung / sécurisée: 40 A
 Anlaufstrom / courant de pointe maxi: 45 A

Ausladung (m) / portée (m)			15	20	25		
Auslegerlänge (m) flèche (m)	25	2.4 - 13.7	 2.2 to	2.1	1.5	1.1	Tragfähigkeit (t) capacité de charge (t)

 Motor (kW) m/min.	7.5 5 - 40	 Motor (kW) m/min.	3 30	 Motor (kW) r.p.m	2.2 0 - 0.9
--	---------------	--	---------	---	----------------



Kaufmann Turmkrane AG
 Rütisbergstr. 8, CH-8156 Oberhasli / ZH
 Tel. 043 411 08 30
www.turmkrane.ch / info@krankaufmann.ch