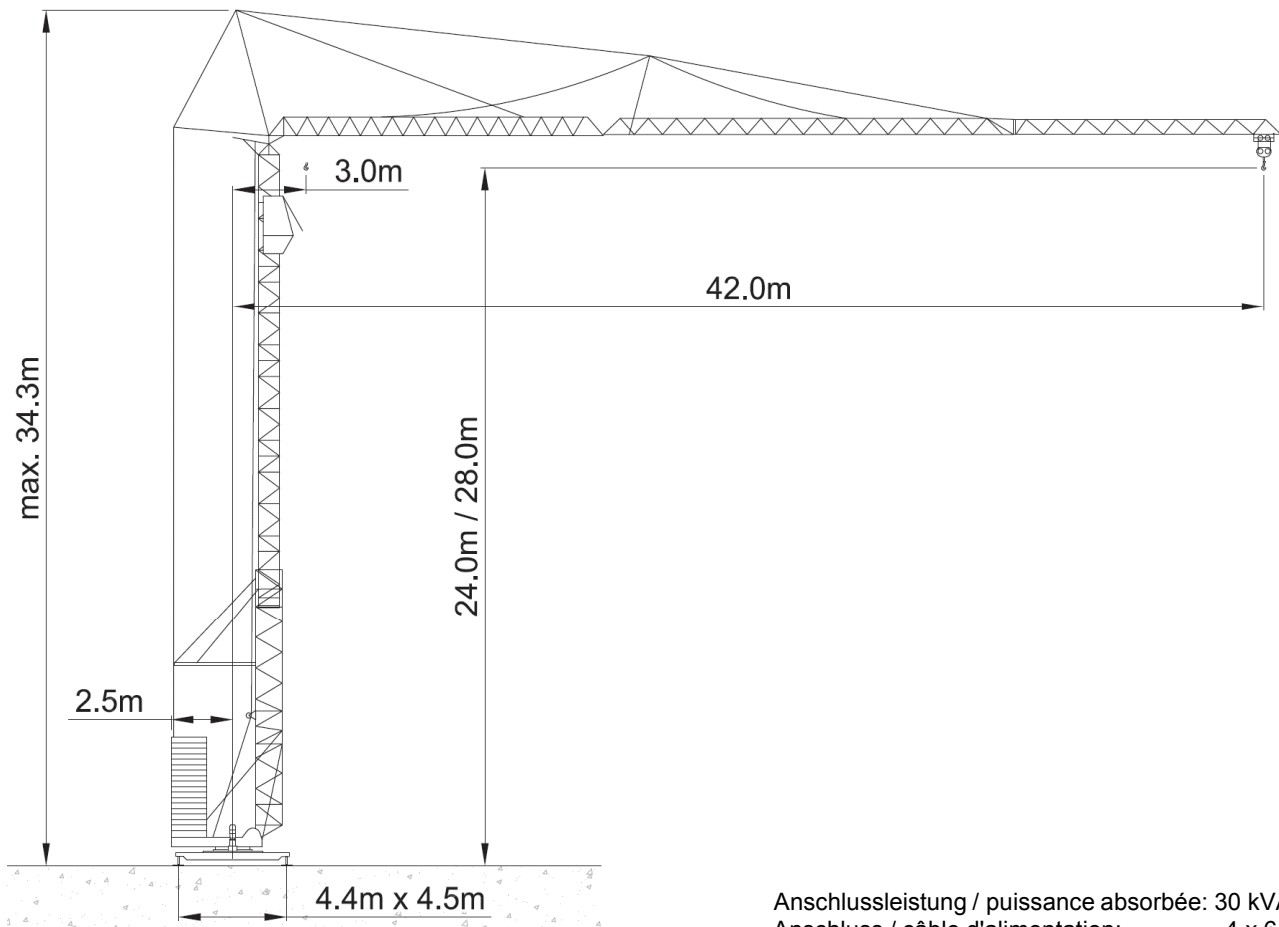






# Peiner SMK 308 FU



Anschlussleistung / puissance absorbée: 30 kVA  
 Anschluss / câble d'alimentation: 4 x 6□  
 Absicherung / sécurisée: 40 A  
 Anlaufstrom / courant de pointe maxi: 32 A

Ausladung (m) / portée (m)				15	20	25	30	36	40	42	
Auslegerlänge (m) flèche (m)	42	3.0 - 11.8	 5.0 to	3.69	2.68	2.08	1.68	1.34	1.17	1.1	Tragfähigkeit (t) capacité de charge (t)

 Motor FU (kW)      15 m/min.                3 - 52	 Motor FU (kW)      4 m/min.                50 / 25	 Motor (kW)            4.8 r.p.m                    0 - 0.85



**Kaufmann Turmkrane AG**  
 Rütisbergstr. 8, CH-8156 Oberhasli / ZH  
 Tel. 043 411 08 30  
[www.turmkrane.ch](http://www.turmkrane.ch) / [info@rankaufmann.ch](mailto:info@rankaufmann.ch)