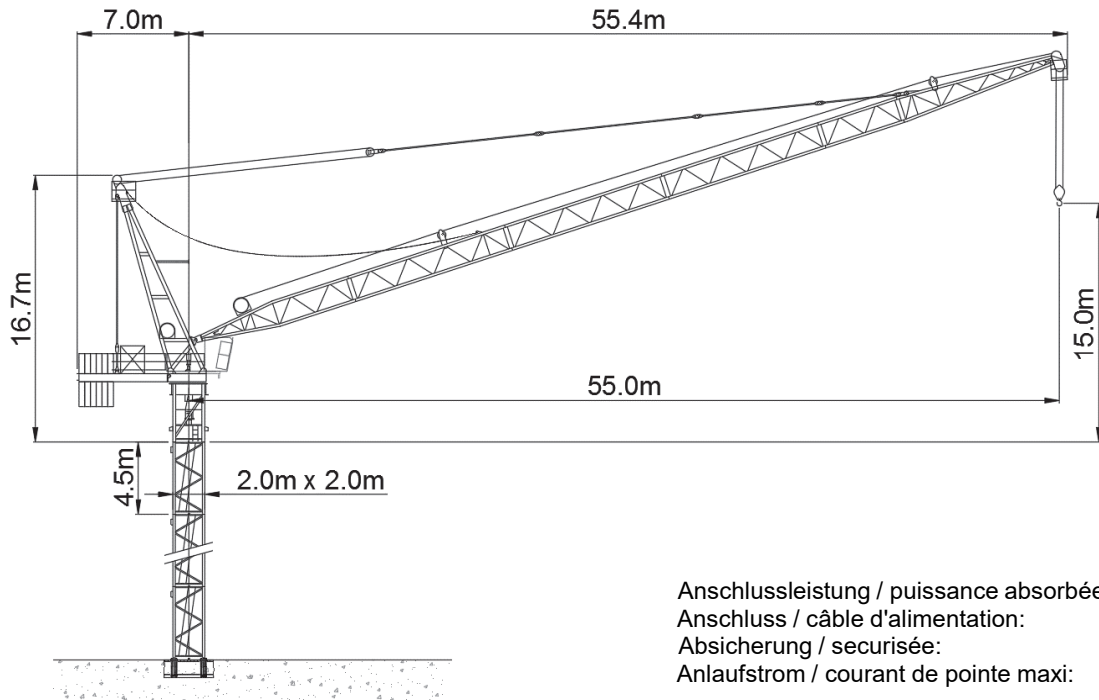





# Wolff WK 180 B CCplus






Anschlussleistung / puissance absorbée: 183 kVA  
 Anschluss / câble d'alimentation: 4 x 70□  
 Absicherung / sécurisée: 200 A  
 Anlaufstrom / courant de pointe maxi: 283 A

Ausladung (m) / portée (m)		25	30	35	40		
Auslegerlänge (m) flèche (m)	3.4 - 17.0	 <b>18.0 to</b>	11.1	8.7	6.9	5.6	Tragfähigkeit (t) capacité de charge (t)
	2.8 - 18.0		11.6	8.9			

Ausladung (m) / portée (m)			25	30	35	40	45	50	55		
Auslegerlänge (m) flèche (m)	55	4.3 - 21.0	 <b>12.0 to</b>	9.5	7.3	5.7	4.5	3.6	2.9	2.3	Tragfähigkeit (t) capacité de charge (t)
	50	4.0 - 22.0		10.1	7.9	6.2	5.0	4.1	3.3		
	40	3.4 - 24.0		11.4	9.0	7.3	6.0				
	30	2.8 - 25.0		12.0	9.3						

Ausladung (m) / portée (m)			25	30	35	40	45	50	55		
Auslegerlänge (m) flèche (m)	55	4.5 - 35.0	 <b>6.0 to</b>	6.0	6.0	6.0	4.8	3.9	3.1	2.5	Tragfähigkeit (t) capacité de charge (t)
	50	4.2 - 37.0		6.0	6.0	6.0	5.3	4.3	3.5		
	40	3.6 - 40.0		6.0	6.0	6.0	6.0				
	30	3.0 - 30.0		6.0	6.0						

	Motor FU (kW)	75		Motor FU (kW)	60		Motor FU (kW) 2 x 6	
	m/min.	21 - 185		m/min.	1.3 - 2.0		r.p.m	0.6 - 0.9



**Kaufmann Turmkrane AG**  
 Rütisbergstr. 8, CH-8156 Oberhasli / ZH  
 Tel. 043 411 08 30  
[www.turmkrane.ch](http://www.turmkrane.ch) / [info@krankaufmann.ch](mailto:info@krankaufmann.ch)