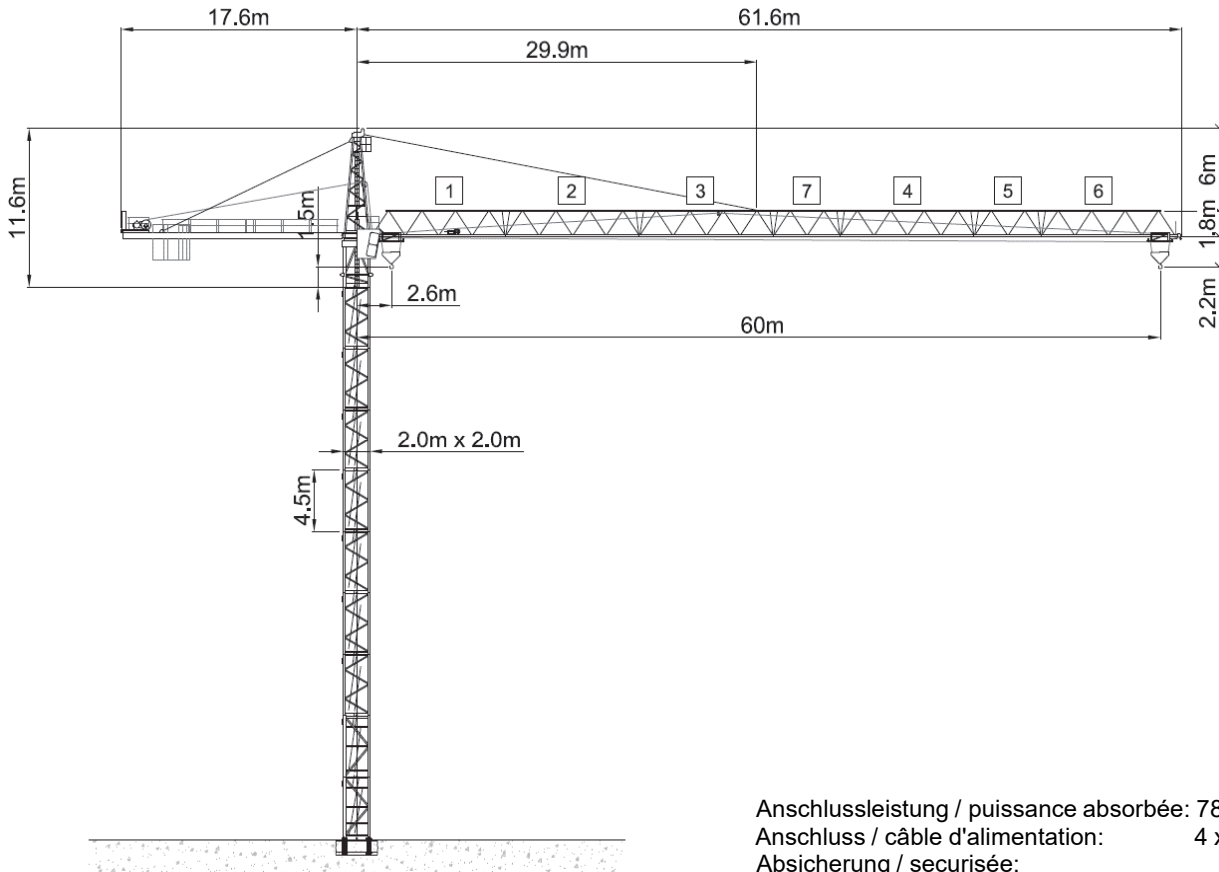






Wolff WK 192 FL B



Anschlussleistung / puissance absorbée: 78 kVA
 Anschluss / câble d'alimentation: 4 x 25□
 Absicherung / sécurisée: 80 A
 Anlaufstrom / courant de pointe maxi: 95 A

Ausladung (m) / portée (m)			30	35	40	45	50	55	60		
Auslegerlänge (m) flèche (m)	60	2.6 - 26.47	 6.0 to	5.2	4.34	3.7	3.2	2.8	2.47	2.2	Tragfähigkeit (t) capacité de charge (t)
	55	2.6 - 33.16		6.0	5.64	4.83	4.21	3.71	3.3		
	50	2.6 - 37.5		6.0	6.0	5.57	4.86	4.3			
	45	2.6 - 39.37		6.0	6.0	5.89	5.15				
	40	2.6 - 39.41		6.0	6.0	5.9					
	35	2.6 - 35.0		6.0	6.0						
	30	2.6 - 30.0		6.0							

 Motor FU (kW) 45 m/min. 1 - 100	 Motor FU (kW) 7.5 m/min. 8 - 100	 Motor (kW) 2 x 5.7 r.p.m 0.75
--	---	--



Kaufmann Turmkrane AG
 Rütisbergstr. 8, CH-8156 Oberhasli / ZH
 Tel. 043 411 08 30
www.turmkrane.ch / info@krankaufmann.ch