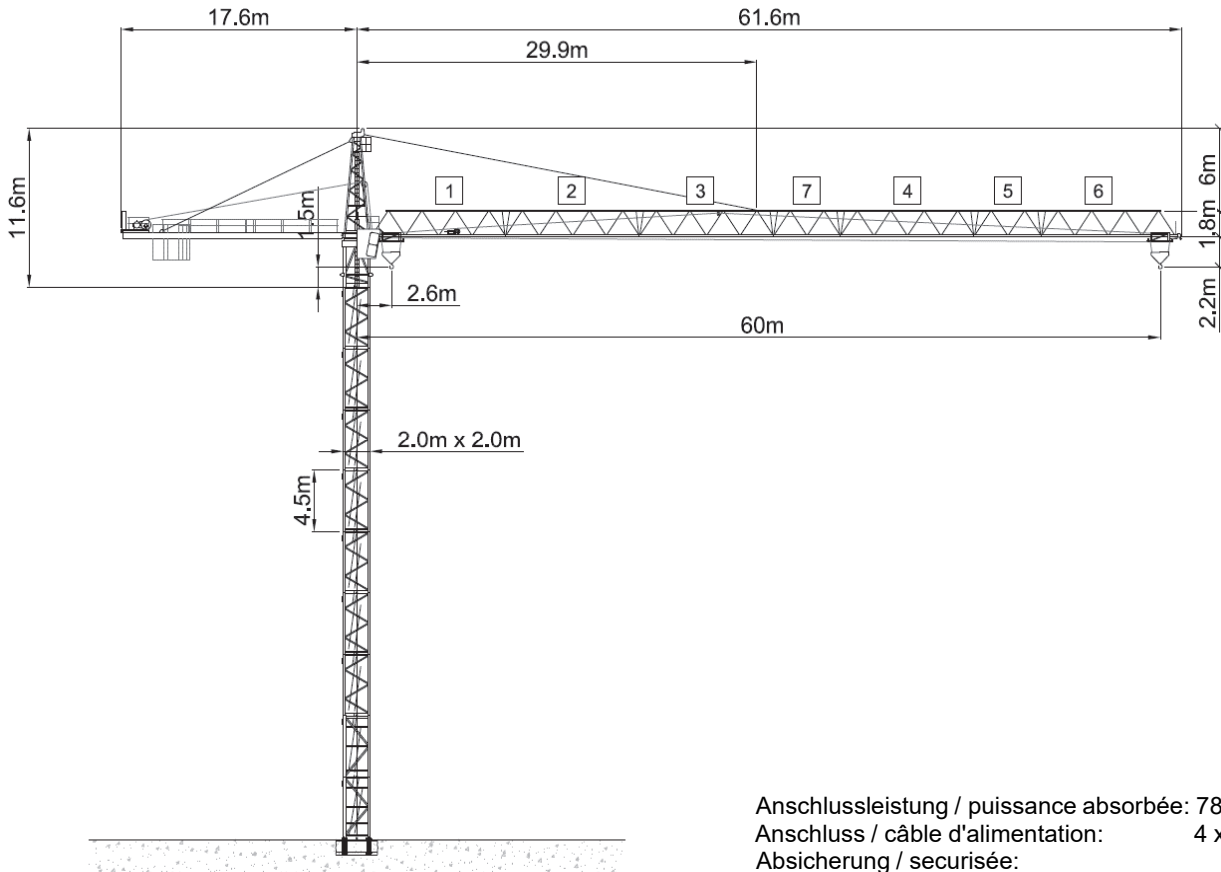






# Wolff WK 192 FL



Anschlussleistung / puissance absorbée: 78 kVA  
 Anschluss / câble d'alimentation: 4 x 25□  
 Absicherung / sécurisée: 80 A  
 Anlaufstrom / courant de pointe maxi: 95 A

Ausladung (m) / portée (m)			30	35	40	45	50	55	60	
Auslegerlänge (m) flèche (m)	60	2.6 - 13.27	4.67	3.83	3.21	2.73	2.34	2.02	1.76	Tragfähigkeit (t) capacité de charge (t)
	55	2.6 - 16.77	6.2	5.15	4.36	3.75	3.26	2.86		
	50	2.6 - 19.01	7.18	5.99	5.1	4.4	3.85			
	45	2.6 - 20.12	7.67	6.41	5.46	4.73				
	40	2.6 - 20.22	7.71	6.45	5.5					
	35	2.6 - 20.36	7.77	6.5						
	30	2.6 - 20.41	7.8							
 <b>12.0 to</b>										

	Motor FU (kW) 45 m/min. 1 - 100		Motor FU (kW) 7.5 m/min. 8 - 100		Motor (kW) 2 x 5.7 r.p.m 0.75
---	------------------------------------	---	-------------------------------------	---	----------------------------------



**Kaufmann Turmkrane AG**  
 Rütisbergstr. 8, CH-8156 Oberhasli / ZH  
 Tel. 043 411 08 30  
[www.turmkrane.ch](http://www.turmkrane.ch) / [info@krankaufmann.ch](mailto:info@krankaufmann.ch)