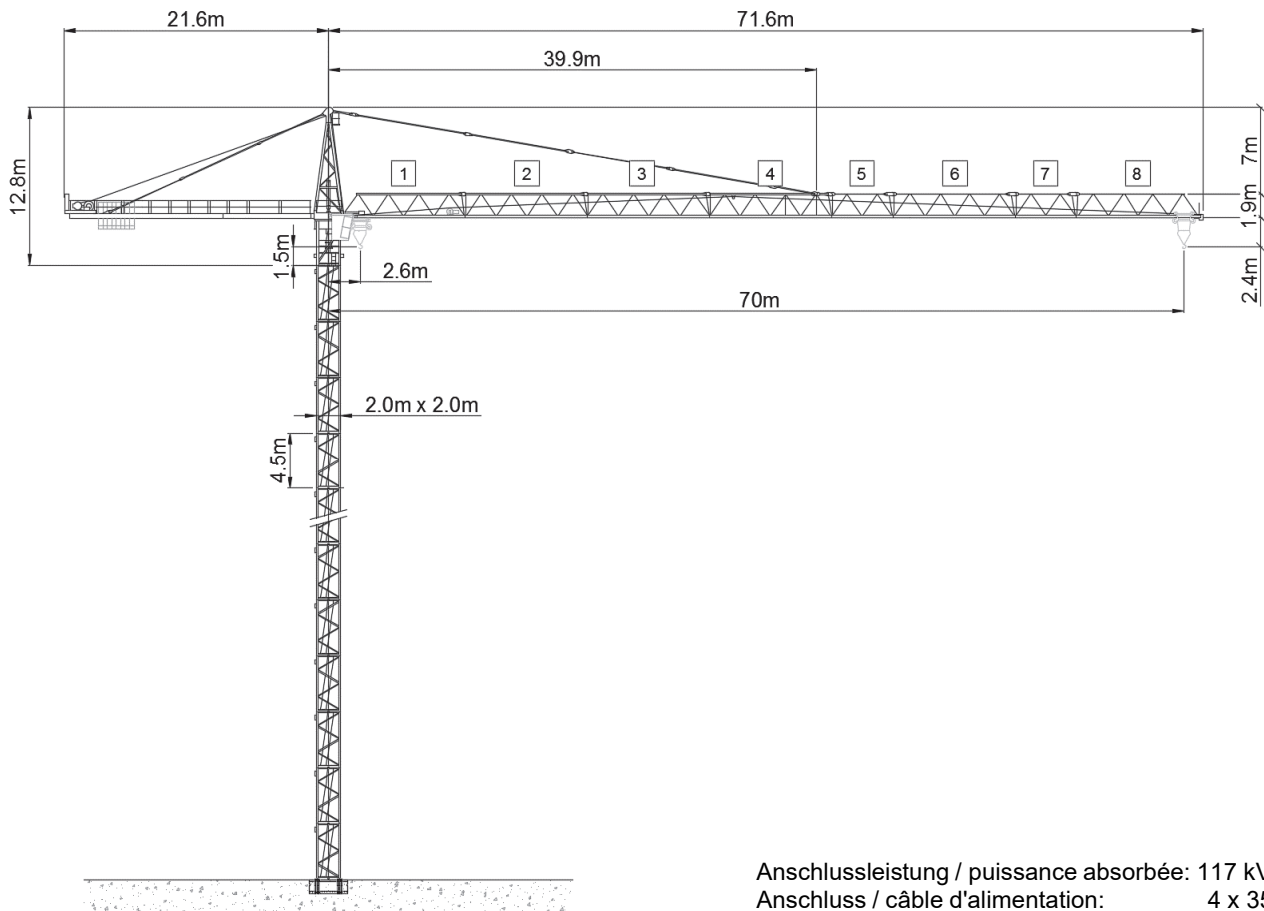






Wolff WK 262 FL



Anschlussleistung / puissance absorbée: 117 kVA
 Anschluss / câble d'alimentation: 4 x 35□
 Absicherung / sécurisée: 125 A
 Anlaufstrom / courant de pointe maxi: 157 A

Ausladung (m) / portée (m)			30	35	40	45	50	55	60	65	70		
Auslegerlänge (m) flèche (m)	70	2.6 - 21.6	 12.0 to	8.35	7.0	5.98	5.2	4.57	4.05	3.62	3.3	3.0	Tragfähigkeit (t) capacité de charge (t)
	65	2.6 - 22.8		8.86	7.44	6.37	5.54	4.88	4.36	3.88	3.5		
	60	2.6 - 23.5		9.2	7.72	6.62	5.76	5.08	4.51	4.05			
	55	2.6 - 24.9		9.8	8.25	7.08	6.17	5.44	4.85				
	50	2.6 - 25.9		10.2	8.61	7.4	6.46	5.7					
	45	2.6 - 27.1		10.75	9.05	7.78	6.8						
	40	2.6 - 27.4		10.9	9.18	7.9							
	35	2.6 - 27.7		11.0	9.3								
30	2.6 - 29.5	11.5											

 Motor FU (kW) 75 m/min. 2.8 - 140	 Motor FU (kW) 7.5 m/min. 8 - 100	 Motor (kW) 2 x 6.3 r.p.m 0.7
--	---	---



Kaufmann Turmkrane AG
 Rütisbergstr. 8, CH-8156 Oberhasli / ZH
 Tel. 043 411 08 30
www.turmkrane.ch / info@krankaufmann.ch