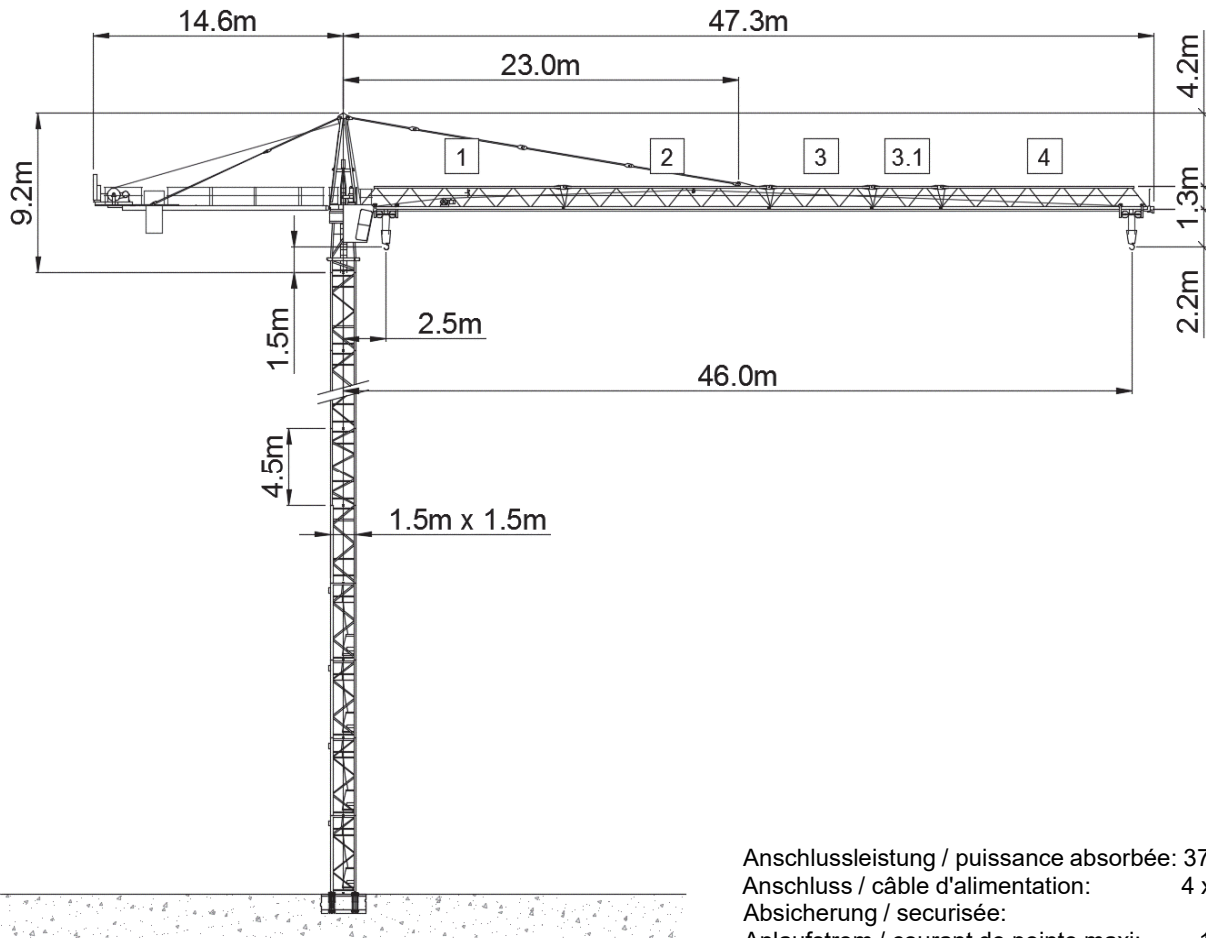







# Wolff WK 4615 SL



Anschlussleistung / puissance absorbée: 37 kVA  
 Anschluss / câble d'alimentation: 4 x 16□  
 Absicherung / sécurisée: 63 A  
 Anlaufstrom / courant de pointe maxi: 116 A

Ausladung (m) / portée (m)			20	24	30	36	42	46		
Auslegerlänge (m) flèche (m)	46	2.5 - 14.2	 6.0 to	4.1	3.3	2.6	2.1	1.7	1.5	Tragfähigkeit (t) capacité de charge (t)
	42	2.5 - 14.9		4.3	3.5	2.7	2.2	1.8		
	36	2.5 - 15.5		4.5	3.7	2.9	2.3			
	30	2.5 - 16.2		4.7	3.9	3.0				
	24	2.5 - 16.6		4.9	4.0					

Ausladung (m) / portée (m)			20	24	30	36	42	46		
Auslegerlänge (m) flèche (m)	46	2.5 - 26.3	 3.0 to	3.0	3.0	2.6	2.1	1.7	1.5	Tragfähigkeit (t) capacité de charge (t)
	42	2.5 - 27.6		3.0	3.0	2.7	2.2	1.8		
	36	2.5 - 28.8		3.0	3.0	2.9	2.3			
	30	2.5 - 30.0		3.0	3.0	3.0				
	24	2.5 - 24.0		3.0	3.0					

 Motor (kW) m/min.	22	 Motor (kW) m/min.	2.4	 Motor (kW) r.p.m	4
	0 - 105		0 - 40		0.85