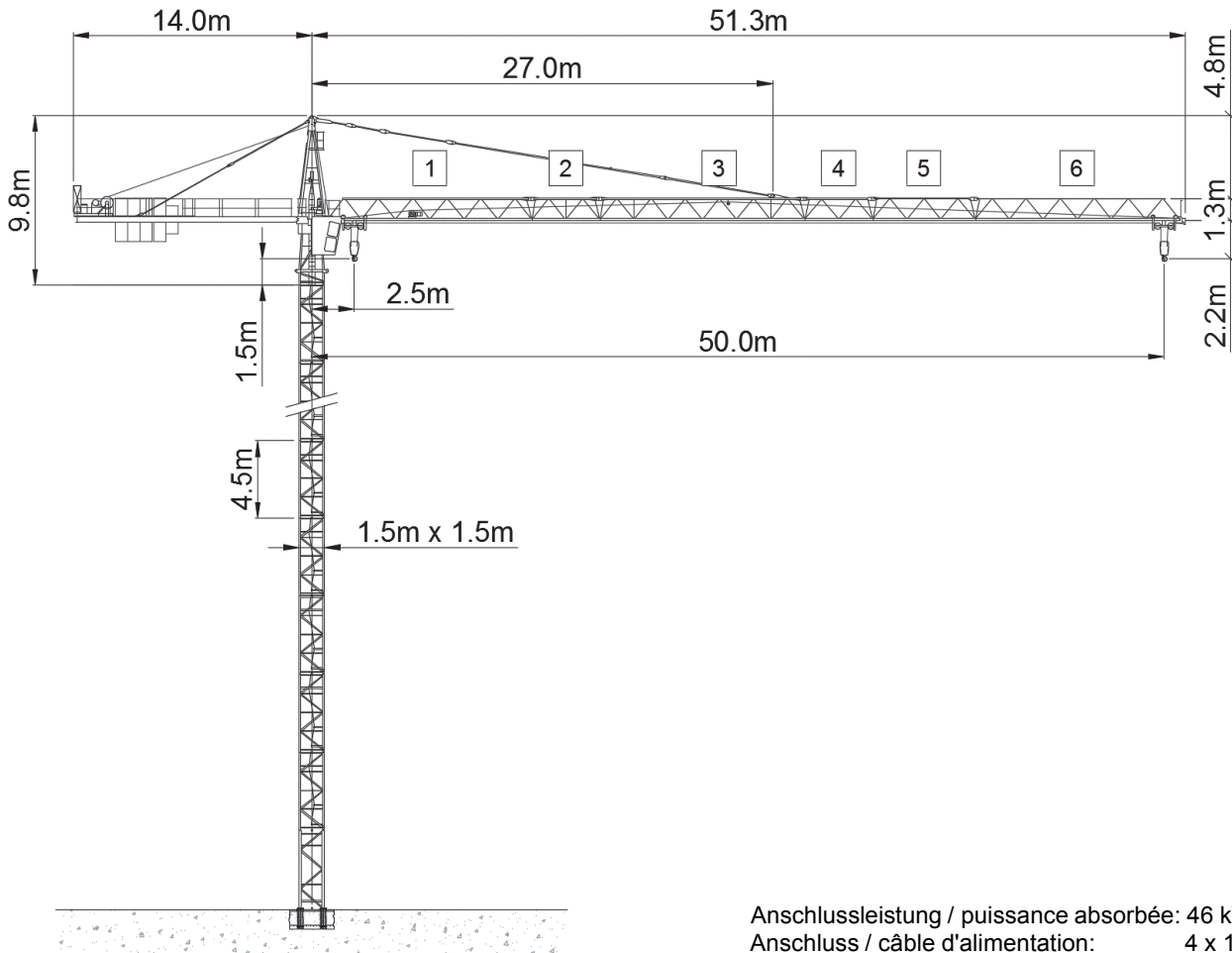






Wolff WK 5015 FL CCplus



Anschlussleistung / puissance absorbée: 46 kVA
 Anschluss / câble d'alimentation: 4 x 16□
 Absicherung / sécurisée: 63 A
 Anlaufstrom / courant de pointe maxi: 59 A

Ausladung (m) / portée (m)			20	25	30	36	42	46	50		
Auslegerlänge (m) flèche (m)	50	2.5 - 18.3	 6.0 to	5.5	4.3	3.4	2.8	2.3	2.0	1.8	Tragfähigkeit (t) capacité de charge (t)
	46	2.5 - 18.7		5.6	4.4	3.5	2.8	2.3	2.1		
	42	2.5 - 19.4		5.8	4.5	3.7	3.0	2.4			
	36	2.5 - 19.7		5.9	4.6	3.7	3.0				
	30	2.5 - 20.7		6.0	4.9	4.0					

 Motor FU (kW) 28 m/min. 0 - 90	 Motor FU (kW) 4 m/min. 8 - 80	 Motor (kW) 5 r.p.m. 0.85
---	--	---



Kaufmann Turmkrane AG
 Rütisbergstr. 8, CH-8156 Oberhasli / ZH
 Tel. 043 411 08 30
www.turmkrane.ch / info@krankaufmann.ch