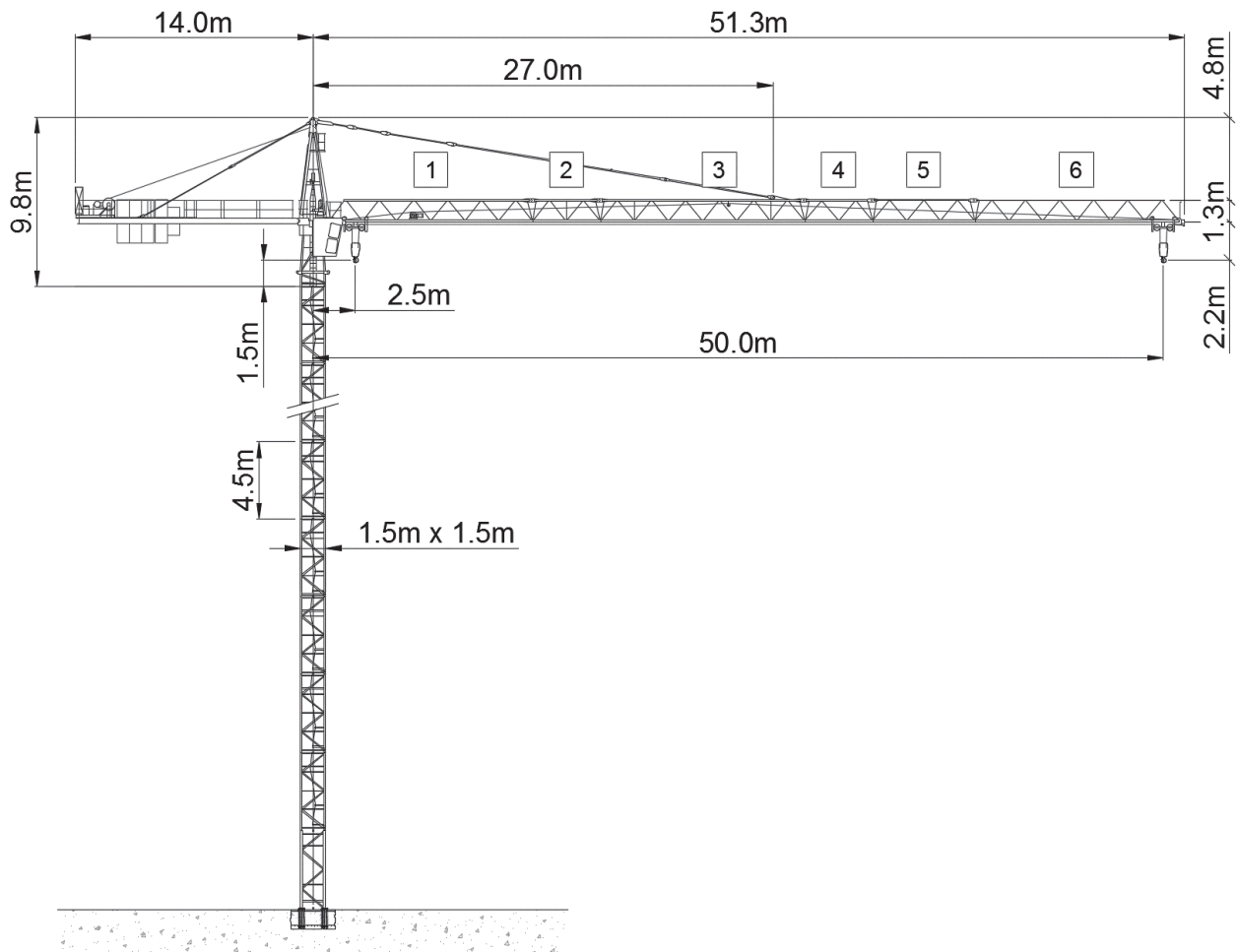






Wolff WK 5015 FL



Anschlussleistung / puissance absorbée: 44 kVA
 Anschluss / câble d'alimentation: 4 x 16□
 Absicherung / sécurisée: 63 A
 Anlaufstrom / courant de pointe maxi: 97 A

Ausladung (m) / portée (m)			20	25	30	36	42	46	50	
Auslegerlänge (m) flèche (m)	50	2.5 - 17.0	4.9	3.8	3.0	2.4	1.9	1.7	1.5	Tragfähigkeit (t) capacité de charge (t)
	46	2.5 - 17.4	5.1	3.9	3.1	2.4	2.0	1.8		
	42	2.5 - 18.1	5.3	4.1	3.3	2.6	2.1			
	36	2.5 - 18.5	5.5	4.2	3.3	2.7				
	30	2.5 - 19.6	5.8	4.5	3.6					
			 6.0 to							

 Motor FU (kW) 28 m/min. 0 - 90	 Motor FU (kW) 4 m/min. 8 - 80	 Motor (kW) 5 r.p.m. 0.85
---	--	---