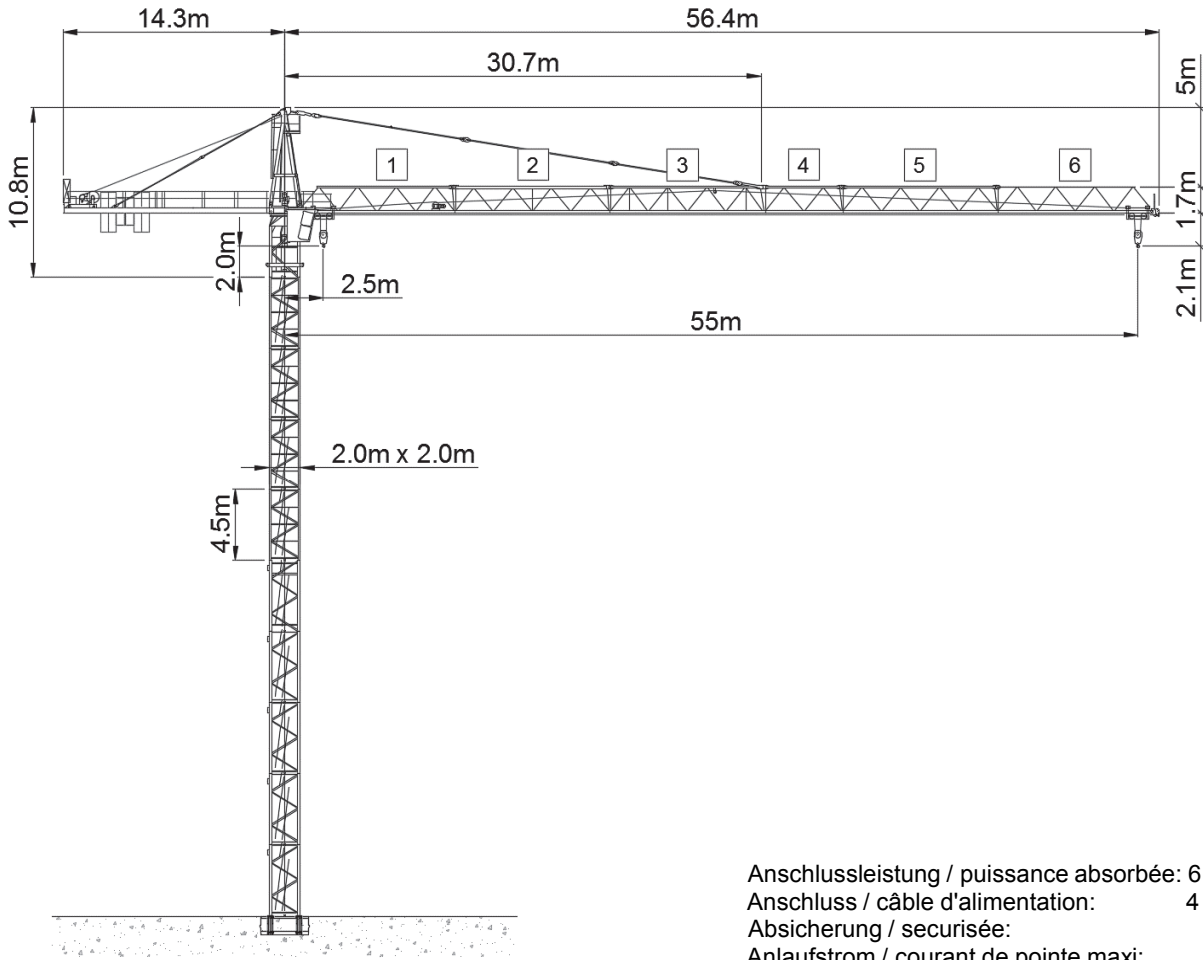






Wolff WK 5520 FL 6 CCplus (37 kW)



Anschlussleistung / puissance absorbée: 61 kVA
 Anschluss / câble d'alimentation: 4 x 16□
 Absicherung / sécurisée: 63 A
 Anlaufstrom / courant de pointe maxi: 78 A

Ausladung (m) / portée (m)			25	30	35	40	45	50	55		
Auslegerlänge (m) flèche (m)	55	2.5 - 25.3	 6.0 to	6.0	4.9	4.1	3.5	3.0	2.7	2.4	Tragfähigkeit (t) capacité de charge (t)
	50	2.5 - 26.5		6.0	5.2	4.4	3.7	3.2	2.8		
	45	2.5 - 26.6		6.0	5.2	4.4	3.7	3.2			
	40	2.5 - 26.7		6.0	5.3	4.4	3.8				
	35	2.5 - 26.8		6.0	5.3	4.4					
	30	2.5 - 27.6		6.0	5.4						

 Motor FU (kW) 37 m/min. 0 - 140	 Motor FU (kW) 4 m/min. 8 - 80	 Motor (kW) 7.5 r.p.m 0.8
--	--	---



Kaufmann Turmkrane AG
 Rütisbergstr. 8, CH-8156 Oberhasli / ZH
 Tel. 043 411 08 30
www.turmkrane.ch / info@krankaufmann.ch