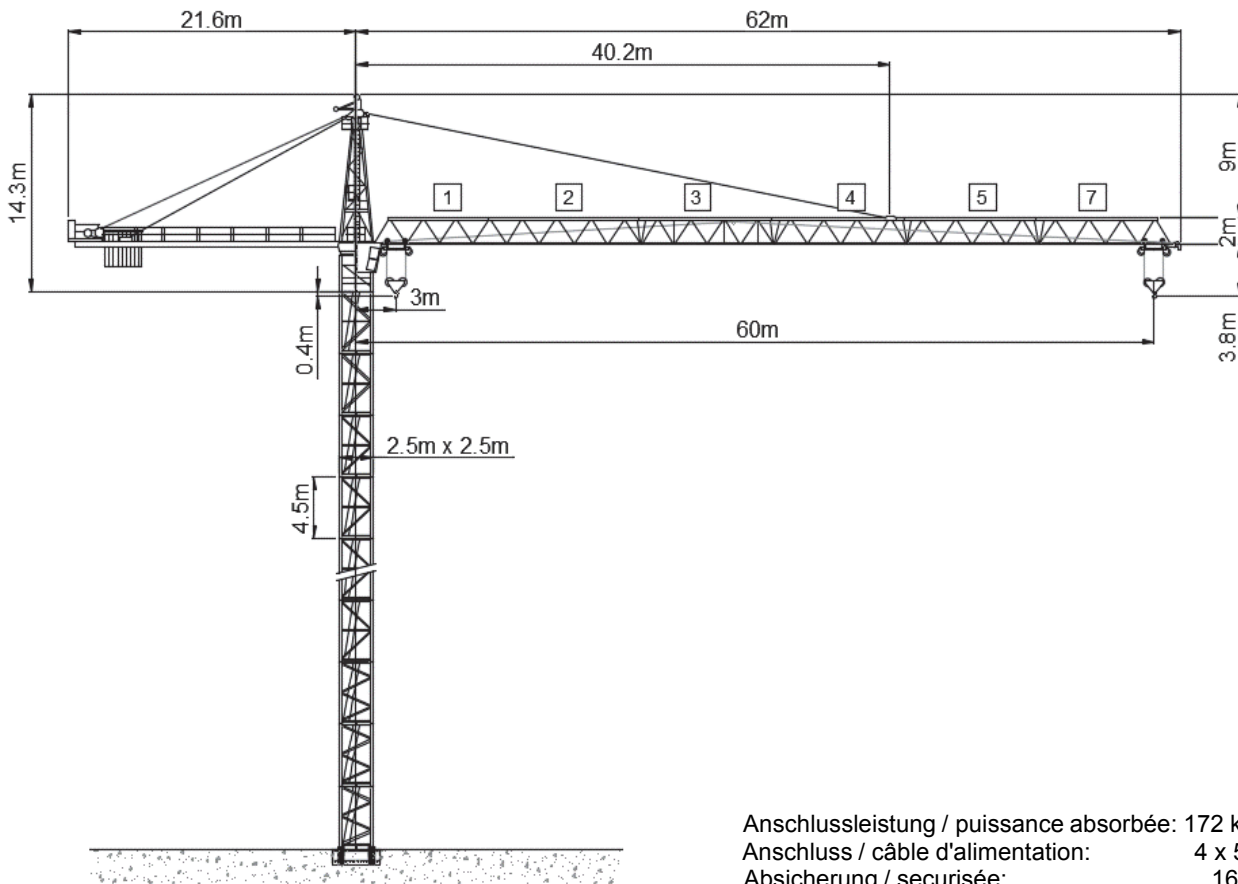






Wolff WK 600 FL 40



Anschlussleistung / puissance absorbée: 172 kVA
 Anschluss / câble d'alimentation: 4 x 50□
 Absicherung / sécurisée: 160 A
 Anlaufstrom / courant de pointe maxi: 230 A

Ausladung (m) / portée (m)			30	35	40	45	50	55	60		
Auslegerlänge (m) flèche (m)	60	3.0 - 12.0	 40.0 to	14.6	12.1	10.3	8.8	7.6	6.7	5.9	Tragfähigkeit (t) capacité de charge (t)
	55	3.0 - 12.4		15.2	12.6	10.6	9.2	8.0	7.0		
	50	3.0 - 14.6		18.5	15.4	13.1	11.4	10.0			
	45	3.0 - 14.9		18.9	15.8	13.5	11.7				
	40	3.0 - 15.7		20.3	17.0	14.5					
	35	3.0 - 15.9		20.4	17.05						
	30	3.0 - 16.0		20.5							

	Motor FU (kW) 110 m/min. 1 - 65		Motor FU (kW) 9.2 m/min. 8 - 75		Motor (kW) 3 x 6.3 r.p.m 0.65
---	------------------------------------	---	------------------------------------	---	----------------------------------



Kaufmann Turmkrane AG
 Rütisbergstr. 8, CH-8156 Oberhasli / ZH
 Tel. 043 411 08 30
www.turmkrane.ch / info@krankaufmann.ch