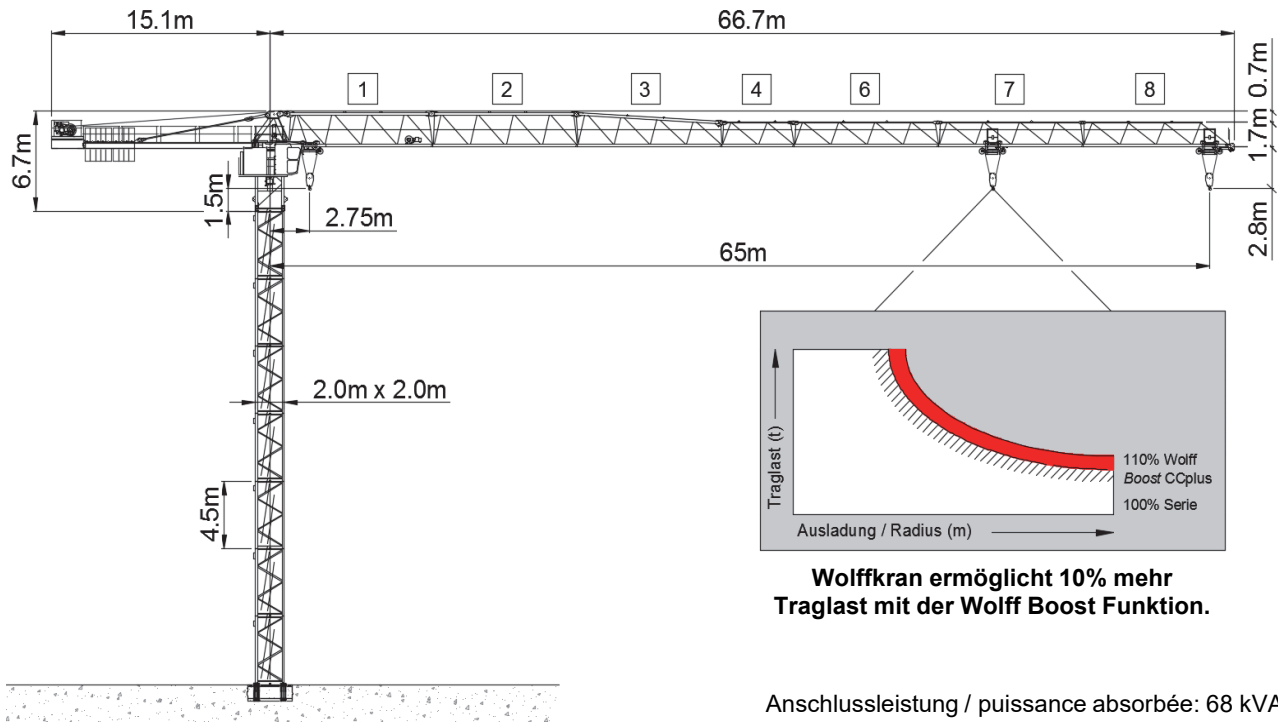


Wolff WK 6031.8 clear



Anschlussleistung / puissance absorbée: 68 kVA
 Anschluss / câble d'alimentation: 4 x 35□
 Absicherung / securisée: 100 A
 Anlaufstrom / courant de pointe maxi: 158 A

Ausladung (m) / portée (m)		25	30	32.5	35	37.5	40	42.5	45	47.5	50	52.5	55	57.5	60	62.5	65		
Auslegerlänge (m) / flèche (m)	65	2.75 - 21.7	7.3	5.9	5.4	5.0	4.6	4.2	3.9	3.7	3.4	3.2	3.0	2.9	2.7	2.6	2.4	2.3	Tragfähigkeit (t) / capacité de charge (t)
	62.5	2.75 - 23.5	8.0	6.5	5.9	5.5	5.0	4.7	4.3	4.1	3.8	3.6	3.4	3.2	3.0	2.8	2.7		
	60	2.75 - 25.2	8.5	7.0	6.4	5.9	5.4	5.1	4.7	4.4	4.1	3.9	3.7	3.5	3.3	3.1			
	57.5	2.75 - 26.0	8.5	7.3	6.6	6.1	5.6	5.2	4.9	4.6	4.3	4.0	3.8	3.6	3.4				
	55	2.75 - 26.6	8.5	7.5	6.8	6.3	5.8	5.4	5.0	4.7	4.4	4.2	3.9	3.7					
	52.5	2.75 - 27.1	8.5	7.6	7.0	6.4	5.9	5.5	5.1	4.8	4.5	4.2	4.0						
	50	2.75 - 28.0	8.5	7.9	7.2	6.6	6.1	5.7	5.3	5.0	4.7	4.4							
	47.5	2.75 - 28.6	8.5	8.1	7.4	6.8	6.3	5.9	5.5	5.1	4.8								
	45	2.75 - 29.0	8.5	8.2	7.5	6.9	6.4	6.0	5.6	5.2									
	42.5	2.75 - 29.7	8.5	8.4	7.7	7.1	6.6	6.1	5.7										
	40	2.75 - 30.1	8.5	8.5	7.8	7.2	6.7	6.2											
	37.5	2.75 - 30.2	8.5	8.5	7.9	7.2	6.7												
	35	2.75 - 30.5	8.5	8.5	7.9	7.3													
	32.5	2.75 - 30.4	8.5	8.5	7.9														
30	2.75 - 30.0	8.5	8.5																

Motor FU (kW) 45 m/min. 0 - 115	Motor FU (kW) 7.5 m/min. 8 - 100	Motor FU (kW) 2 x 6 r.p.m 0.8
------------------------------------	-------------------------------------	----------------------------------



Kaufmann Turmkrane AG
 Rütisbergstr. 8, CH-8156 Oberhasli / ZH
 Tel. 043 411 08 30
www.turmkrane.ch / info@krankaufmann.ch