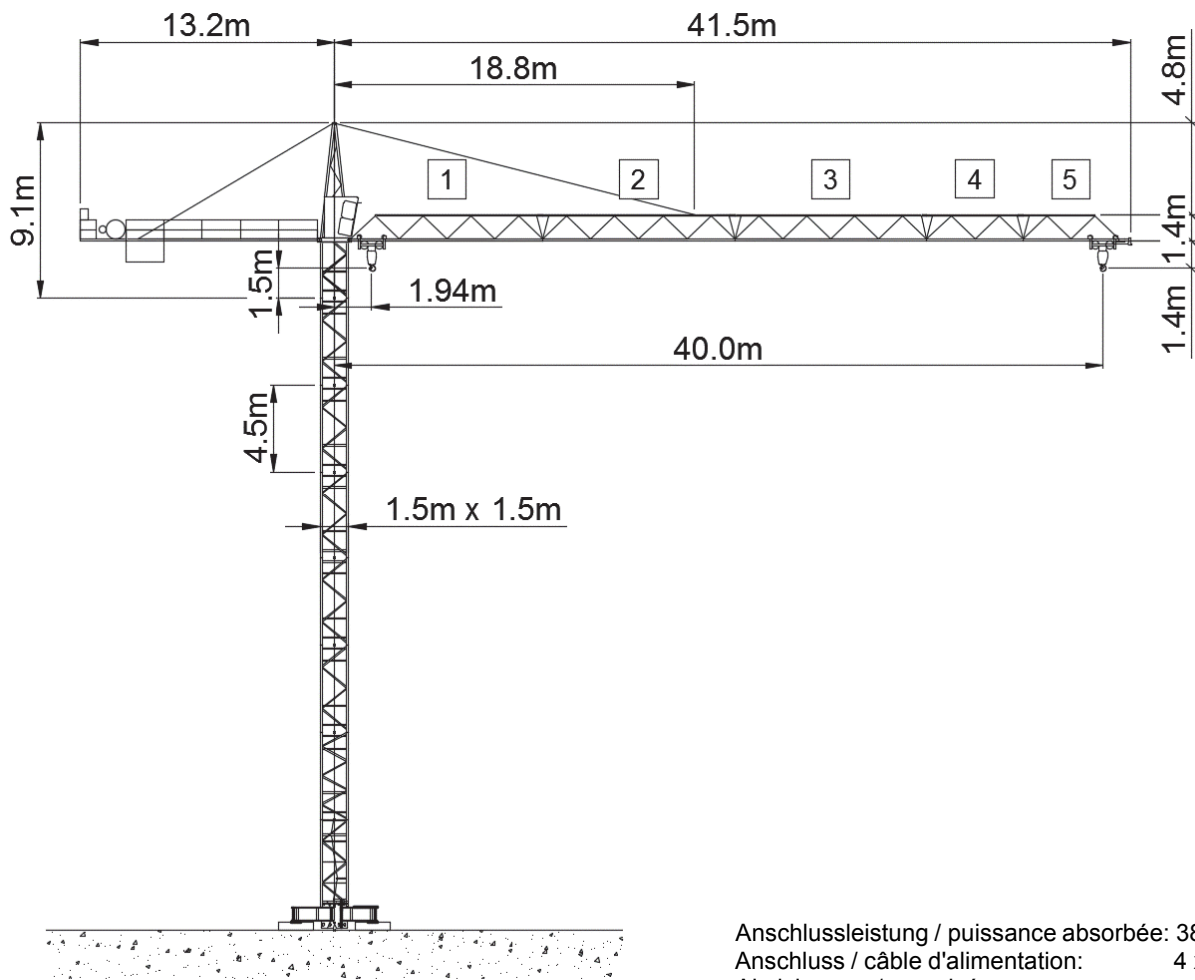






Wolff WK 62 FL



Anschlussleistung / puissance absorbée: 38 kVA
 Anschluss / câble d'alimentation: 4 x 10□
 Absicherung / sécurisée: 40 A
 Anlaufstrom / courant de pointe maxi: 46 A

Ausladung (m) / portée (m)			20	25	30	35	40		
Auslegerlänge (m) flèche (m)	40	1.94 - 16.5	 4.0 to	3.25	2.5	2.0	1.7	1.45	Tragfähigkeit (t) capacité de charge (t)
	35	1.94 - 16.85		3.3	2.55	2.1	1.75		
	30	1.94 - 17.5		3.45	2.7	2.2			
	25	1.94 - 17.7		3.5	2.75				
	20	1.94 - 18.0		3.55					

 Motor FU (kW) 22 m/min. 5 - 65	 Motor FU (kW) 4 m/min. 8 - 80	 Motor (kW) 4 r.p.m. 0.95
---	--	---



Kaufmann Turmkrane AG
 Rütisbergstr. 8, CH-8156 Oberhasli / ZH
 Tel. 043 411 08 30
www.turmkrane.ch / info@krankaufmann.ch