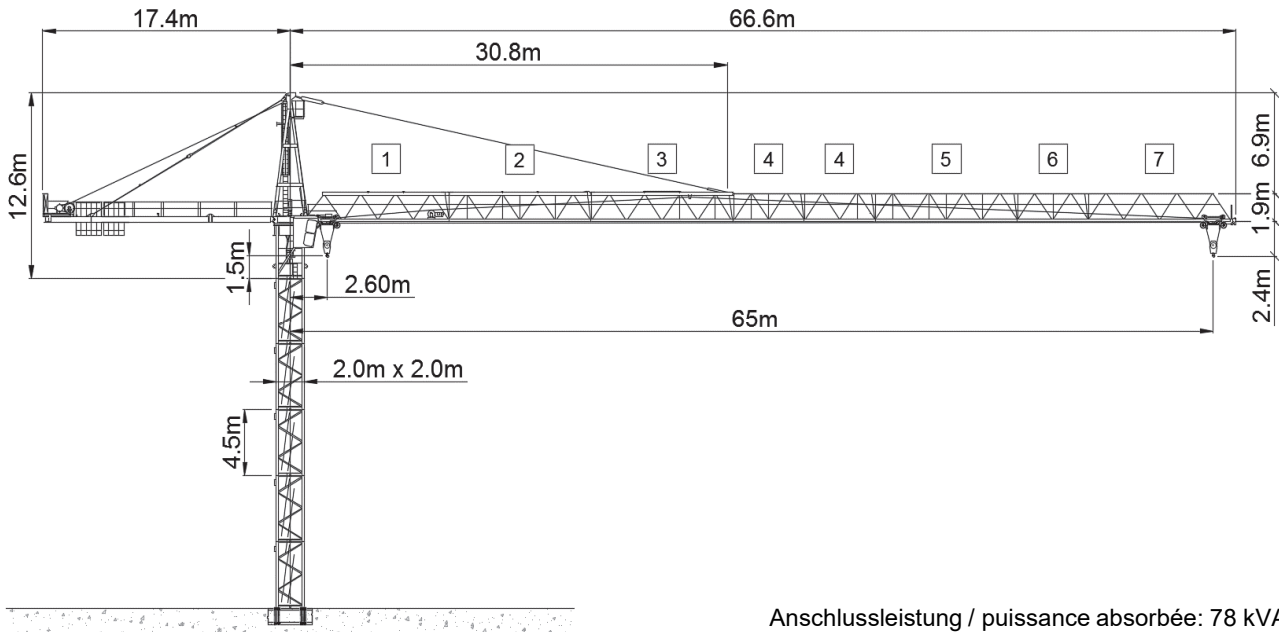


Wolff WK 6522 FL 6/12 CCplus (45 kW)



Anschlussleistung / puissance absorbée: 78 kVA
 Anschluss / câble d'alimentation: 4 x 25□
 Absicherung / sécurisée: 80 A
 Anlaufstrom / courant de pointe maxi: 95 A

Ausladung (m) / portée (m)		25	30	35	40	45	50	55	60	65			
Auslegerlänge (m) flèche (m)	65	2.6 - 16.1	12.0 to	7.3	5.9	4.9	4.1	3.5	3.1	2.7	2.4	2.1	Tragfähigkeit (t) capacité de charge (t)
	60	2.6 - 17.4		8.0	6.5	5.4	4.6	3.9	3.4	3.0	2.7		
	55	2.6 - 18.7		8.7	7.0	5.9	5.0	4.3	3.8	3.3			
	50	2.6 - 20.1		9.4	7.6	6.4	5.4	4.7	4.1				
	45	2.6 - 21.1		10.0	8.1	6.8	5.8	5.0					
	40	2.6 - 22.1		10.5	8.5	7.1	6.1						
	35	2.6 - 22.6		10.7	8.7	7.3							
	30	2.6 - 23.1		11.0	9.0								

Ausladung (m) / portée (m)		25	30	35	40	45	50	55	60	65			
Auslegerlänge (m) flèche (m)	65	2.6 - 31.2	6.0 to	6.0	6.0	5.2	4.4	3.8	3.3	2.9	2.6	2.3	Tragfähigkeit (t) capacité de charge (t)
	60	2.6 - 33.0		6.0	6.0	5.6	4.8	4.1	3.6	3.2	2.8		
	55	2.6 - 35.5		6.0	6.0	6.0	5.2	4.5	3.9	3.5			
	50	2.6 - 38.0		6.0	6.0	6.0	5.6	4.9	4.3				
	45	2.6 - 41.6		6.0	6.0	6.0	6.0	5.5					
	40	2.6 - 40.0		6.0	6.0	6.0	6.0						
	35	2.6 - 35.0		6.0	6.0	6.0							
	30	2.6 - 30.0		6.0	6.0								

Motor FU (kW) 45 m/min. 0 - 140	Motor FU (kW) 7.5 m/min. 8 - 100	Motor FU (kW) 2 x 5 r.p.m 0.75
------------------------------------	-------------------------------------	-----------------------------------



Kaufmann Turmkrane AG
 Rütisbergstr. 8, CH-8156 Oberhasli / ZH
 Tel. 043 411 08 30
www.turmkrane.ch / info@krankaufmann.ch