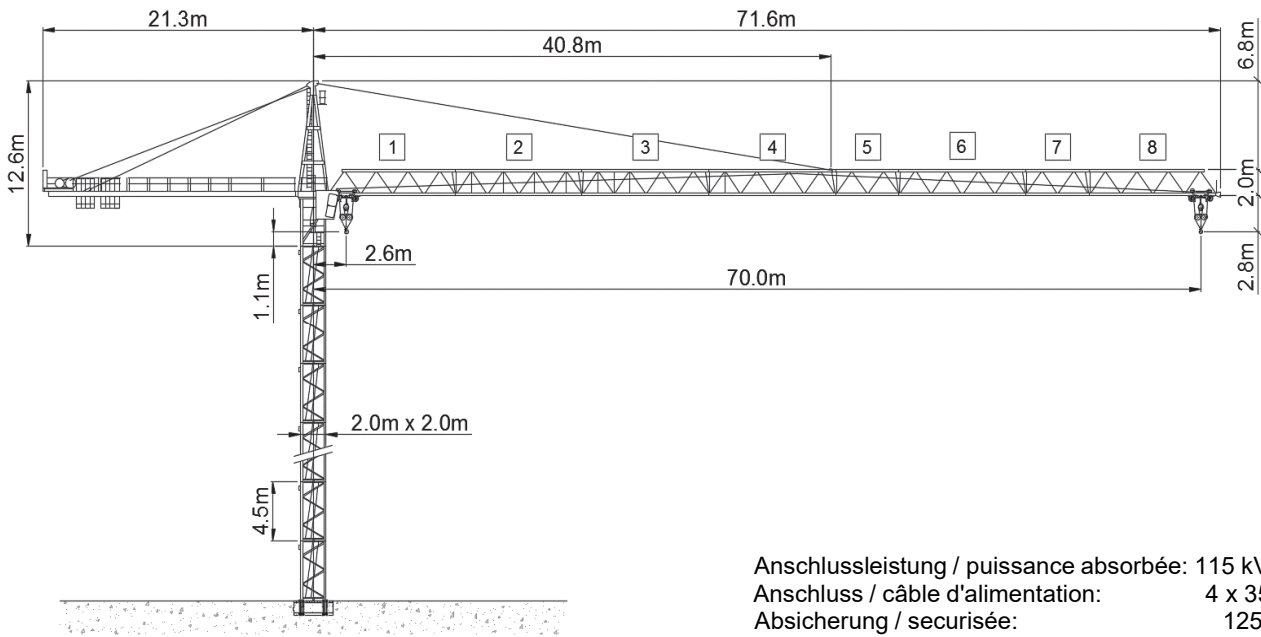


Wolff WK 7031 FL 6/12 CCplus (75 kW)



Anschlussleistung / puissance absorbée: 115 kVA
 Anschluss / câble d'alimentation: 4 x 35□
 Absicherung / sécurisée: 125 A
 Anlaufstrom / courant de pointe maxi: 157 A

Ausladung (m) / portée (m)		25	30	35	40	45	50	55	60	65	70	Tragfähigkeit (t) capacité de charge (t)
Auslegerlänge (m) flèche (m)	70	2.6 - 23.3	11.1	9.1	7.6	6.5	5.7	5.0	4.4	4.0	3.6	
	65	2.6 - 24.6	11.8	9.6	8.1	6.9	6.0	5.3	4.7	4.2	3.8	
	60	2.6 - 25.4	12.0	10.0	8.4	7.2	6.3	5.5	4.9	4.4		
	55	2.6 - 25.8	12.0	10.2	8.5	7.3	6.4	5.6	5.0			
	50	2.6 - 26.9	12.0	10.6	9.0	7.7	6.7	5.9				
	45	2.6 - 27.4	12.0	10.9	9.1	7.9	6.9					
	40	2.6 - 27.7	12.0	11.0	9.3	8.0						
	35	2.6 - 28.0	12.0	11.1	9.4							
	30	2.6 - 28.5	12.0	11.3								

Ausladung (m) / portée (m)		25	30	35	40	45	50	55	60	65	70	Tragfähigkeit (t) capacité de charge (t)
Auslegerlänge (m) flèche (m)	70	2.6 - 43.7	6.0	6.0	6.0	6.0	5.8	5.1	4.6	4.1	3.7	
	65	2.6 - 46.0	6.0	6.0	6.0	6.0	6.0	5.4	4.9	4.4	3.9	
	60	2.6 - 47.5	6.0	6.0	6.0	6.0	6.0	5.7	5.0	4.5		
	55	2.6 - 48.3	6.0	6.0	6.0	6.0	6.0	5.8	5.1			
	50	2.6 - 50.0	6.0	6.0	6.0	6.0	6.0	6.0				
	45	2.6 - 45.0	6.0	6.0	6.0	6.0	6.0					
	40	2.6 - 40.0	6.0	6.0	6.0	6.0						
	35	2.6 - 35.0	6.0	6.0	6.0							
	30	2.6 - 30.0	6.0	6.0								

Motor FU (kW) 75 m/min. 0 - 220	Motor FU (kW) 7.5 m/min. 8 - 100	Motor FU (kW) 2 x 5 r.p.m 0.75
------------------------------------	-------------------------------------	-----------------------------------



Kaufmann Turmkrane AG
 Rütisbergstr. 8, CH-8156 Oberhasli / ZH
 Tel. 043 411 08 30
www.turmkrane.ch / info@krankaufmann.ch