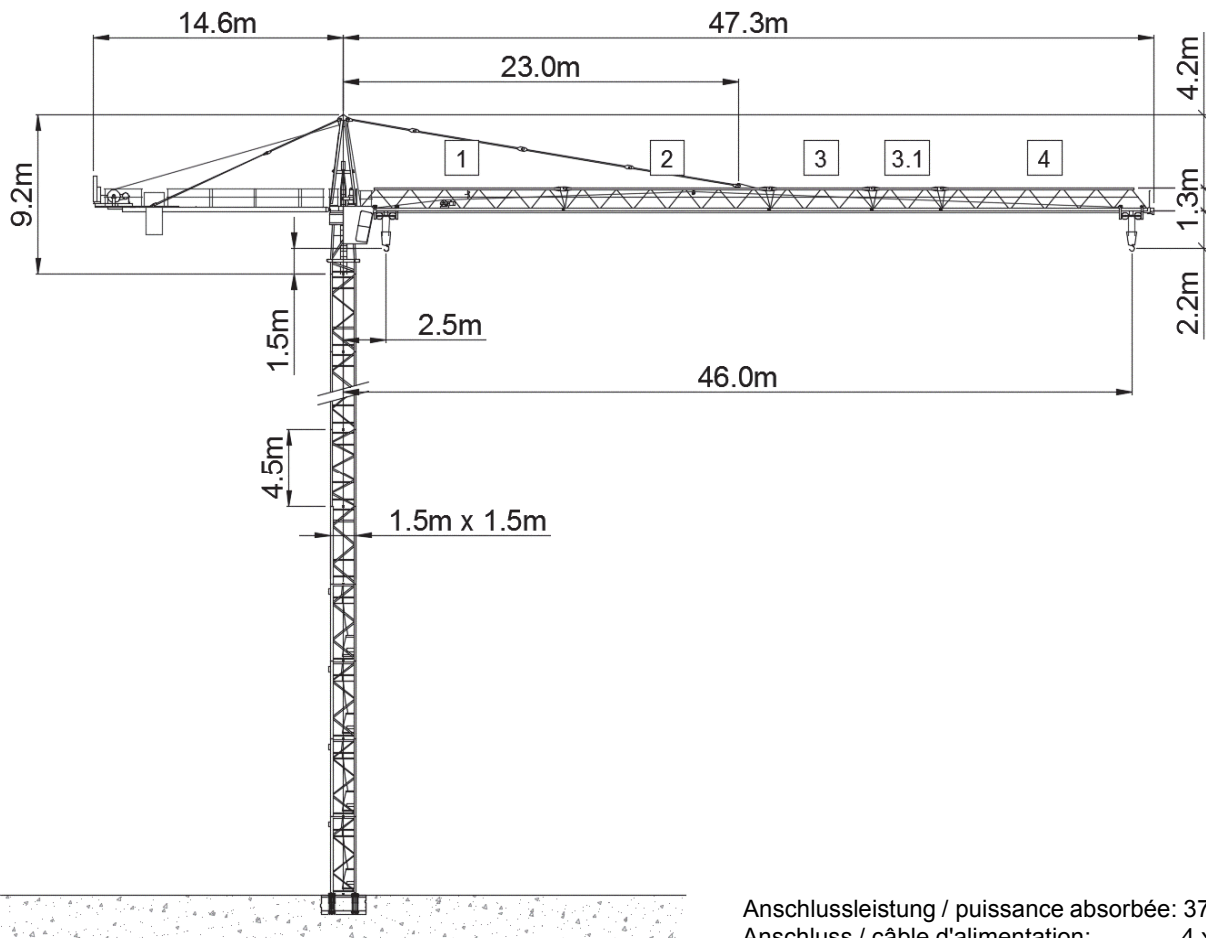






Wolff WK 71 FL



Anschlussleistung / puissance absorbée: 37 kVA
 Anschluss / câble d'alimentation: 4 x 10□
 Absicherung / sécurisée: 40 A
 Anlaufstrom / courant de pointe maxi: 46 A

Ausladung (m) / portée (m)			20	24	26	30	36	42	46		
Auslegerlänge (m) flèche (m)	46	2.5 - 11.5	 6.0 to	3.25	2.6	2.4	2.0	1.6	1.28	1.13	Tragfähigkeit (t) capacité de charge (t)
	42	2.5 - 13.2		3.8	3.0	2.8	2.37	1.9	1.55		
	36	2.5 - 14.8		4.3	3.5	3.2	2.7	2.17			
	30	2.5 - 15.2		4.45	3.6	3.3	2.8				
	24	2.5 - 15.3		4.5	3.65						

 Motor FU (kW) 22 m/min. 1.6 - 100	 Motor FU (kW) 4 m/min. 8 - 80	 Motor (kW) 4 r.p.m 0.85
--	--	--



Kaufmann Turmkrane AG
 Rütisbergstr. 8, CH-8156 Oberhasli / ZH
 Tel. 043 411 08 30
www.turmkrane.ch / info@krankaufmann.ch