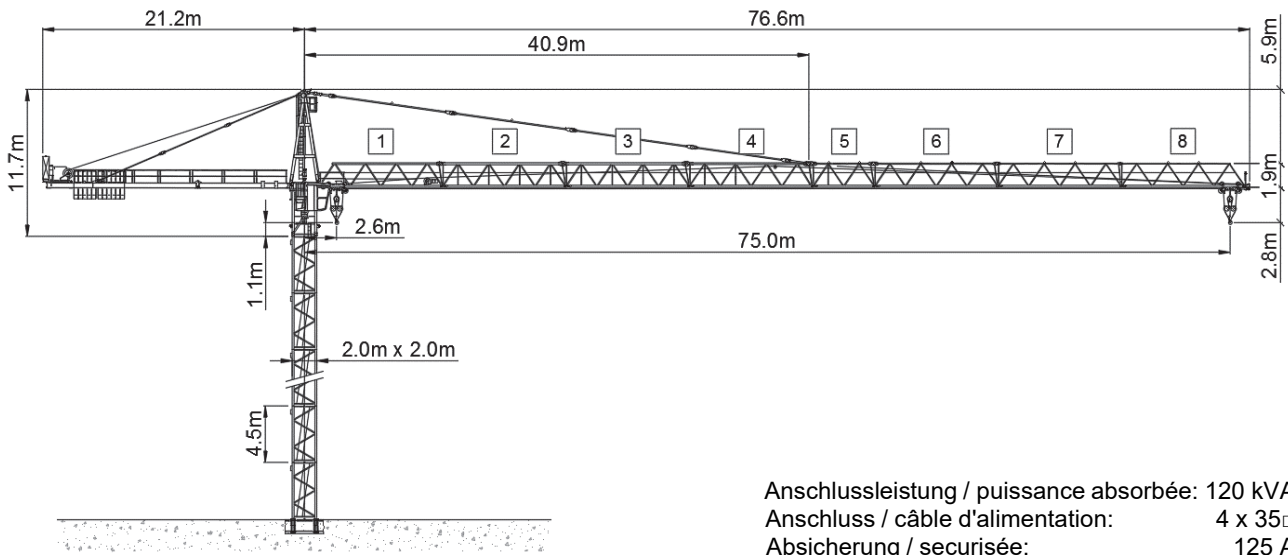





Wolff WK 7532.16 cross



Anschlussleistung / puissance absorbée: 120 kVA
 Anschluss / câble d'alimentation: 4 x 35□
 Absicherung / sécurisée: 125 A
 Anlaufstrom / courant de pointe maxi: 157 A

Ausladung (m) / portée (m)			25	30	35	40	45	50	55	60	65	70	75	Tragfähigkeit (t) / capacité de charge (t)
Auslegerlänge (m) / flèche (m)	75	2.6 - 19.2	12.4	10.1	8.5	7.2	6.3	5.5	4.9	4.4	3.9	3.5	3.2	
	70	2.6 - 20.7	13.4	11.0	9.2	7.9	6.8	6.0	5.3	4.8	4.3	3.9		
	65	2.6 - 21.8	14.2	11.6	9.7	8.3	7.3	6.4	5.7	5.1	4.6			
	60	2.6 - 22.1	14.4	11.8	9.9	8.5	7.4	6.5	5.8	5.2				
	55	2.6 - 22.7	14.9	12.2	10.2	8.8	7.6	6.7	6.0					
	50	2.6 - 23.2	15.2	12.4	10.5	9.0	7.8	6.9						
	45	2.6 - 23.6	15.5	12.7	10.7	9.2	8.0							
	40	2.6 - 23.7	15.6	12.7	10.7	9.2								
	35	2.6 - 24.2	16.0	13.1	11.0									
	30	2.6 - 24.6	16.2	13.3										

Ausladung (m) / portée (m)			25	30	35	40	45	50	55	60	65	70	75	Tragfähigkeit (t) / capacité de charge (t)
Auslegerlänge (m) / flèche (m)	75	2.6 - 35.9	8.3	8.3	8.3	7.3	6.4	5.6	5.0	4.5	4.0	3.6	3.3	
	70	2.6 - 38.6	8.3	8.3	8.3	8.0	6.9	6.1	5.4	4.9	4.4	4.0		
	65	2.6 - 40.6	8.3	8.3	8.3	8.3	7.4	6.5	5.8	5.2	4.7			
	60	2.6 - 41.2	8.3	8.3	8.3	8.3	7.5	6.6	5.9	5.3				
	55	2.6 - 42.4	8.3	8.3	8.3	8.3	7.7	6.8	6.1					
	50	2.6 - 43.2	8.3	8.3	8.3	8.3	7.9	7.0						
	45	2.6 - 44.1	8.3	8.3	8.3	8.3	8.1							
	40	2.6 - 40.0	8.3	8.3	8.3	8.3								
	35	2.6 - 35.0	8.3	8.3	8.3									
	30	2.6 - 30.0	8.3	8.3										

 Motor FU (kW) 75 m/min. 0 - 170	 Motor FU (kW) 9 m/min. 8 - 100	 Motor FU (kW) 2 x 6 r.p.m. 0.75
--	---	--



Kaufmann Turmkrane AG
 Rütisbergstr. 8, CH-8156 Oberhasli / ZH
 Tel. 043 411 08 30
www.turmkrane.ch / info@krankaufmann.ch