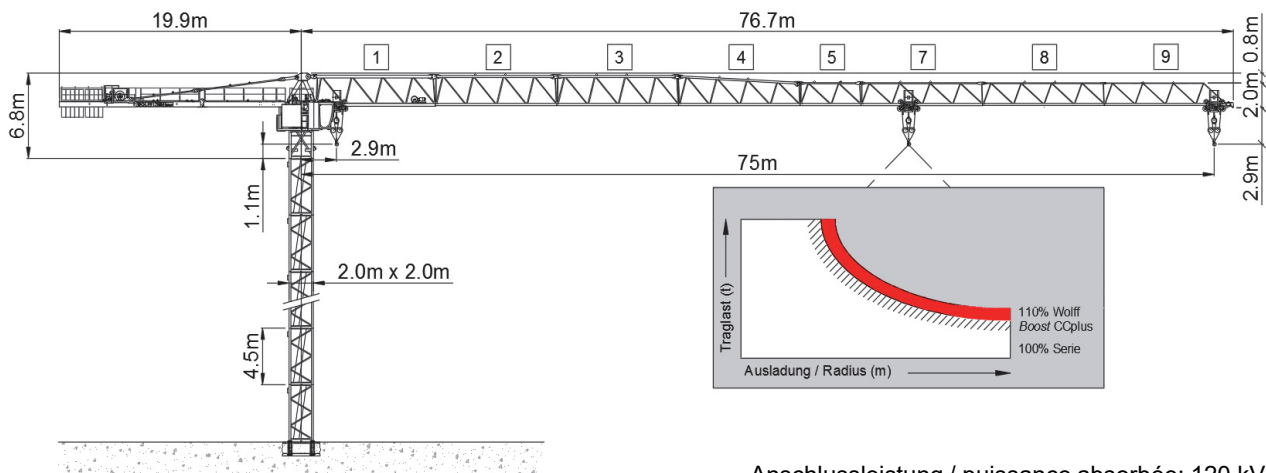


Wolff WK 7534.16 clear



Wolffkran ermöglicht 10% mehr Traglast mit der Wolff Boost Funktion.

Anschlussleistung / puissance absorbée: 120 kVA
 Anschluss / câble d'alimentation: 4 x 35□
 Absicherung / sécurisée: 120 A
 Anlaufstrom / courant de pointe maxi: 157 A

Ausladung (m) / portée (m)		20	25	30	35	40	45	50	55	60	65	70	75	
Auslegerlänge (m) / flèche (m)	75	2.9 - 17.9	14.6	11.4	9.3	7.8	6.6	5.8	5.0	4.5	4.0	3.6	3.2	Tragfähigkeit (t) / capacité de charge (t)
	70	2.9 - 19.5	16.0	12.6	10.2	8.6	7.3	6.4	5.6	5.0	4.4	4.0	3.6	
	65	2.9 - 20.6	16.5	13.4	10.9	9.2	7.8	6.8	6.0	5.3	4.8	4.3		
	60	2.9 - 21.1	16.5	13.7	11.2	9.4	8.0	7.0	6.2	5.5	4.9			
	55	2.9 - 21.8	16.5	14.2	11.6	9.7	8.4	7.3	6.4	5.7				
	50	2.9 - 22.3	16.5	14.6	11.9	10.0	8.6	7.5	6.6					
	45	2.9 - 22.8	16.5	15.0	12.2	10.3	8.8	7.7						
	40	2.9 - 23.0	16.5	15.1	12.3	10.4	8.9							
	35	2.9 - 23.6	16.5	15.5	12.7	10.7								
	30	2.9 - 24.1	16.5	15.9	13.0									

Ausladung (m) / portée (m)		20	25	30	35	40	45	50	55	60	65	70	75	
Auslegerlänge (m) / flèche (m)	75	2.9 - 33.5	8.3	8.3	8.3	7.9	7.6	5.9	5.1	4.6	4.1	3.7	3.3	Tragfähigkeit (t) / capacité de charge (t)
	70	2.9 - 36.4	8.3	8.3	8.3	8.3	7.4	6.5	5.7	5.1	4.5	4.1	3.7	
	65	2.9 - 38.5	8.3	8.3	8.3	8.3	7.9	6.9	6.1	5.4	4.9	4.4		
	60	2.9 - 39.3	8.3	8.3	8.3	8.3	8.1	7.1	6.3	5.6	5.0			
	55	2.9 - 40.6	8.3	8.3	8.3	8.3	8.3	7.4	6.5	5.8				
	50	2.9 - 41.6	8.3	8.3	8.3	8.3	8.3	7.6	6.7					
	45	2.9 - 42.6	8.3	8.3	8.3	8.3	8.3	7.8						
	40	2.9 - 40.0	8.3	8.3	8.3	8.3	8.3							
	35	2.9 - 35.0	8.3	8.3	8.3	8.3								
	30	2.9 - 30.0	8.3	8.3	8.3									

Motor FU (kW) 75 m/min. 0 - 185	Motor FU (kW) 9 m/min. 8 - 100	Motor FU (kW) 2 x 6 r.p.m 0.8
------------------------------------	-----------------------------------	----------------------------------



Kaufmann Turmkrane AG
 Rütisbergstr. 8, CH-8156 Oberhasli / ZH
 Tel. 043 411 08 30
www.turmkrane.ch / info@krankaufmann.ch