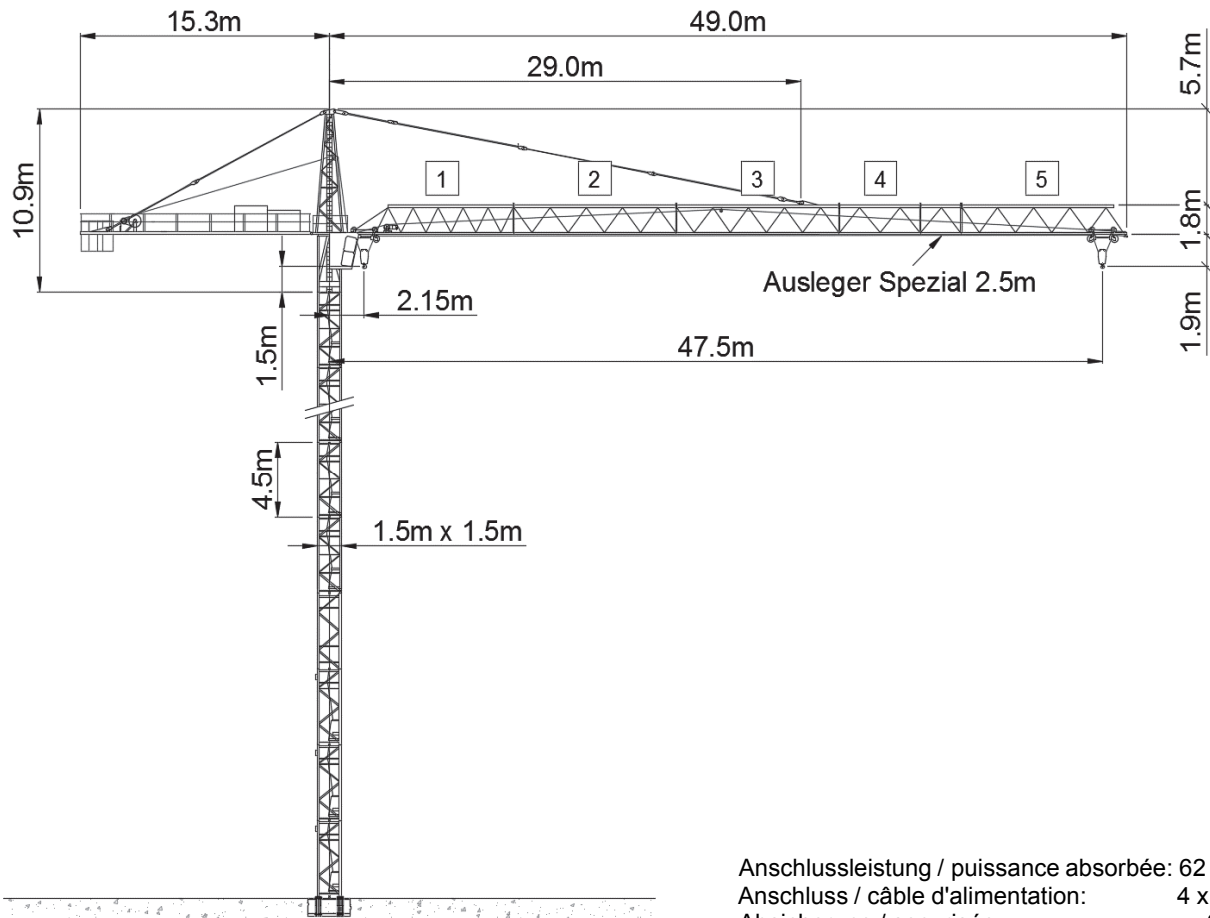






Wolff WK 90 FL 0 / 1 (37 kW)



Anschlussleistung / puissance absorbée: 62 kVA
 Anschluss / câble d'alimentation: 4 x 16□
 Absicherung / sécurisée: 63 A
 Anlaufstrom / courant de pointe maxi: 78 A

Ausladung (m) / portée (m)			20	25	30	35	40	42.5	45	47.5		
Auslegerlänge (m) flèche (m)	47.5	2.15 - 16.5	 6.0 to	4.6	3.6	2.9	2.4	2.0	1.9	1.75	1.65	Tragfähigkeit (t) capacité de charge (t)
	45	2.15 - 18.7		5.5	4.3	3.5	3.0	2.5	2.35	2.2		
	42.5	2.15 - 18.7		5.5	4.3	3.5	3.0	2.5	2.35			
	40	2.15 - 19.0		5.7	4.4	3.6	3.1	2.6				
	35	2.15 - 19.0		5.7	4.4	3.6	3.1					
	30	2.15 - 19.4		5.8	4.5	3.7						

 Motor FU (kW) 37 m/min. 1 - 80	 Motor FU (kW) 4 m/min. 8 - 80	 Motor (kW) 2 x 4 r.p.m 0.85
---	--	--



Kaufmann Turmkrane AG
 Rütisbergstr. 8, CH-8156 Oberhasli / ZH
 Tel. 043 411 08 30
www.turmkrane.ch / info@krankaufmann.ch