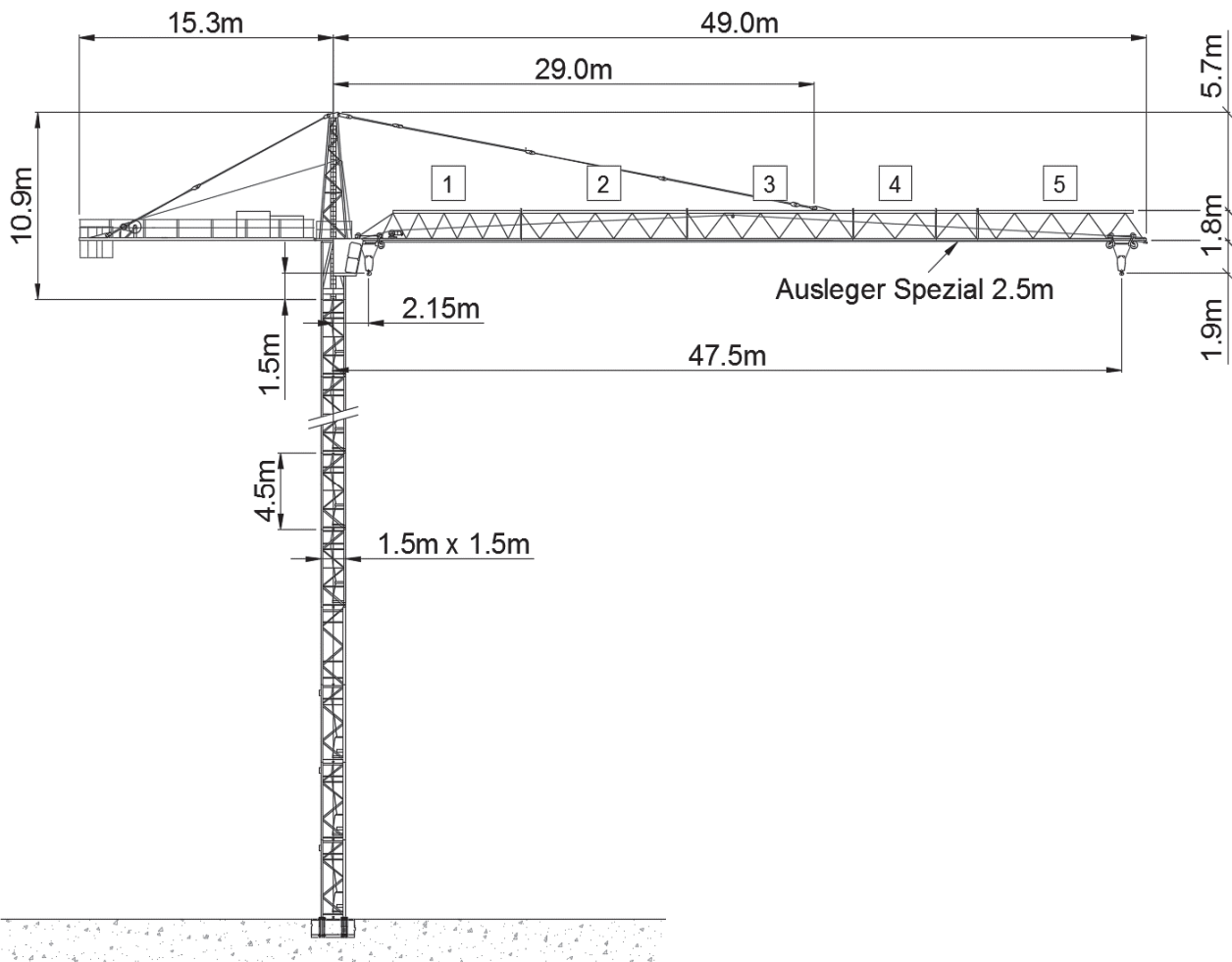






# Wolff WK 90 SL



Anschlussleistung / puissance absorbée: 61 kVA / 72 kVA  
 Anschluss / câble d'alimentation: 4 x 35□  
 Absicherung / sécurisée: 100 A  
 Anlaufstrom / courant de pointe maxi: 196 A / 234 A

Ausladung (m) / portée (m)			20	25	30	35	40	45		
Auslegerlänge (m) flèche (m)	45	2.15 - 17.3		5.12	4.0	3.25	2.71	2.31	2.0	Tragfähigkeit (t) capacité de charge (t)
	40	2.15 - 17.3		5.1	3.98	3.23	2.7	2.3		
	30	2.15 - 17.3		6.0 to	5.12	4.0	3.25			

	Motor (kW)	37 / 45 kW		Motor (kW)	5.5		Motor (kW)	2 x 4
	m/min (37 kW)	22/58/110		m/min	1 - 50		r.p.m	0.85
	m/min (45 kW)	27/72/132						