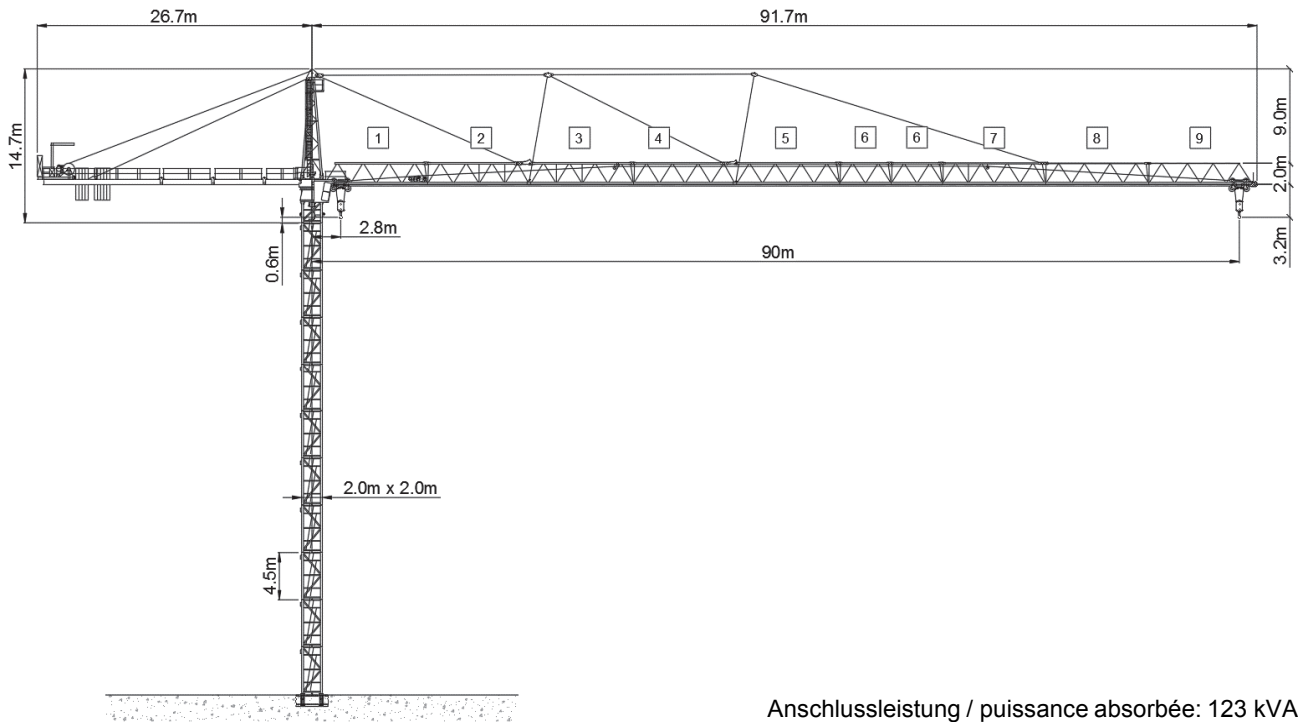


Wolff WK 9025 CCplus



Anschlussleistung / puissance absorbée: 123 kVA
 Anschluss / câble d'alimentation: 4 x 35□
 Absicherung / sécurisée: 125 A
 Anlaufstrom / courant de pointe maxi: 157 A

Ausladung (m) / portée (m)			30	35	40	45	50	55	60	65	70	75	80	85	90	
Auslegerlänge (m) flèche (m)	90	2.8 - 19.3	12.3	10.3	8.8	7.6	6.7	6.0	5.3	4.8	4.3	3.9	3.6	3.3	3.0	Tragfähigkeit (t) capacité de charge (t)
	85	2.8 - 20.0	12.8	10.7	9.2	8.0	7.0	6.2	5.6	5.0	4.5	4.1	3.8	3.5		
	80	2.8 - 20.9	13.4	11.3	9.6	8.4	7.4	6.6	5.9	5.3	4.8	4.4	4.0			
	75	2.8 - 21.4	13.8	11.6	9.9	8.6	7.6	6.8	6.1	5.5	5.0	4.5				
	70	2.8 - 21.9	14.1	11.9	10.2	8.9	7.8	7.0	6.3	5.6	5.1					
	65	2.8 - 22.5	14.6	12.2	10.5	9.2	8.1	7.2	6.5	5.8						
	60	2.8 - 22.9	14.9	12.5	10.8	9.4	8.3	7.4	6.6							
	55	2.8 - 23.4	15.3	12.9	11.0	9.6	8.5	7.6								
	50	2.8 - 23.7	15.5	13.0	11.2	9.8	8.6									
	45	2.8 - 24.4	16.0	13.5	11.6	10.1										
	40	2.8 - 24.9	16.4	13.8	11.9											
	35	2.8 - 25.6	16.9	14.2												
	30	2.8 - 26.2	17.3													

Motor FU (kW) 75 m/min. 0 - 125	Motor FU (kW) 9 m/min. 8 - 92	Motor (kW) 2 x 7.5 r.p.m 0.75
------------------------------------	----------------------------------	----------------------------------



Kaufmann Turmkrane AG
 Rütisbergstr. 8, CH-8156 Oberhasli / ZH
 Tel. 043 411 08 30
www.turmkrane.ch / info@rankaufmann.ch