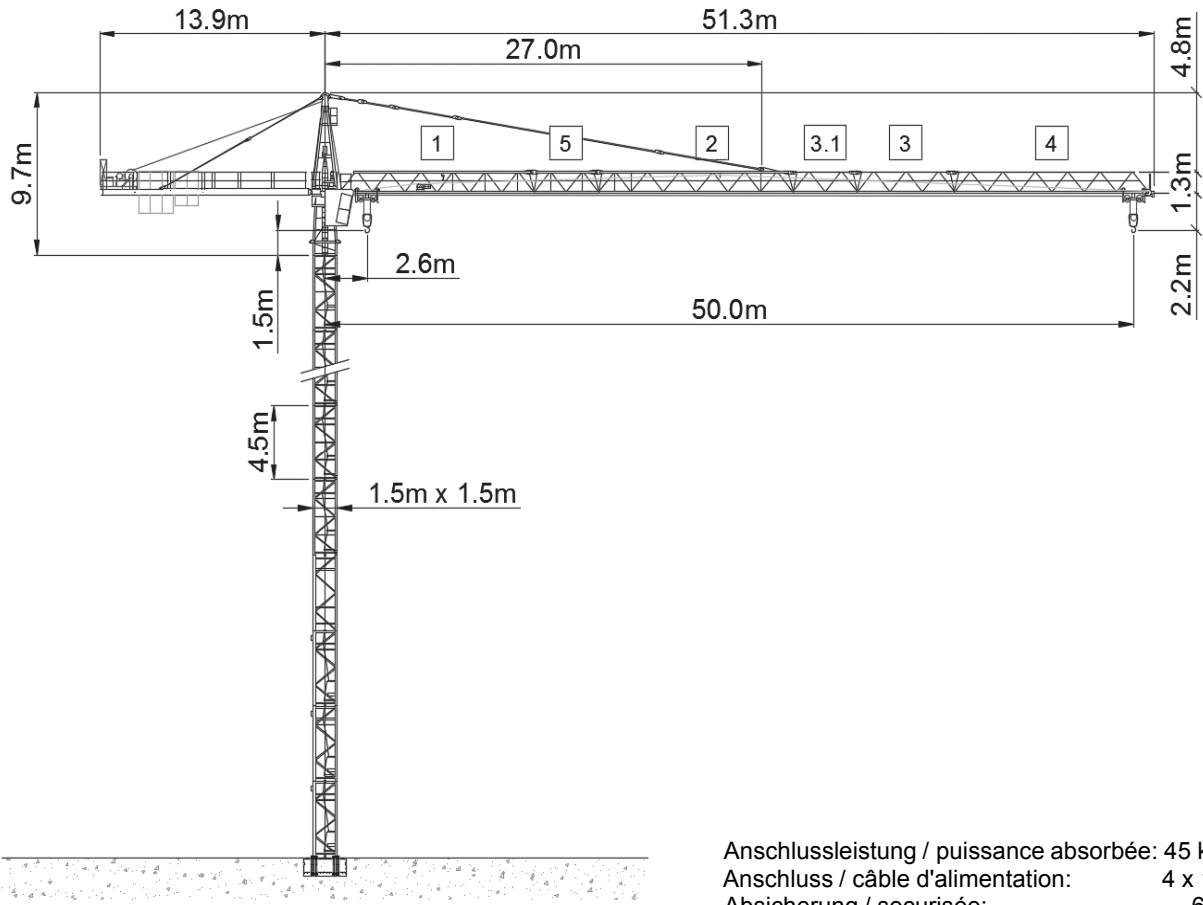






# Wolff WK 91 FL



Anschlussleistung / puissance absorbée: 45 kVA  
 Anschluss / câble d'alimentation: 4 x 16□  
 Absicherung / sécurisée: 63 A  
 Anlaufstrom / courant de pointe maxi: 59 A

Ausladung (m) / portée (m)			30	36	42	46	50		
Auslegerlänge (m) flèche (m)	50	2.6 - 17.2	 6.0 to	3.2	2.6	2.15	1.9	1.7	Tragfähigkeit (t) capacité de charge (t)
	46	2.6 - 17.2		3.2	2.6	2.15	1.9		
	42	2.6 - 18.2		3.4	2.77	2.3			
	36	2.6 - 18.6		3.5	2.85				
	30	2.6 - 19.9		3.8					

 Motor FU (kW) 28 m/min. 1 - 128	 Motor FU (kW) 3.9 m/min. 8 - 80	 Motor (kW) 4 r.p.m 0.85
--	--	--



**Kaufmann Turmkrane AG**  
 Rütisbergstr. 8, CH-8156 Oberhasli / ZH  
 Tel. 043 411 08 30  
[www.turmkrane.ch](http://www.turmkrane.ch) / [info@krankaufmann.ch](mailto:info@krankaufmann.ch)