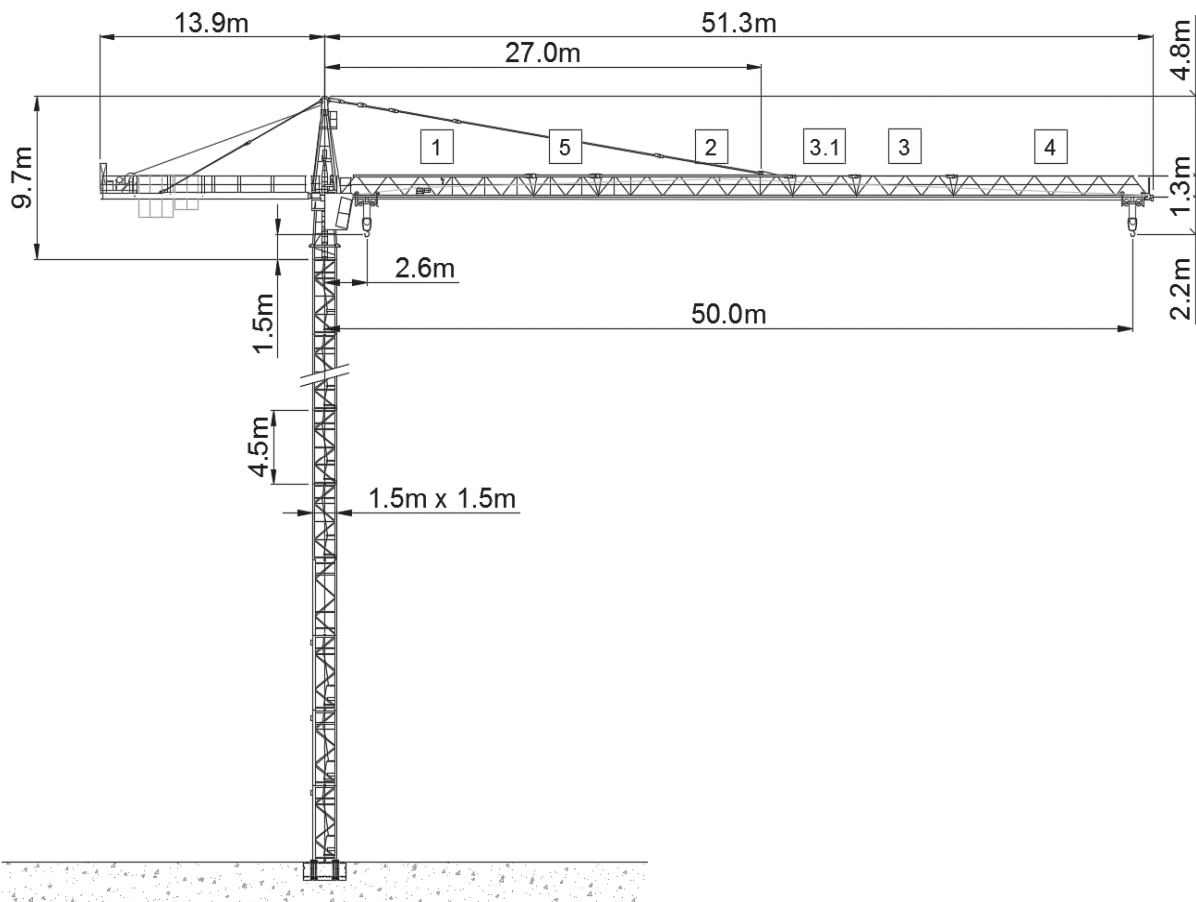






Wolff WK 91 SL



Anschlussleistung / puissance absorbée: 39 kVA / 49 kVA
 Anschluss / câble d'alimentation: 4 x 16□ / 4 x 25□
 Absicherung / sécurisée: 63A / 80 A
 Anlaufstrom / courant de pointe maxi: 123 A / 156 A

Ausladung (m) / portée (m)			30	36	42	46	50		
Auslegerlänge (m) flèche (m)	50	2.6 - 16.2	 6.0 to	2.9	2.3	1.9	1.7	1.5	Tragfähigkeit (t) capacité de charge (t)
	46	2.6 - 16.7		3.0	2.4	2.0	1.76		
	42	2.6 - 17.5		3.2	2.6	2.11			
	36	2.6 - 18.1		3.3	2.66				
	30	2.6 - 19.3		3.6					

 Motor (kW) 22 / 28 m/min. (22 kW) 17.5/32.5/52.5 m/min. (28 kW) 22/41/68	 Motor (kW) 3.9 m/min. 15/30/60	 Motor (kW) 4 r.p.m 0.85
--	---	--