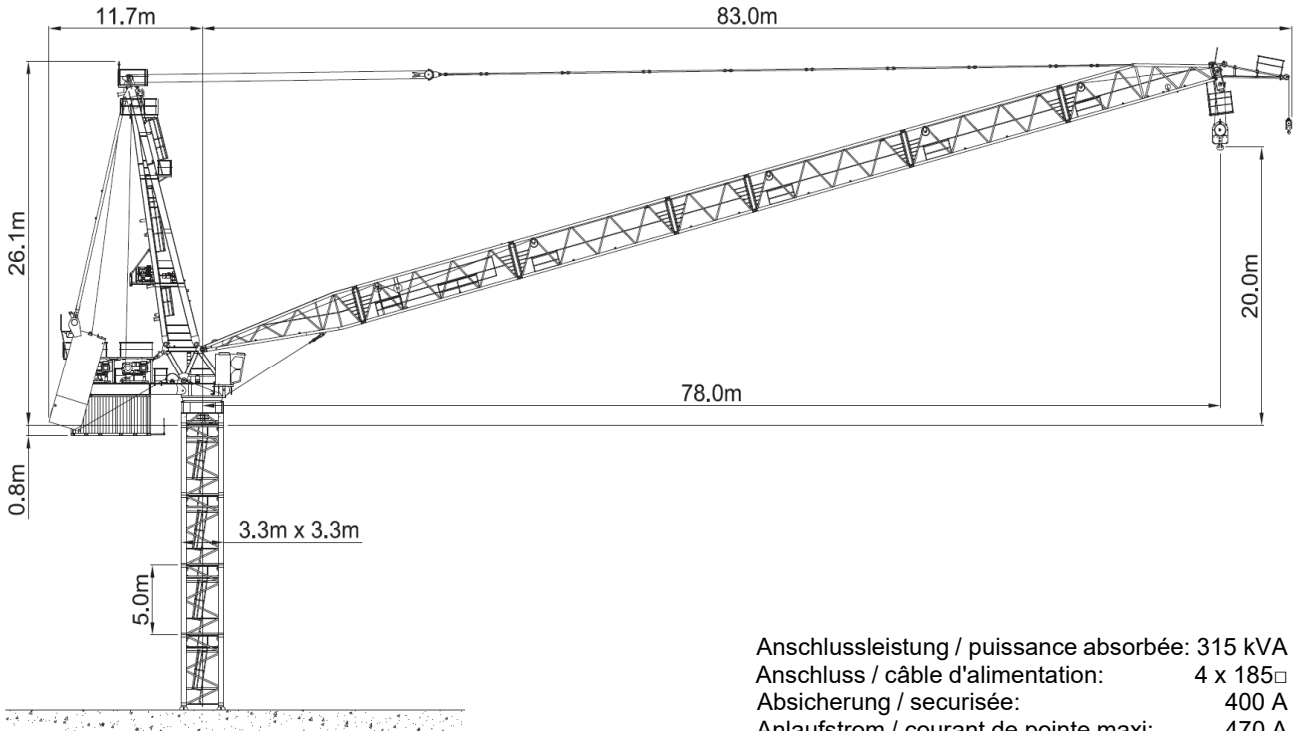


# Wilbert WT 1305L e.tronic



Anschlussleistung / puissance absorbée: 315 kVA  
 Anschluss / câble d'alimentation: 4 x 185□  
 Absicherung / sécurisée: 400 A  
 Anlaufstrom / courant de pointe maxi: 470 A

Ausladung (m) / portée (m)		15	30	36	42	48	54	60		
Auslegerlänge (m) flèche (m)	60	7.0 - 22.0		64.0	45.4	36.9	30.9	26.3	22.8	20.0
	54	6.0 - 22.5		64.0	46.4	37.6	31.3	26.6	23.0	
	48	5.0 - 23.0		64.0	47.4	38.3	31.8	27.0		
	42	4.5 - 23.5		64.0	48.5	39.1	32.5			
	36	4.0 - 24.0		64.0	49.9	40.5				
			<b>64.0 to</b>							Tragfähigkeit (t) capacité de charge (t)

Ausladung (m) / portée (m)		15	30	36	42	48	54	60	66	72		
Auslegerlänge (m) flèche (m)	72	9.0 - 24.5		48.0	39.0	32.3	27.5	23.9	21.1	18.9	17.0	15.5
	66	8.0 - 25.0		48.0	39.8	33.0	28.1	24.5	21.6	19.4	17.5	
	60	7.0 - 28.0		48.0	44.5	36.5	30.8	26.5	23.1	20.5		
	54	6.0 - 30.0		48.0	48.0	38.8	32.2	27.3	23.5			
	48	5.0 - 30.5		48.0	48.0	39.4	32.6	27.5				
	42	4.5 - 31.5		48.0	48.0	40.5	33.0					
	36	4.0 - 32.0		48.0	48.0	41.0						
			<b>48.0 to</b>							Tragfähigkeit (t) capacité de charge (t)		

Ausladung (m) / portée (m)		15	30	36	42	48	54	60	66	72	78		
Auslegerlänge (m) flèche (m)	78	10.0 - 35.0		32.0	32.0	31.1	26.6	23.2	20.5	18.4	16.7	15.2	14.0
	72	9.0 - 37.0		32.0	32.0	32.0	28.1	24.4	21.6	19.4	17.5	16.0	
	66	8.0 - 38.0		32.0	32.0	32.0	28.9	25.1	22.2	19.9	18.0		
	60	7.0 - 39.0		32.0	32.0	32.0	29.8	26.1	23.3	21.0			
	54	6.0 - 40.0		32.0	32.0	32.0	30.5	26.8	24.0				
	48	5.0 - 41.0		32.0	32.0	32.0	31.3	28.0					
	42	4.5 - 42.0		32.0	32.0	32.0	32.0						
	36	4.0 - 36.0		32.0	32.0	32.0							
			<b>32.0 to</b>							Tragfähigkeit (t) capacité de charge (t)			

	Motor FU (kW)	140		Motor FU (kW)	140		Motor FU (kW)	2 x 15
	m/min.	0 - 200		m/min.	0 - 3.0		r.p.m	0 - 0.7



**Kaufmann Turmkrane AG**  
 Rütisbergstr. 8, CH-8156 Oberhasli / ZH  
 Tel. 043 411 08 30  
[www.turmkrane.ch](http://www.turmkrane.ch) / [info@krankaufmann.ch](mailto:info@krankaufmann.ch)