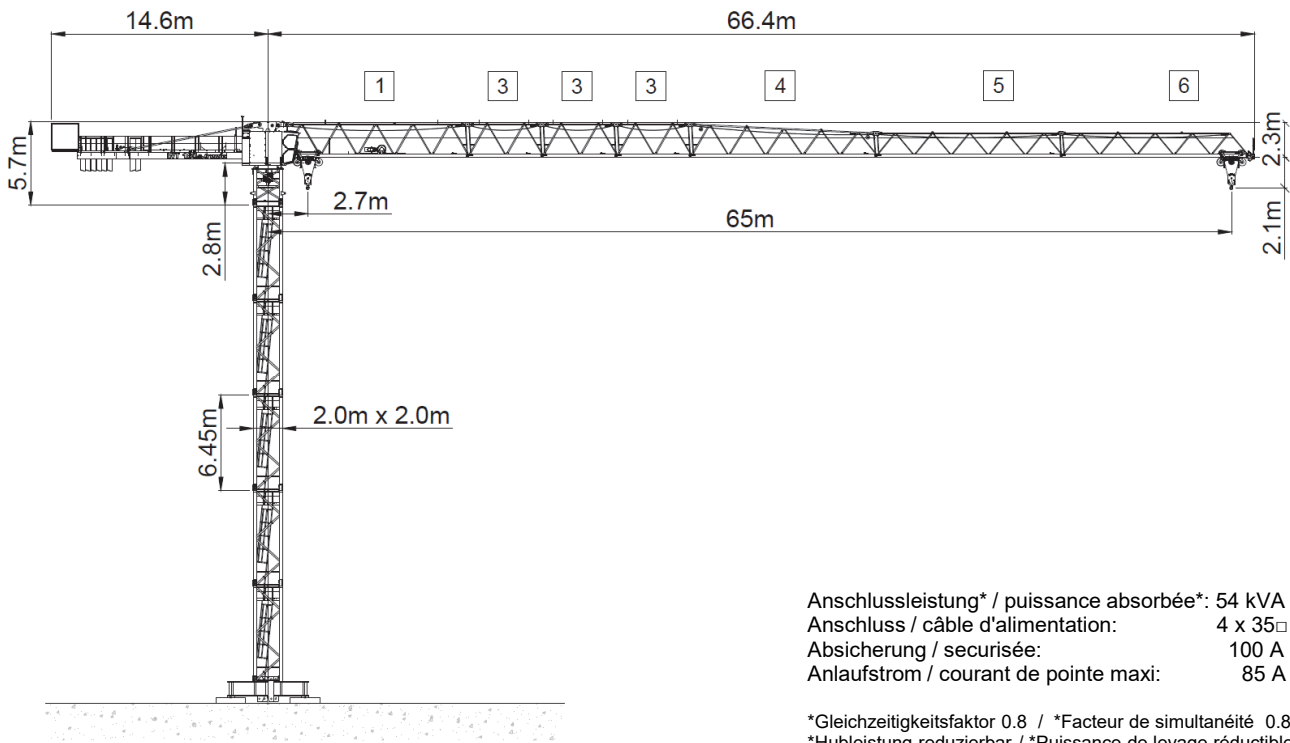


Wilbert WT 180 e.tronic LoadPlus (45 kW)



Anschlussleistung* / puissance absorbée*: 54 kVA
 Anschluss / câble d'alimentation: 4 x 35²
 Absicherung / sécurisée: 100 A
 Anlaufstrom / courant de pointe maxi: 85 A

*Gleichzeitigkeitsfaktor 0.8 / *Facteur de simultanéité 0.8
 *Hubleistung reduzierbar / *Puissance de levage réductible

Ausladung (m) / portée (m)			25	30	32.5	35	37.5	40	42.5	45	47.5	50	52.5	55	57.5	60	62.5	65	
Auslegerlänge (m) / flèche (m)	65	2.7 - 20.5	6.4	5.2	4.7	4.3	3.9	3.6	3.3	3.1	2.9	2.7	2.5	2.4	2.2	2.1	2.0	1.8	Tragfähigkeit (t) / capacité de charge (t)
	62.5	2.7 - 21.9	6.9	5.6	5.1	4.6	4.3	3.9	3.7	3.4	3.2	3.0	2.8	2.6	2.4	2.3	2.2		
	60	2.7 - 24.7	7.9	6.4	5.8	5.3	4.9	4.6	4.2	3.9	3.7	3.4	3.2	3.0	2.9	2.7			
	57.5	2.7 - 26.4	8.0	6.9	6.3	5.8	5.3	4.9	4.6	4.3	4.0	3.8	3.5	3.3	3.1				
	55	2.7 - 27.5	8.0	7.3	6.6	6.1	5.6	5.2	4.8	4.5	4.2	4.0	3.7	3.5					
	52.5	2.7 - 28.0	8.0	7.4	6.8	6.2	5.7	5.3	4.9	4.6	4.3	4.0	3.8						
	50	2.7 - 28.9	8.0	7.7	7.0	6.4	5.9	5.5	5.1	4.8	4.5	4.2							
	47.5	2.7 - 30.6	8.0	8.0	7.5	6.9	6.4	5.9	5.5	5.1	4.8								
	45	2.7 - 30.5	8.0	8.0	7.5	6.8	6.3	5.9	5.5	5.1									
	42.5	2.7 - 32.6	8.0	8.0	8.0	7.4	6.8	6.3	5.9										
	40	2.7 - 33.3	8.0	8.0	8.0	7.6	7.0	6.5											
	37.5	2.7 - 35.4	8.0	8.0	8.0	8.0	7.5												
	35	2.7 - 35.0	8.0	8.0	8.0	8.0													
	32.5	2.7 - 32.5	8.0	8.0	8.0														
	30	2.7 - 30.0	8.0	8.0															
25	2.7 - 25.0	8.0																	

Motor FU (kW) 45 m/min. 0 - 170	Motor FU (kW) 7.5 m/min. 8 - 110	Motor FU (kW) 2 x 7.5 r.p.m 0.8
------------------------------------	-------------------------------------	------------------------------------



Kaufmann Turmkrane AG
 info@krankaufmann.ch
 turmkrane.ch

Rütisbergstrasse 8
 8156 Oberhasli
 +41 43 411 08 30

Rue de Long Vernex 1
 1545 Chevroux
 +41 26 667 00 28