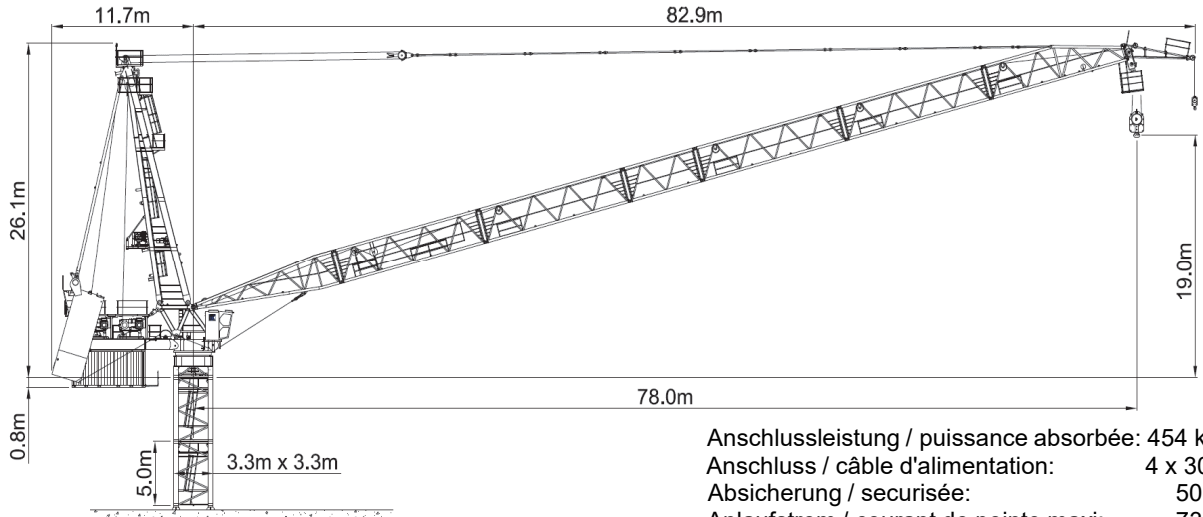


Wilbert WT 1905L e.tronic



Anschlussleistung / puissance absorbée: 454 kVA
 Anschluss / câble d'alimentation: 4 x 300□
 Absicherung / sécurisée: 500 A
 Anlaufstrom / courant de pointe maxi: 738 A

Ausladung (m) / portée (m)			15	30	36	42	48	54		
Auslegerlänge (m) flèche (m)	54	6.0 - 22.5	5-Strang 80.0 to	80.0	59.4	49.1	41.8	36.3	32.0	Tragfähigkeit (t) capacité de charge (t)
	48	5.0 - 23.0		80.0	61.2	50.9	43.5	38.0		
	42	4.5 - 24.0		80.0	63.7	52.8	45.0			
	36	4.0 - 24.5		80.0	65.0	54.0				

Ausladung (m) / portée (m)			15	30	36	42	48	54	60	66	72		
Auslegerlänge (m) flèche (m)	72	9.0 - 28.0	4-Strang 64.0 to	64.0	59.5	49.1	41.7	36.1	31.8	28.3	25.4	23.1	Tragfähigkeit (t) capacité de charge (t)
	66	8.0 - 29.0		64.0	61.7	50.7	42.8	36.9	32.3	28.6	25.6		
	60	7.0 - 30.0		64.0	64.0	52.2	43.9	37.6	32.7	28.8			
	54	6.0 - 30.5		64.0	64.0	53.0	44.4	37.9	32.9				
	48	5.0 - 31.0		64.0	64.0	54.3	45.7	39.2					
	42	4.5 - 31.5		64.0	64.0	55.5	47.0						
	36	4.0 - 32.0		64.0	64.0	56.0							

Ausladung (m) / portée (m)			15	30	36	42	48	54	60	66	72		
Auslegerlänge (m) flèche (m)	72	9.0 - 38.0	3-Strang 48.0 to	48.0	48.0	48.0	43.0	37.1	32.5	28.8	25.8	23.3	Tragfähigkeit (t) capacité de charge (t)
	66	8.0 - 39.0		48.0	48.0	48.0	44.2	37.9	33.0	29.2	26.0		
	60	7.0 - 40.0		48.0	48.0	48.0	45.3	38.7	33.4	29.3			
	54	6.0 - 41.0		48.0	48.0	48.0	46.6	39.2	33.5				
	48	5.0 - 42.0		48.0	48.0	48.0	48.0	40.0					
	42	4.5 - 42.0		48.0	48.0	48.0	48.0						
	36	4.0 - 36.0		48.0	48.0	48.0							

Ausladung (m) / portée (m)			15	30	36	42	48	54	60	66	72	78		
Auslegerlänge (m) flèche (m)	78	10.0 - 53.0	2-Strang 32.0 to	32.0	32.0	32.0	32.0	32.0	31.2	27.2	24.0	21.3	19.0	Tragfähigkeit (t) capacité de charge (t)
	72	9.0 - 55.0		32.0	32.0	32.0	32.0	32.0	32.0	29.0	26.0	23.5		
	66	8.0 - 56.0		32.0	32.0	32.0	32.0	32.0	32.0	29.6	26.5			
	60	7.0 - 57.0		32.0	32.0	32.0	32.0	32.0	32.0	30.0				
	54	6.0 - 54.0		32.0	32.0	32.0	32.0	32.0	32.0	32.0				
	48	5.0 - 48.0		32.0	32.0	32.0	32.0	32.0	32.0					
	42	4.5 - 42.0		32.0	32.0	32.0	32.0	32.0						
	36	4.0 - 36.0		32.0	32.0	32.0								

Motor FU (kW) 1 x 140 m/min. 0 - 171 Motor FU (kW) 2 x 140 m/min. 0 - 200	Motor FU (kW) 140 m/min. 0 - 3.0	Motor FU (kW) 2 x 15 r.p.m 0 - 0.7



Kaufmann Turmkrane AG
 Rütisbergstr. 8, CH-8156 Oberhasli / ZH
 Tel. 043 411 08 30
www.turmkrane.ch / info@krankaufmann.ch