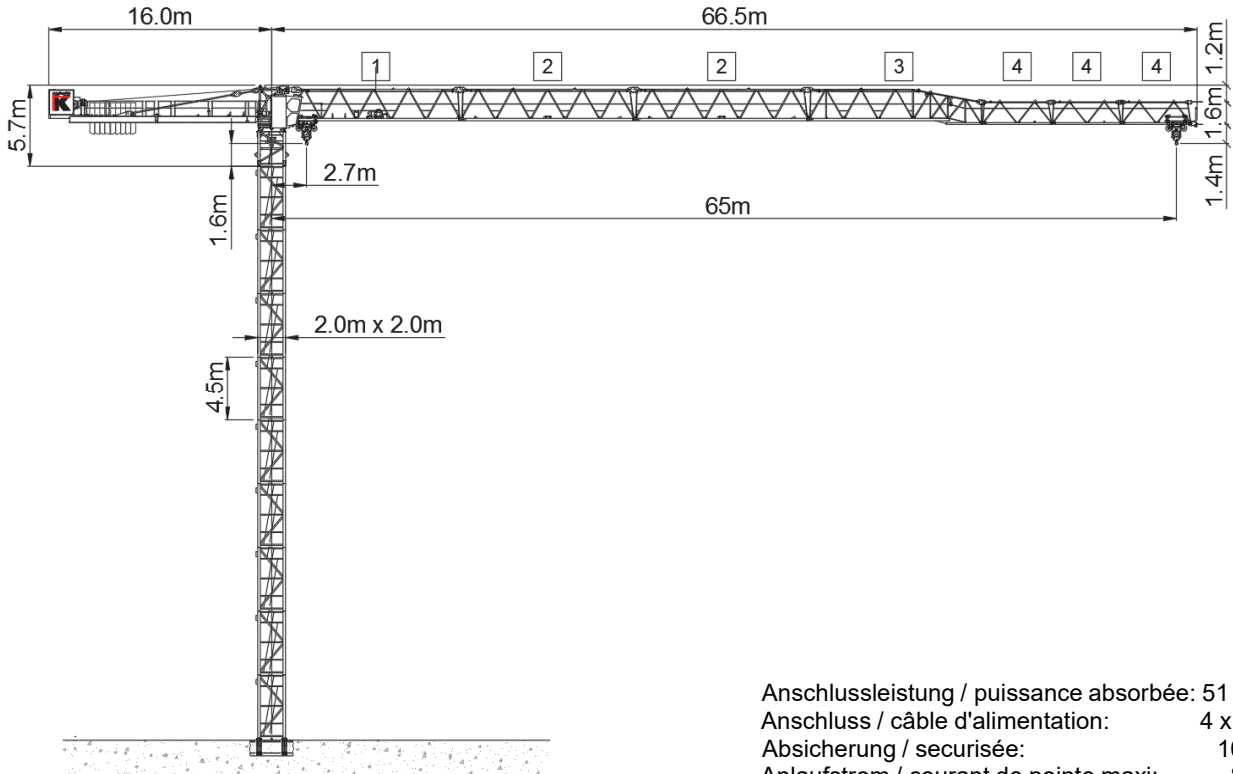


Wilbert WT 200 e.tronic (45 kW)



Anschlussleistung / puissance absorbée: 51 kVA
 Anschluss / câble d'alimentation: 4 x 35□
 Absicherung / sécurisée: 100 A
 Anlaufstrom / courant de pointe maxi: 80 A

Ausladung (m) / portée (m)			25	30	32.5	35	37.5	40	42.5	45	47.5	50	52.5	55	57.5	60	62.5	65	Tragfähigkeit (t) / capacité de charge (t)
Auslegerlänge (m) / flèche (m)	65	2.7 - 18.5	5.7	4.6	4.2	3.8	3.5	3.3	3.0	2.8	2.6	2.5	2.3	2.2	2.0	1.9	1.8	1.7	
	62.5	2.7 - 22.7	7.2	5.9	5.4	4.9	4.5	4.2	3.9	3.6	3.4	3.2	3.0	2.8	2.7	2.5	2.4		
	60	2.7 - 23.9	7.6	6.2	5.7	5.2	4.8	4.5	4.1	3.9	3.6	3.4	3.2	3.0	2.9	2.7			
	57.5	2.7 - 24.8	7.9	6.5	5.9	5.4	5.0	4.7	4.3	4.1	3.8	3.6	3.4	3.2	3.0				
	55	2.7 - 25.6	8.0	6.7	6.1	5.6	5.2	4.8	4.5	4.2	3.9	3.7	3.5	3.3					
	52.5	2.7 - 26.8	8.0	7.1	6.5	6.0	5.5	5.1	4.8	4.5	4.2	3.9	3.7						
	50	2.7 - 27.3	8.0	7.2	6.6	6.1	5.6	5.2	4.8	4.5	4.3	4.0							
	47.5	2.7 - 27.7	8.0	7.3	6.7	6.2	5.7	5.3	4.9	4.6	4.3								
	45	2.7 - 28.5	8.0	7.6	6.9	6.4	5.9	5.5	5.1	4.8									
	42.5	2.7 - 28.6	8.0	7.6	6.9	6.4	5.9	5.5	5.1										
	40	2.7 - 28.9	8.0	7.7	7.0	6.5	6.0	5.6											
	37.5	2.7 - 29.0	8.0	7.7	7.0	6.5	6.0												
	35	2.7 - 29.1	8.0	7.7	7.1	6.5													
	32.5	2.7 - 29.2	8.0	7.8	7.1														
	30	2.7 - 29.3	8.0	7.8															
25	2.7 - 25.0	8.0																	

Motor FU (kW) 45 m/min. 0 - 132	Motor FU (kW) 7.5 m/min. 8 - 100	Motor FU (kW) 2 x 5.5 r.p.m 0.8
------------------------------------	-------------------------------------	------------------------------------



Kaufmann Turmkrane AG
 info@krankaufmann.ch
 turmkrane.ch

Rütisbergstrasse 8
 8156 Oberhasli
 +41 43 411 08 30

Rue de Long Vernex 1
 1545 Chevroux
 +41 26 667 00 28