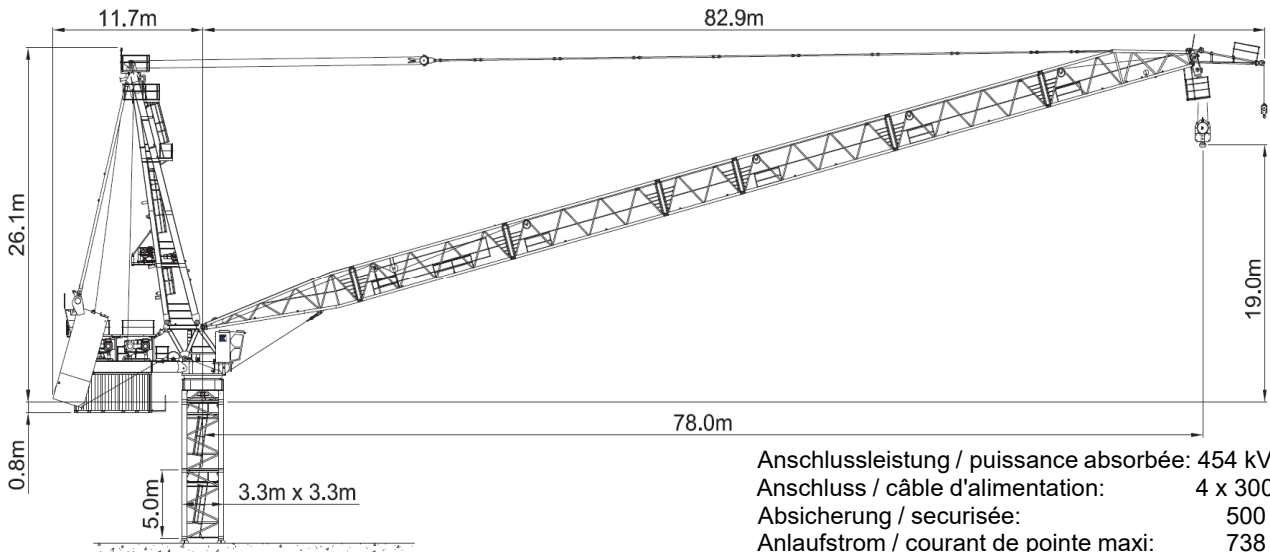


Wilbert WT 2405L e.tronic



Anschlussleistung / puissance absorbée: 454 kVA
 Anschluss / câble d'alimentation: 4 x 300□
 Absicherung / sécurisée: 500 A
 Anlaufstrom / courant de pointe maxi: 738 A

Ausladung (m) / portée (m)		8-Strang	15	30	36	42	Tragfähigkeit (t) / capacité de charge (t)
Auslegerlänge (m) / flèche (m)	42		4.5 - 19.0	128.0	79.8	65.9	
	36	4.0 - 19.5	128.0	81.4	60.0		

Ausladung (m) / portée (m)		6-Strang	15	30	36	42	48	54	Tragfähigkeit (t) / capacité de charge (t)	
Auslegerlänge (m) / flèche (m)	54		6.0 - 20.5	96.0	65.6	54.7	46.9	41.0		36.5
	48		5.0 - 22.5	96.0	72.0	60.0	51.4	45.0		
	42		4.5 - 24.5	96.0	78.6	56.6	56.4			
	36	4.0 - 25.5	96.0	81.3	67.5					

Ausladung (m) / portée (m)		4-Strang	15	30	36	42	48	54	60	66	72	Tragfähigkeit (t) / capacité de charge (t)	
Auslegerlänge (m) / flèche (m)	72		9.0 - 30.0	64.0	64.0	52.5	44.2	38.0	33.2	29.4	26.2		23.6
	66		8.0 - 31.0	64.0	64.0	54.5	46.2	40.0	35.1	31.2	28.0		
	60		7.0 - 32.0	64.0	64.0	56.2	47.4	40.8	35.6	31.5			
	54		6.0 - 33.0	64.0	64.0	58.2	49.2	42.4	37.2				
	48		5.0 - 34.0	64.0	64.0	60.4	51.9	45.5					
	42		4.5 - 36.0	64.0	64.0	64.0	56.8						
	36		4.0 - 36.0	64.0	64.0	64.0							

Ausladung (m) / portée (m)		3-Strang	15	30	36	42	48	54	60	66	72	Tragfähigkeit (t) / capacité de charge (t)	
Auslegerlänge (m) / flèche (m)	72		9.0 - 40.0	48.0	48.0	48.0	45.4	38.9	33.9	29.9	26.5		23.8
	66		8.0 - 40.5	48.0	48.0	48.0	46.2	40.0	35.2	31.4	28.3		
	60		7.0 - 41.0	48.0	48.0	48.0	46.8	40.5	35.6	31.8			
	54		6.0 - 41.5	48.0	48.0	48.0	47.4	41.8	37.5				
	48		5.0 - 42.0	48.0	48.0	48.0	48.0	46.0					
	42		4.5 - 42.0	48.0	48.0	48.0	48.0						
36	4.0 - 36.0	48.0	48.0	48.0									

Ausladung (m) / portée (m)		2-Strang	15	30	36	42	48	54	60	66	72	78	Tragfähigkeit (t) / capacité de charge (t)	
Auslegerlänge (m) / flèche (m)	78		10.0 - 55.0	32.0	32.0	32.0	32.0	32.0	32.0	28.4	24.9	22.0		19.5
	72		9.0 - 57.0	32.0	32.0	32.0	32.0	32.0	32.0	30.0	26.7	24.0		
	66		8.0 - 59.0	32.0	32.0	32.0	32.0	32.0	32.0	31.4	28.5			
	60		7.0 - 60.0	32.0	32.0	32.0	32.0	32.0	32.0	32.0				
	54		6.0 - 54.0	32.0	32.0	32.0	32.0	32.0	32.0	32.0				
	48		5.0 - 48.0	32.0	32.0	32.0	32.0	32.0						
	42		4.5 - 42.0	32.0	32.0	32.0	32.0							
36	4.0 - 36.0	32.0	32.0	32.0										

Motor FU (kW) 1 x 140 m/min. 0 - 171 Motor FU (kW) 2 x 140 m/min. 0 - 200	Motor FU (kW) 140 m/min. 0 - 3.0	Motor FU (kW) 2 x 15 r.p.m 0 - 0.7



Kaufmann Turmkrane AG
 Rütisbergstr. 8, CH-8156 Oberhasli / ZH
 Tel. 043 411 08 30
www.turmkrane.ch / info@krankaufmann.ch