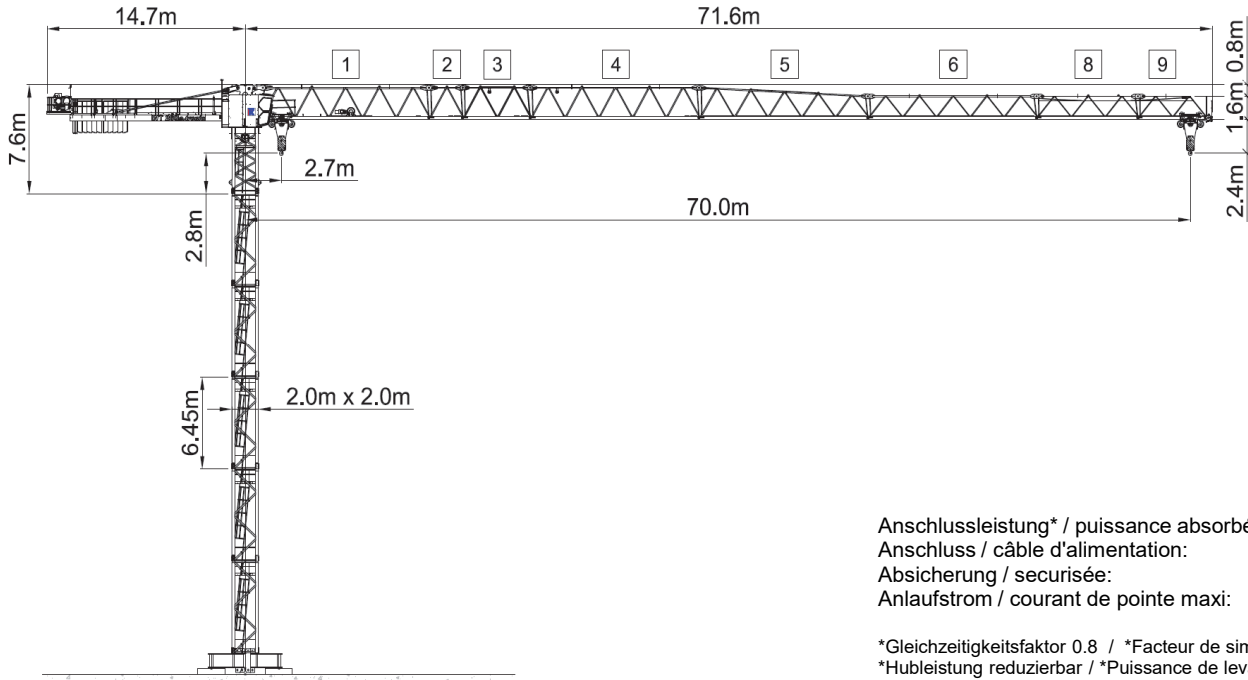


# Wilbert 260 S e.tronic LoadPlus (65 kW)



Anschlussleistung\* / puissance absorbée\*: 70 kVA  
 Anschluss / câble d'alimentation: 4 x 50□  
 Absicherung / sécurisée: 125 A  
 Anlaufstrom / courant de pointe maxi: 110 A

\*Gleichzeitigkeitsfaktor 0.8 / \*Facteur de simultanéité 0.8  
 \*Hubleistung reduzierbar / \*Puissance de levage réductible

Ausladung (m) / portée (m)		25	27.5	30	32.5	35	37.5	40	42.5	45	47.5	50	52.5	55	57.5	60	62.5	65	67.5	70		
Auslegerlänge (m) / flèche (m)	70	2.7 - 21.9	10.36	9.31	8.43	7.69	7.05	6.50	6.02	5.59	5.21	4.88	4.57	4.29	4.04	3.82	3.61	3.41	3.23	3.07	<b>2.92</b>	Tragfähigkeit (t) / capacité de charge (t)
	67.5	2.7 - 22.8	10.82	9.73	8.82	8.04	7.38	6.81	6.31	5.86	5.47	5.12	4.80	4.51	4.25	4.02	3.80	3.60	3.41	<b>3.24</b>		
	65	2.7 - 23.5	11.22	10.09	9.15	8.35	7.66	7.07	6.55	6.10	5.69	5.33	5.00	4.70	4.43	4.19	3.96	3.76	<b>3.56</b>			
	62.5	2.7 - 24.1	11.55	10.39	9.42	8.60	7.90	7.29	6.76	6.29	5.87	5.50	5.17	4.86	4.58	4.33	4.10	<b>3.89</b>				
	60	2.7 - 25.1	12.00	10.87	9.86	9.01	8.28	7.64	7.09	6.60	6.17	5.78	5.43	5.11	4.82	4.56	<b>4.32</b>					
	57.5	2.7 - 26.0	12.00	11.27	10.23	9.35	8.59	7.94	7.36	6.86	6.41	6.01	5.65	5.32	5.02	<b>4.75</b>						
	55	2.7 - 27.1	12.00	11.80	10.72	9.80	9.01	8.33	7.73	7.21	6.74	6.32	5.94	5.60	<b>5.29</b>							
	52.5	2.7 - 27.6	12.00	12.00	10.93	10.00	9.20	8.50	7.89	7.36	6.88	6.45	6.07	<b>5.72</b>								
	50	2.7 - 27.9	12.00	12.00	11.07	10.13	9.32	8.61	8.00	7.46	6.98	6.54	<b>6.16</b>									
	47.5	2.7 - 28.4	12.00	12.00	11.31	10.35	9.52	8.81	8.18	7.63	7.14	<b>6.70</b>										
	45	2.7 - 28.8	12.00	12.00	11.46	10.49	9.65	8.93	8.29	7.73	<b>7.24</b>											
	42.5	2.7 - 29.3	12.00	12.00	11.68	10.69	9.83	9.10	8.45	<b>7.88</b>												
	40	2.7 - 29.8	12.00	12.00	11.93	10.92	10.05	9.30	<b>8.64</b>													
	37.5	2.7 - 31.0	12.00	12.00	12.00	11.40	10.50	<b>9.72</b>														
	35	2.7 - 31.8	12.00	12.00	12.00	10.72	<b>10.80</b>															
	32.5	2.7 - 32.2	12.00	12.00	12.00	<b>11.88</b>																
	30	2.7 - 30.0	12.00	12.00	<b>12.00</b>																	
27.5	2.7 - 27.5	12.00	<b>12.00</b>																			
25	2.7 - 25.0	<b>12.00</b>																				

Motor FU (kW) 65 m/min. 0 - 137	Motor FU (kW) 7.5 m/min. 8 - 110	Motor FU (kW) 2 x 7.5 r.p.m. 0.8



Kaufmann Turmkrane AG  
 info@krankaufmann.ch  
 turmkrane.ch

Rütisbergstrasse 8  
 8156 Oberhasli  
 +41 43 411 08 30

Rue de Long Vernex 1  
 1545 Chevroux  
 +41 26 667 00 28