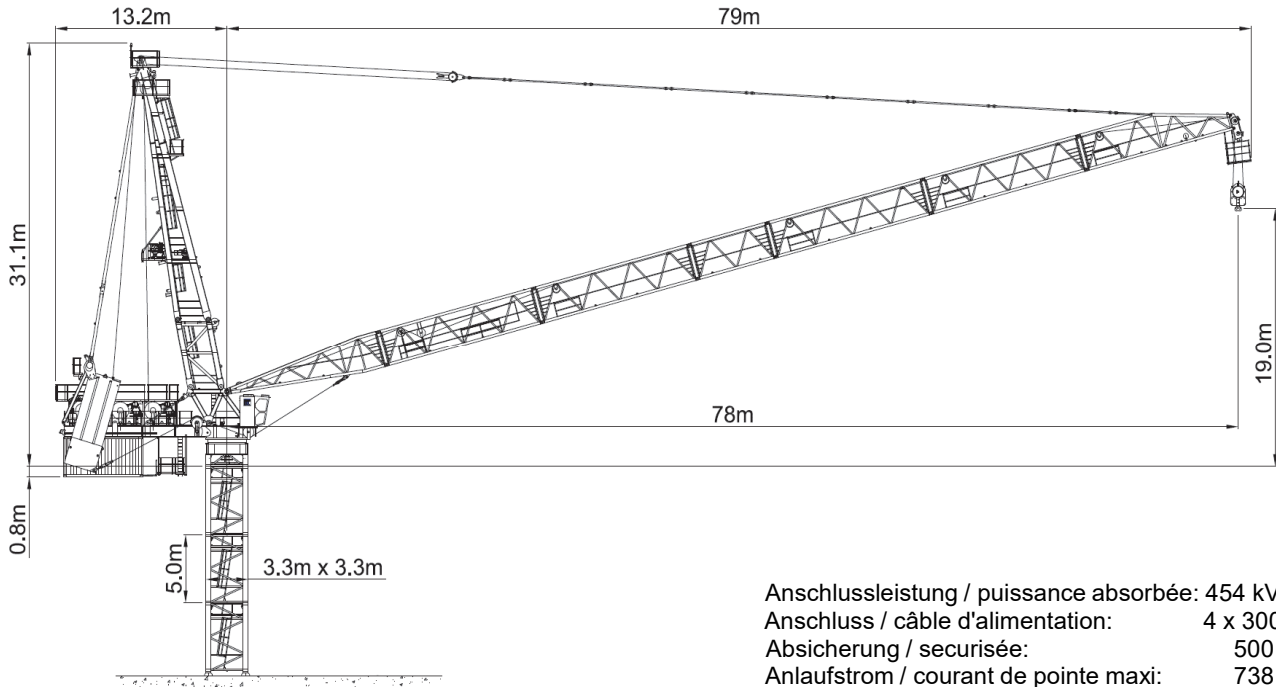


Wilbert WT 2705L e.tronic



Anschlussleistung / puissance absorbée: 454 kVA
 Anschluss / câble d'alimentation: 4 x 300□
 Absicherung / sécurisée: 500 A
 Anlaufstrom / courant de pointe maxi: 738 A

Ausladung (m) / portée (m)		15	30	36	42	48	54	60		
Auslegerlänge (m) flèche (m)	60	7.0 - 16.0	8-Strang	128.0	64.0	51.8	43.1	36.6	31.5	27.5
	54	6.0 - 17.0		128.0	68.5	55.5	46.3	39.4	34.0	
	48	5.0 - 18.0		128.0	73.2	59.6	49.8	42.5		
	42	4.5 - 19.0		128.0	79.7	65.9	56.0			
	36	4.0 - 19.5		128.0 to	128.0	81.4	67.0			
Tragfähigkeit (t) capacité de charge (t)										

Ausladung (m) / portée (m)		15	30	36	42	48	54	60	66	72		
Auslegerlänge (m) flèche (m)	72	9.0 - 20.5	6-Strang	96.0	62.4	50.3	41.6	35.1	30.0	26.0	22.8	20.0
	66	8.0 - 21.0		96.0	64.3	52.0	43.2	36.6	31.5	27.4	24.0	
	60	7.0 - 21.5		96.0	66.2	53.6	44.6	37.9	32.7	28.5		
	54	6.0 - 22.0		96.0	69.2	56.9	48.2	41.6	36.5			
	48	5.0 - 22.5		96.0	72.0	60.0	51.4	45.0				
	42	4.5 - 24.5		96.0	78.6	65.6	56.4					
	36	4.0 - 25.5		96.0	81.3	67.5						
Tragfähigkeit (t) capacité de charge (t)												

Ausladung (m) / portée (m)		15	30	36	42	48	54	60	66	72	78		
Auslegerlänge (m) flèche (m)	78	10.0 - 28.0	4-Strang	64.0	59.3	48.4	40.6	34.7	30.2	26.5	23.5	21.1	19.0
	72	9.0 - 30.0		64.0	64.0	52.4	44.2	38.0	33.2	29.3	26.2	23.6	
	66	8.0 - 31.0		64.0	64.0	54.3	45.7	39.2	34.2	30.2	27.0		
	60	7.0 - 32.0		64.0	64.0	56.2	47.4	40.7	35.6	31.5			
	54	6.0 - 33.0		64.0	64.0	58.2	49.2	42.4	37.2				
	48	5.0 - 34.0		64.0	64.0	60.4	51.9	45.5					
	42	4.5 - 37.5		64.0	64.0	64.0	56.8						
	36	4.0 - 36.0		64.0	64.0	64.0							
Tragfähigkeit (t) capacité de charge (t)													

Motor FU (kW) 1 x 140 m/min. 0 - 171 Motor FU (kW) 2 x 140 m/min. 0 - 200	Motor FU (kW) 140 m/min. 0 - 3.0	Motor FU (kW) 2 x 15 r.p.m 0 - 0.7



Kaufmann Turmkrane AG
 Rütisbergstr. 8, CH-8156 Oberhasli / ZH
 Tel. 043 411 08 30
www.turmkrane.ch / info@krankaufmann.ch