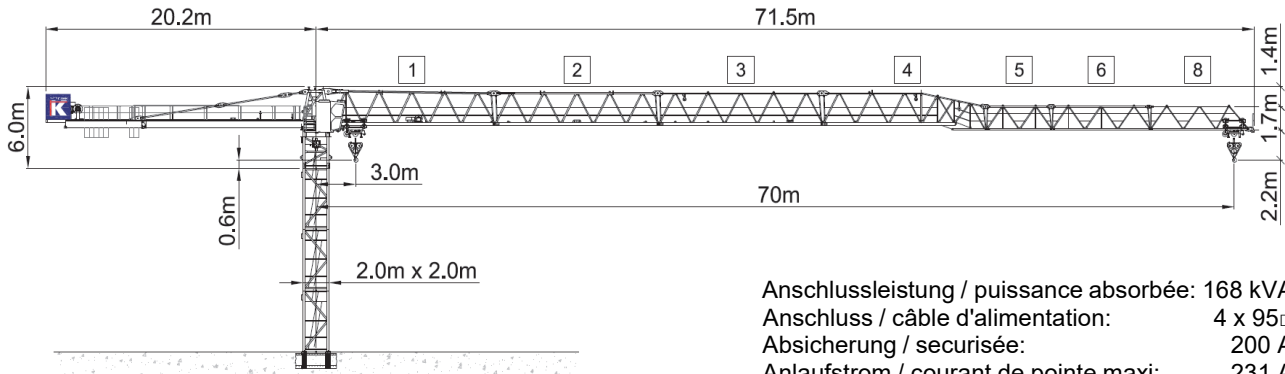


# Wilbert WT 300 e.tronic (110 kW)



Anschlussleistung / puissance absorbée: 168 kVA  
 Anschluss / câble d'alimentation: 4 x 95  
 Absicherung / sécurisée: 200 A  
 Anlaufstrom / courant de pointe maxi: 231 A

Ausladung (m) / portée (m)		25	30	32.5	35	37.5	40	42.5	45	47.5	50	52.5	55	57.5	60	62.5	65	67.5	70	
Auslegerlänge (m) / flèche (m)	70	3.0 - 20.1	12.6	10.3	9.4	8.6	7.9	7.4	6.8	6.4	6.0	5.6	5.3	5.0	4.7	4.4	4.2	4.0	3.8	3.6
	67.5	3.0 - 20.6	12.9	10.5	9.6	8.8	8.1	7.5	7.0	6.6	6.1	5.8	5.4	5.1	4.8	4.6	4.3	4.1	3.9	
	65	3.0 - 20.9	13.2	10.7	9.8	9.0	8.3	7.7	7.2	6.7	6.3	5.9	5.5	5.2	4.9	4.7	4.4	4.2		
	62.5	3.0 - 21.2	13.4	10.9	9.9	9.1	8.4	7.8	7.3	6.8	6.4	6.0	5.6	5.3	5.0	4.7	4.5			
	60	3.0 - 21.7	13.7	11.2	10.2	9.4	8.7	8.1	7.5	7.0	6.6	6.2	5.8	5.5	5.2	4.9				
	57.5	3.0 - 22.1	14.0	11.4	10.5	9.6	8.9	8.2	7.7	7.2	6.7	6.3	5.9	5.6	5.3					
	55	3.0 - 22.4	14.2	11.6	10.6	9.8	9.0	8.4	7.8	7.3	6.8	6.4	6.0	5.7						
	52.5	3.0 - 22.6	14.4	11.7	10.7	9.9	9.1	8.4	7.9	7.4	6.9	6.5	6.1							
	50	3.0 - 23.3	14.8	12.1	11.1	10.2	9.4	8.7	8.1	7.6	7.1	6.7								
	47.5	3.0 - 23.5	14.9	12.2	11.2	10.3	9.5	8.8	8.2	7.7	7.2									
	45	3.0 - 23.8	15.2	12.4	11.3	10.4	9.6	9.0	8.3	7.8										
	42.5	3.0 - 23.9	15.3	12.5	11.4	10.5	9.7	9.0	8.4											
	40	3.0 - 24.1	15.4	12.6	11.5	10.6	9.8	9.1												
	37.5	3.0 - 24.4	15.6	12.7	11.6	10.7	9.9													
	35	3.0 - 24.5	15.7	12.8	11.7	10.8														
	32.5	3.0 - 24.7	15.8	12.9	11.8															
30	3.0 - 24.8	15.8	12.9																	
25	3.0 - 25.0	16.0																		



16.0 to

Tragfähigkeit (t) / capacité de charge (t)

Ausladung (m) / portée (m)		25	30	32.5	35	37.5	40	42.5	45	47.5	50	52.5	55	57.5	60	62.5	65	67.5	70	
Auslegerlänge (m) / flèche (m)	70	3.0 - 38.9	8.0	8.0	8.0	8.0	7.9	7.8	7.2	6.8	6.4	6.0	5.7	5.4	5.1	4.8	4.6	4.4	4.2	4.0
	67.5	3.0 - 39.7	8.0	8.0	8.0	8.0	8.0	7.9	7.4	7.0	6.5	6.2	5.8	5.5	5.2	5.0	4.7	4.5	4.3	
	65	3.0 - 40.4	8.0	8.0	8.0	8.0	8.0	8.0	7.6	7.1	6.7	6.3	5.9	5.6	5.3	5.1	4.8	4.6		
	62.5	3.0 - 40.9	8.0	8.0	8.0	8.0	8.0	8.0	7.7	7.2	6.8	6.4	6.0	5.7	5.4	5.1	4.9			
	60	3.0 - 42.0	8.0	8.0	8.0	8.0	8.0	8.0	7.9	7.4	7.0	6.6	6.2	5.9	5.6	5.3				
	57.5	3.0 - 42.8	8.0	8.0	8.0	8.0	8.0	8.0	8.0	7.6	7.1	6.7	6.3	6.0	5.7					
	55	3.0 - 43.4	8.0	8.0	8.0	8.0	8.0	8.0	8.0	7.7	7.2	6.8	6.4	6.1						
	52.5	3.0 - 43.8	8.0	8.0	8.0	8.0	8.0	8.0	8.0	7.8	7.3	6.9	6.5							
	50	3.0 - 45.0	8.0	8.0	8.0	8.0	8.0	8.0	8.0	8.0	7.5	7.1								
	47.5	3.0 - 45.4	8.0	8.0	8.0	8.0	8.0	8.0	8.0	8.0	7.6									
	45	3.0 - 45.0	8.0	8.0	8.0	8.0	8.0	8.0	8.0	8.0										
	42.5	3.0 - 42.5	8.0	8.0	8.0	8.0	8.0	8.0	8.0											
	40	3.0 - 40.0	8.0	8.0	8.0	8.0	8.0	8.0												
	37.5	3.0 - 37.5	8.0	8.0	8.0	8.0	8.0													
	35	3.0 - 35.0	8.0	8.0	8.0	8.0														
	32.5	3.0 - 32.5	8.0	8.0	8.0															
30	3.0 - 30.0	8.0	8.0																	
25	3.0 - 25.0	8.0																		



8.0 to

Tragfähigkeit (t) / capacité de charge (t)

↑	Motor FU (kW)	110	↔	Motor FU (kW)	9.2	↻	Motor FU (kW)	2 x 7.5
	m/min.	0 - 224		m/min.	8 - 100		r.p.m	0.8



**Kaufmann Turmkrane AG**  
 Rütisbergstr. 8, CH-8156 Oberhasli / ZH  
 Tel. 043 411 08 30  
[www.turmkrane.ch](http://www.turmkrane.ch) / [info@krankaufmann.ch](mailto:info@krankaufmann.ch)