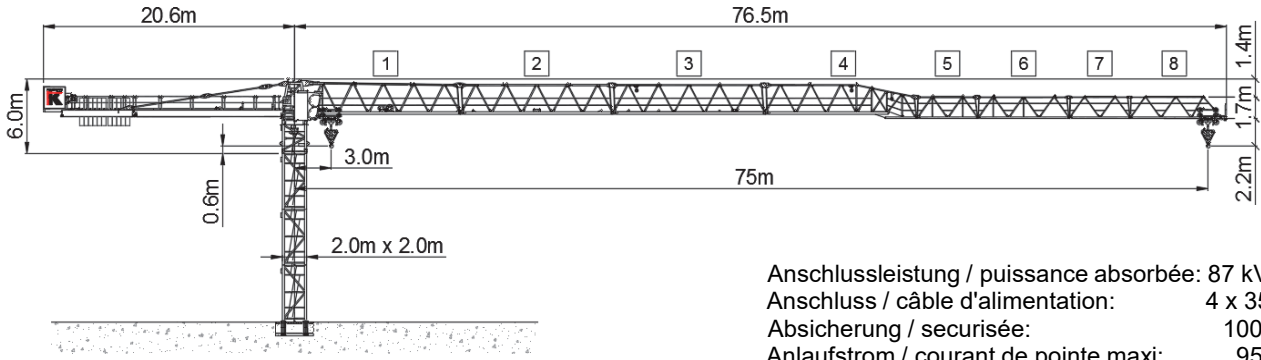


Wilbert WT 320 e.tronic (45 kW)



Anschlussleistung / puissance absorbée: 87 kVA
 Anschluss / câble d'alimentation: 4 x 35□
 Absicherung / sécurisée: 100 A
 Anlaufstrom / courant de pointe maxi: 95 A

Ausladung (m) / portée (m)		25	30	32.5	35	37.5	40	42.5	45	47.5	50	52.5	55	57.5	60	62.5	65	67.5	70	72.5	75	
Auslegerlänge (m) / flèche (m)	75	3.0 - 23.7	11.3	9.2	8.4	7.7	7.1	6.6	6.1	5.7	5.3	5.0	4.7	4.4	4.2	4.0	3.7	3.5	3.4	3.2	3.0	2.9
	72.5	3.0 - 24.5	11.8	9.6	8.7	8.0	7.4	6.9	6.4	6.0	5.6	5.2	4.9	4.6	4.4	4.1	3.9	3.7	3.5	3.4	3.2	3.0
	70	3.0 - 26.3	12.0	10.4	9.5	8.7	8.0	7.5	6.9	6.5	6.1	5.7	5.4	5.1	4.8	4.5	4.3	4.1	3.9	3.7	3.5	3.2
	67.5	3.0 - 26.9	12.0	10.6	9.7	8.9	8.2	7.6	7.1	6.7	6.2	5.9	5.5	5.2	4.9	4.7	4.4	4.2	4.0	3.9	3.7	3.5
	65	3.0 - 27.4	12.0	10.8	9.9	9.1	8.4	7.8	7.3	6.8	6.4	6.0	5.6	5.3	5.0	4.8	4.5	4.3	4.1	3.9	3.7	3.5
	62.5	3.0 - 27.7	12.0	11.0	10.0	9.2	8.5	7.9	7.4	6.9	6.5	6.1	5.7	5.4	5.1	4.8	4.6	4.4	4.2	4.0	3.8	3.6
	60	3.0 - 28.4	12.0	11.3	10.3	9.5	8.8	8.2	7.6	7.1	6.7	6.3	5.9	5.6	5.3	5.0	4.8	4.6	4.4	4.2	4.0	3.8
	57.5	3.0 - 29.0	12.0	11.5	10.6	9.7	9.0	8.3	7.8	7.3	6.8	6.4	6.0	5.7	5.4	5.1	4.9	4.7	4.5	4.3	4.1	3.9
	55	3.0 - 29.4	12.0	11.7	10.7	9.9	9.1	8.5	7.9	7.4	6.9	6.5	6.1	5.8	5.5	5.2	5.0	4.8	4.6	4.4	4.2	4.0
	52.5	3.0 - 29.6	12.0	11.8	10.8	10.0	9.2	8.5	8.0	7.5	7.0	6.6	6.2	5.9	5.6	5.3	5.1	4.9	4.7	4.5	4.3	4.1
	50	3.0 - 30.4	12.0	12.0	11.2	10.3	9.5	8.8	8.2	7.7	7.2	6.8	6.4	6.0	5.7	5.4	5.1	4.9	4.7	4.5	4.3	4.1
	47.5	3.0 - 30.7	12.0	12.0	11.3	10.4	9.6	8.9	8.3	7.8	7.3	6.9	6.5	6.1	5.8	5.5	5.2	5.0	4.8	4.6	4.4	4.2
	45	3.0 - 31.1	12.0	12.0	11.4	10.5	9.7	9.1	8.4	7.9	7.4	7.0	6.6	6.2	5.9	5.6	5.3	5.1	4.9	4.7	4.5	4.3
	42.5	3.0 - 31.3	12.0	12.0	11.5	10.6	9.8	9.1	8.5	8.0	7.5	7.1	6.7	6.3	6.0	5.7	5.4	5.1	4.9	4.7	4.5	4.3
	40	3.0 - 31.6	12.0	12.0	11.6	10.7	9.9	9.2	8.6	8.1	7.6	7.2	6.8	6.4	6.0	5.7	5.4	5.1	4.9	4.7	4.5	4.3
	37.5	3.0 - 31.9	12.0	12.0	11.7	10.8	10.0	9.3	8.7	8.2	7.7	7.3	6.9	6.5	6.1	5.8	5.5	5.2	5.0	4.8	4.6	4.4
35	3.0 - 32.1	12.0	12.0	11.8	10.9	10.1	9.4	8.8	8.3	7.8	7.4	7.0	6.6	6.2	5.9	5.6	5.3	5.1	4.9	4.7	4.5	
32.5	3.0 - 32.3	12.0	12.0	11.9	11.0	10.2	9.5	8.9	8.4	7.9	7.5	7.1	6.7	6.3	6.0	5.7	5.4	5.1	4.9	4.7	4.5	
30	3.0 - 30.0	12.0	12.0																			
25	3.0 - 25.0	12.0																				

Ausladung (m) / portée (m)		25	30	32.5	35	37.5	40	42.5	45	47.5	50	52.5	55	57.5	60	62.5	65	67.5	70	72.5	75
Auslegerlänge (m) / flèche (m)	75	3.0 - 45.7	6.0	6.0	6.0	6.0	6.0	6.0	6.0	5.7	5.4	5.1	4.8	4.6	4.4	4.1	3.9	3.8	3.6	3.4	3.3
	72.5	3.0 - 47.3	6.0	6.0	6.0	6.0	6.0	6.0	6.0	6.0	6.0	5.6	5.3	5.0	4.8	4.5	4.3	4.1	3.9	3.8	3.6
	70	3.0 - 50.7	6.0	6.0	6.0	6.0	6.0	6.0	6.0	6.0	6.0	6.0	5.8	5.5	5.2	4.9	4.7	4.5	4.3	4.1	3.9
	67.5	3.0 - 51.8	6.0	6.0	6.0	6.0	6.0	6.0	6.0	6.0	6.0	6.0	5.9	5.6	5.3	5.1	4.8	4.6	4.4	4.2	4.0
	65	3.0 - 52.7	6.0	6.0	6.0	6.0	6.0	6.0	6.0	6.0	6.0	6.0	6.0	5.6	5.4	5.2	4.9	4.7	4.5	4.3	4.1
	62.5	3.0 - 53.4	6.0	6.0	6.0	6.0	6.0	6.0	6.0	6.0	6.0	6.0	6.0	5.8	5.5	5.2	5.0	4.8	4.6	4.4	4.2
	60	3.0 - 54.8	6.0	6.0	6.0	6.0	6.0	6.0	6.0	6.0	6.0	6.0	6.0	6.0	5.7	5.4	5.1	4.9	4.7	4.5	4.3
	57.5	3.0 - 55.8	6.0	6.0	6.0	6.0	6.0	6.0	6.0	6.0	6.0	6.0	6.0	6.0	5.8	5.5	5.2	5.0	4.8	4.6	4.4
	55	3.0 - 55.0	6.0	6.0	6.0	6.0	6.0	6.0	6.0	6.0	6.0	6.0	6.0	6.0	6.0	5.8	5.5	5.2	5.0	4.8	4.6
	52.5	3.0 - 52.5	6.0	6.0	6.0	6.0	6.0	6.0	6.0	6.0	6.0	6.0	6.0	6.0	6.0	5.8	5.5	5.2	5.0	4.8	4.6
	50	3.0 - 50.0	6.0	6.0	6.0	6.0	6.0	6.0	6.0	6.0	6.0	6.0	6.0	6.0	6.0	5.8	5.5	5.2	5.0	4.8	4.6
	47.5	3.0 - 47.5	6.0	6.0	6.0	6.0	6.0	6.0	6.0	6.0	6.0	6.0	6.0	6.0	6.0	5.8	5.5	5.2	5.0	4.8	4.6
	45	3.0 - 45.0	6.0	6.0	6.0	6.0	6.0	6.0	6.0	6.0	6.0	6.0	6.0	6.0	6.0	5.8	5.5	5.2	5.0	4.8	4.6
	42.5	3.0 - 42.5	6.0	6.0	6.0	6.0	6.0	6.0	6.0	6.0	6.0	6.0	6.0	6.0	6.0	5.8	5.5	5.2	5.0	4.8	4.6
	40	3.0 - 40.0	6.0	6.0	6.0	6.0	6.0	6.0	6.0	6.0	6.0	6.0	6.0	6.0	6.0	5.8	5.5	5.2	5.0	4.8	4.6
	37.5	3.0 - 37.5	6.0	6.0	6.0	6.0	6.0	6.0	6.0	6.0	6.0	6.0	6.0	6.0	6.0	5.8	5.5	5.2	5.0	4.8	4.6
35	3.0 - 35.0	6.0	6.0	6.0	6.0	6.0	6.0	6.0	6.0	6.0	6.0	6.0	6.0	6.0	5.8	5.5	5.2	5.0	4.8	4.6	
32.5	3.0 - 32.5	6.0	6.0	6.0	6.0	6.0	6.0	6.0	6.0	6.0	6.0	6.0	6.0	6.0	5.8	5.5	5.2	5.0	4.8	4.6	
30	3.0 - 30.0	6.0	6.0																		
25	3.0 - 25.0	6.0																			

	Motor FU (kW)	45		Motor FU (kW)	9.2		Motor FU (kW)	2 x 7.5
	m/min.	0 - 140		m/min.	0 - 100		r.p.m	0.8



Kaufmann Turmkrane AG
 Rütisbergstr. 8, CH-8156 Oberhasli / ZH
 Tel. 043 411 08 30
www.turmkrane.ch / info@krankaufmann.ch