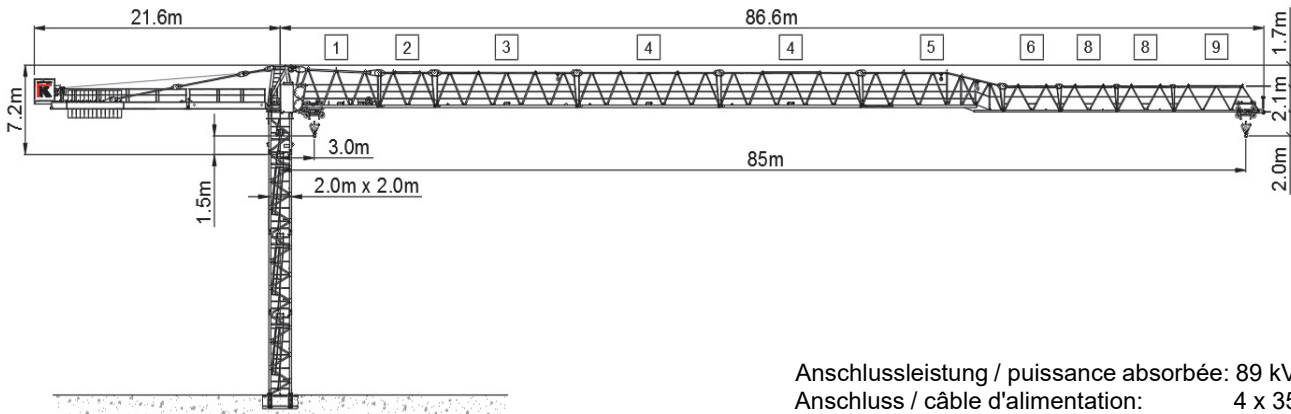


Wilbert WT 420 e.tronic (45 kW)



Anschlussleistung / puissance absorbée: 89 kVA
 Anschluss / câble d'alimentation: 4 x 35□
 Absicherung / sécurisée: 100 A
 Anlaufstrom / courant de pointe: 95 A

Ausladung (m) / portée (m)		30	32.5	35	37.5	40	42.5	45	47.5	50	52.5	55	57.5	60	62.5	65	67.5	70	72.5	75	77.5	80	82.5	85		
Auslegerlänge (m) / flèche (m)	16.0 to 19.0	85.0	3.0 - 18.6	9.4	8.5	7.8	7.2	6.7	6.2	5.8	5.4	5.1	4.8	4.5	4.2	4.0	3.8	3.6	3.4	3.2	3.1	2.9	2.8	2.6	2.5	2.4
		82.5	3.0 - 19.0	9.6	8.8	8.0	7.4	6.9	6.4	5.9	5.5	5.2	4.9	4.6	4.3	4.1	3.9	3.7	3.5	3.3	3.2	3.0	2.9	2.7	2.6	
		80.0	3.0 - 19.3	9.8	8.9	8.2	7.6	7.0	6.5	6.1	5.7	5.3	5.0	4.7	4.4	4.2	4.0	3.8	3.6	3.4	3.2	3.1	2.9	2.8		
		77.5	3.0 - 20.5	10.5	9.6	8.8	8.1	7.5	7.0	6.5	6.1	5.7	5.4	5.1	4.8	4.5	4.3	4.1	3.9	3.7	3.5	3.4	3.2			
		75.0	3.0 - 22.0	11.4	10.4	9.5	8.8	8.2	7.6	7.1	6.7	6.3	5.9	5.6	5.3	5.0	4.7	4.5	4.3	4.1	3.9	3.7				
		72.5	3.0 - 23.3	12.1	11.1	10.2	9.4	8.8	8.2	7.6	7.1	6.7	6.3	6.0	5.7	5.4	5.1	4.8	4.6	4.4	4.2					
		70.0	3.0 - 24.1	12.6	11.5	10.6	9.8	9.1	8.5	7.9	7.4	7.0	6.5	6.2	5.9	5.6	5.3	5.1	4.8	4.6	4.4					
		67.5	3.0 - 24.8	13.0	11.9	10.9	10.1	9.4	8.8	8.2	7.7	7.2	6.8	6.5	6.1	5.8	5.5	5.2	5.0							
		65.0	3.0 - 26.1	13.8	12.6	11.6	10.7	10.0	9.3	8.7	8.2	7.7	7.3	6.9	6.5	6.2	5.9	5.6								
		62.5	3.0 - 26.9	14.2	13.0	12.0	11.1	10.3	9.6	9.0	8.5	8.0	7.5	7.1	6.8	6.4	6.1									
		60.0	3.0 - 27.9	14.8	13.6	12.5	11.6	10.8	10.0	9.4	8.8	8.3	7.9	7.4	7.1	6.7										
		57.5	3.0 - 28.4	15.1	13.8	12.7	11.8	11.0	10.2	9.6	9.0	8.5	8.0	7.6	7.2											
		55.0	3.0 - 29.1	15.5	14.2	13.1	12.1	11.3	10.5	9.8	9.3	8.7	8.2	7.8												
		52.5	3.0 - 29.3	15.6	14.3	13.2	12.2	11.3	10.6	9.9	9.3	8.8	8.3													
		50.0	3.0 - 29.6	15.8	14.4	13.3	12.3	11.5	10.7	10.0	9.4	8.9														
		47.5	3.0 - 29.7	15.9	14.5	13.4	12.4	11.5	10.8	10.1	9.5															
		45.0	3.0 - 29.7	15.9	14.5	13.4	12.4	11.5	10.8	10.1																
		42.5	3.0 - 29.8	15.9	14.6	13.4	12.4	11.6	10.8																	
		40.0	3.0 - 29.9	15.9	14.6	13.5	12.5	11.6																		
		37.5	3.0 - 30.0	16.0	14.6	13.5	12.5																			
35.0	3.0 - 30.0	16.0	14.6	13.5																						
32.5	3.0 - 30.0	16.0	14.7																							
30.0	3.0 - 30.0	16.0																								

Tragfähigkeit (t) / capacité de charge (t)

Ausladung (m) / portée (m)		30	32.5	35	37.5	40	42.5	45	47.5	50	52.5	55	57.5	60	62.5	65	67.5	70	72.5	75	77.5	80	82.5	85		
Auslegerlänge (m) / flèche (m)	8.0 to 10.0	85	3.0 - 35.9	8.0	8.0	8.0	7.6	7.1	6.6	6.2	5.8	5.5	5.2	4.9	4.6	4.4	4.2	4.0	3.8	3.6	3.5	3.3	3.2	3.0	2.9	2.8
		82.5	3.0 - 36.7	8.0	8.0	8.0	7.8	7.3	6.8	6.3	5.9	5.6	5.3	5.0	4.7	4.5	4.3	4.1	3.9	3.7	3.6	3.4	3.3	3.1	3.0	3.0
		80	3.0 - 37.3	8.0	8.0	8.0	8.0	7.4	6.9	6.5	6.1	5.7	5.4	5.1	4.8	4.6	4.4	4.2	4.0	3.8	3.6	3.5	3.3	3.2		
		77.5	3.0 - 39.6	8.0	8.0	8.0	8.0	7.9	7.4	6.9	6.5	6.1	5.8	5.5	5.2	4.9	4.7	4.5	4.3	4.1	3.9	3.8	3.6			
		75	3.0 - 42.5	8.0	8.0	8.0	8.0	8.0	8.0	7.5	7.1	6.7	6.3	6.0	5.7	5.4	5.1	4.9	4.7	4.5	4.3	4.1				
		72.5	3.0 - 45.1	8.0	8.0	8.0	8.0	8.0	8.0	8.0	7.5	7.1	6.7	6.4	6.1	5.8	5.5	5.2	5.0	4.8	4.6					
		70	3.0 - 47.4	8.0	8.0	8.0	8.0	8.0	8.0	8.0	8.0	7.5	7.1	6.8	6.4	6.1	5.8	5.6	5.3	5.1						
		67.5	3.0 - 48.4	8.0	8.0	8.0	8.0	8.0	8.0	8.0	8.0	7.7	7.3	6.9	6.6	6.3	6.0	5.7	5.5							
		65	3.0 - 50.5	8.0	8.0	8.0	8.0	8.0	8.0	8.0	8.0	8.0	7.7	7.3	6.9	6.6	6.3	6.0								
		62.5	3.0 - 52.1	8.0	8.0	8.0	8.0	8.0	8.0	8.0	8.0	8.0	7.9	7.5	7.2	6.8	6.5									
		60	3.0 - 54.0	8.0	8.0	8.0	8.0	8.0	8.0	8.0	8.0	8.0	8.0	7.8	7.5	7.1										
		57.5	3.0 - 55.0	8.0	8.0	8.0	8.0	8.0	8.0	8.0	8.0	8.0	8.0	8.0	7.6											
		55	3.0 - 55.0	8.0	8.0	8.0	8.0	8.0	8.0	8.0	8.0	8.0	8.0	8.0												

Tragfähigkeit (t) / capacité de charge (t)

Motor FU (kW) 45 m/min. 0 - 132	Motor FU (kW) 7.5 m/min. 8 - 100	Motor FU (kW) 2 x 9.2 r.p.m. 0.8
------------------------------------	-------------------------------------	-------------------------------------



Kaufmann Turmkrane AG
 Rütisbergstr. 8, CH-8156 Oberhasli / ZH
 Tel. 043 411 08 30
www.turmkrane.ch / info@krankaufmann.ch