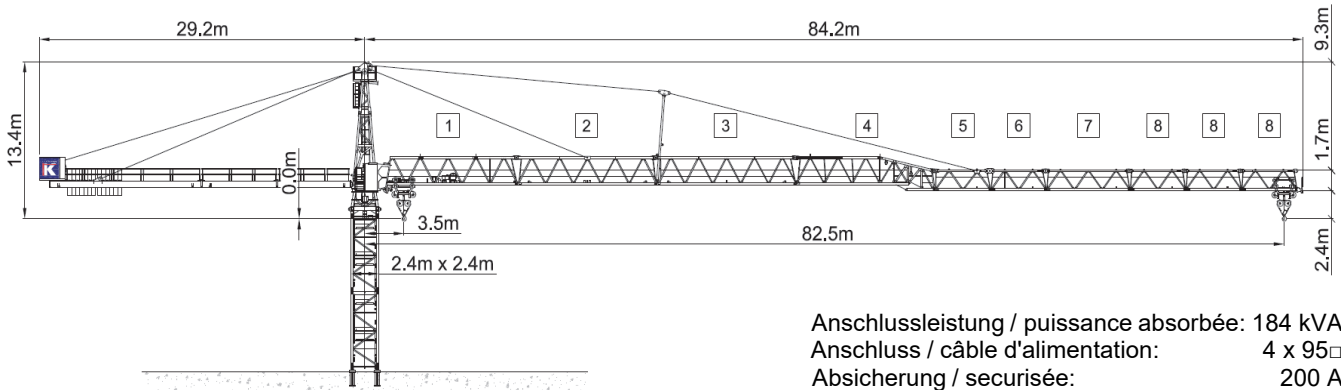


# Wilbert WT 650.32 e.tronic (110 kW)



Anschlussleistung / puissance absorbée: 184 kVA  
 Anschluss / câble d'alimentation: 4 x 95□  
 Absicherung / sécurisée: 200 A  
 Anlaufstrom / courant de pointe maxi: 231 A

Ausladung (m) / portée (m)		30	32.5	35	37.5	40	42.5	45	47.5	50	52.5	55	57.5	60	62.5	65	67.5	70	72.5	75	77.5	80	82.5		
Auslegerlänge (m) / flèche (m)	32.0 to	82.5	3.5 - 19.2	19.8	18.2	16.7	15.5	14.4	13.4	12.6	11.8	11.1	10.5	10.0	9.4	9.0	8.5	8.1	7.8	7.4	7.1	6.8	6.5	6.2	6.0
		80	3.5 - 20.1	20.8	19.0	17.5	16.2	15.1	14.1	13.2	12.4	11.7	11.1	10.5	9.9	9.4	9.0	8.6	8.2	7.8	7.5	7.2	6.9	6.6	
		77.5	3.5 - 20.8	21.6	19.8	18.3	16.9	15.7	14.7	13.8	12.9	12.2	11.5	10.9	10.4	9.9	9.4	9.0	8.5	8.2	7.8	7.5	7.2		
		75	3.5 - 21.2	22.1	20.3	18.7	17.3	16.1	15.0	14.1	13.3	12.5	11.8	11.2	10.6	10.1	9.6	9.2	8.8	8.4	8.0	7.7			
		72.5	3.5 - 21.6	22.5	20.6	19.0	17.6	16.4	15.3	14.4	13.5	12.7	12.0	11.4	10.8	10.3	9.8	9.4	8.9	8.6	8.2				
		70	3.5 - 21.7	22.6	20.7	19.1	17.7	16.5	15.4	14.4	13.6	12.8	12.1	11.5	10.9	10.4	9.9	9.4	9.0	8.6					
		67.5	3.5 - 21.8	22.7	20.8	19.2	17.8	16.6	15.5	14.5	13.7	12.9	12.2	11.5	11.0	10.4	9.9	9.5	9.1						
		65	3.5 - 22.1	23.0	21.1	19.5	18.0	16.8	15.7	14.7	13.8	13.1	12.3	11.7	11.1	10.6	10.1	9.6							
		62.5	3.5 - 22.1	23.1	21.2	19.5	18.1	16.9	15.7	14.8	13.9	13.1	12.4	11.7	11.1	10.6	10.1								
		60	3.5 - 22.3	23.3	21.4	19.7	18.3	17.0	15.9	14.9	14.0	13.2	12.5	11.8	11.2	10.7									
		57.5	3.5 - 22.4	23.4	21.5	19.8	18.3	17.1	16.0	15.0	14.1	13.3	12.6	11.9	11.3										
		55	3.5 - 22.6	23.6	21.6	19.9	18.5	17.2	16.1	15.1	14.2	13.4	12.7	12.0											
		52.5	3.5 - 22.6	23.7	21.7	20.0	18.5	17.3	16.1	15.1	14.2	13.4	12.7												
		50	3.5 - 22.9	23.9	21.9	20.2	18.8	17.5	16.3	15.3	14.4	13.6													
		47.5	3.5 - 23.1	24.2	22.2	20.5	19.0	17.7	16.5	15.5	14.6														
		45	3.5 - 23.4	24.5	22.5	20.7	19.2	17.9	16.7	15.7															
42.5	3.5 - 23.7	24.9	22.8	21.1	19.5	18.2	17.0																		
40	3.5 - 24.1	25.3	23.2	21.4	19.9	18.5																			
37.5	3.5 - 24.2	25.5	23.4	21.6	20.0																				
35	3.5 - 24.5	25.8	23.6	21.8																					
30	3.5 - 24.7	26.0																							

Ausladung (m) / portée (m)		30	32.5	35	37.5	40	42.5	45	47.5	50	52.5	55	57.5	60	62.5	65	67.5	70	72.5	75	77.5	80	82.5		
Auslegerlänge (m) / flèche (m)	16.0 to	82.5	3.5 - 37.0	16.0	16.0	16.0	15.8	14.7	13.7	12.9	12.1	11.4	10.8	10.3	9.7	9.3	8.8	8.4	8.1	7.7	7.4	7.1	6.8	6.5	6.3
		80	3.5 - 38.6	16.0	16.0	16.0	16.0	15.4	14.4	13.5	12.7	12.0	11.4	10.8	10.2	9.7	9.3	8.9	8.5	8.1	7.8	7.5	7.2	6.9	
		77.5	3.5 - 40.1	16.0	16.0	16.0	16.0	16.0	15.0	14.1	13.2	12.5	11.8	11.2	10.7	10.2	9.7	9.3	8.8	8.5	8.1	7.8	7.5		
		75	3.5 - 40.9	16.0	16.0	16.0	16.0	16.0	15.3	14.4	13.6	12.8	12.1	11.5	10.9	10.4	9.9	9.5	9.1	8.7	8.3	8.0			
		72.5	3.5 - 41.6	16.0	16.0	16.0	16.0	16.0	15.6	14.7	13.8	13.0	12.3	11.7	11.1	10.6	10.1	9.7	9.2	8.9	8.5				
		70	3.5 - 41.8	16.0	16.0	16.0	16.0	16.0	15.7	14.7	13.9	13.1	12.4	11.8	11.2	10.7	10.2	9.7	9.3	8.9					
		67.5	3.5 - 41.8	16.0	16.0	16.0	16.0	16.0	15.7	14.8	13.9	13.1	12.4	11.8	11.2	10.7	10.2	9.7	9.3						
		65	3.5 - 42.5	16.0	16.0	16.0	16.0	16.0	16.0	15.0	14.1	13.4	12.6	12.0	11.4	10.9	10.4	9.9							
		62.5	3.5 - 42.6	16.0	16.0	16.0	16.0	16.0	16.0	15.1	14.2	13.4	12.7	12.0	11.4	10.9	10.4								
		60	3.5 - 43.0	16.0	16.0	16.0	16.0	16.0	16.0	15.2	14.3	13.5	12.8	12.1	11.5	11.0									
		57.5	3.5 - 43.1	16.0	16.0	16.0	16.0	16.0	16.0	15.3	14.4	13.6	12.9	12.2	11.6										
		55	3.5 - 43.4	16.0	16.0	16.0	16.0	16.0	16.0	15.4	14.5	13.7	13.0	12.3											
		52.5	3.5 - 43.6	16.0	16.0	16.0	16.0	16.0	16.0	15.4	14.5	13.7	13.0												
		50	3.5 - 44.0	16.0	16.0	16.0	16.0	16.0	16.0	15.6	14.7	13.9													
		47.5	3.5 - 44.5	16.0	16.0	16.0	16.0	16.0	16.0	15.8	14.9														
		45	3.5 - 45.0	16.0	16.0	16.0	16.0	16.0	16.0	16.0															
40	3.5 - 40.0	16.0	16.0	16.0	16.0	16.0																			
30	3.5 - 30.0	16.0																							

	Motor FU (kW)	110		Motor FU (kW)	15		Motor FU (kW)	2 x 11
	m/min.	0 - 240		m/min.	8 - 100		r.p.m	0.8



**Kaufmann Turmkrane AG**  
 Rütisbergstr. 8, CH-8156 Oberhasli / ZH  
 Tel. 043 411 08 30  
[www.turmkrane.ch](http://www.turmkrane.ch) / [info@krankaufmann.ch](mailto:info@krankaufmann.ch)