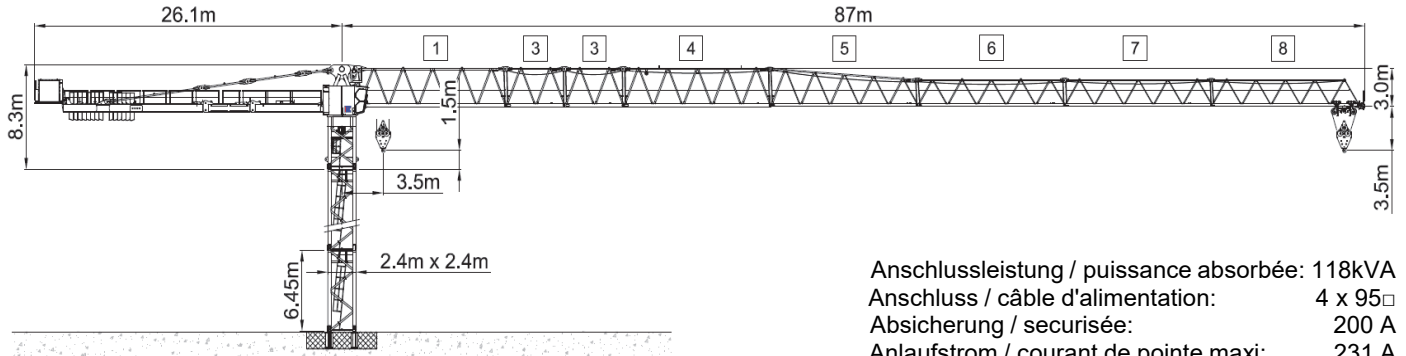


Wilbert WT 720 e.tronic (110 kW)




Anschlussleistung / puissance absorbée: 118kVA
 Anschluss / câble d'alimentation: 4 x 95□
 Absicherung / sécurisée: 200 A
 Anlaufstrom / courant de pointe maxi: 231 A

Ausladung (m) / portée (m)		25	27.5	30	32.5	35	37.5	40	42.5	45	47.5	50	52.5	55	57.5	60	62.5	65	67.5	70	72.5	75	77.5	80	82.5	85	
Auslegerlänge (m) / flèche (m)	85	3.0 - 19.4	24.4	22.0	20.0	18.3	16.9	15.6	14.5	13.6	12.7	11.9	11.2	10.6	10.1	9.5	9.1	8.6	8.2	7.8	7.5	7.2	6.9	6.6	6.3	6.1	5.8
	82.5	3.0 - 20.4	25.8	23.4	21.2	19.4	17.9	16.5	15.4	14.4	13.5	12.7	11.9	11.3	10.7	10.1	9.6	9.2	8.7	8.3	8.0	7.6	7.3	7.0	6.7	6.5	
	80	3.0 - 21.3	27.0	24.4	22.2	20.3	18.7	17.4	16.2	15.1	14.2	13.3	12.5	11.9	11.2	10.7	10.1	9.7	9.2	8.8	8.4	8.1	7.7	7.4	7.1		
	77.5	3.0 - 22.1	28.1	25.4	23.1	21.2	19.5	18.1	16.9	15.7	14.8	13.9	13.1	12.4	11.7	11.1	10.6	10.1	9.6	9.2	8.8	8.4	8.1	7.8			
	75	3.0 - 22.6	28.8	26.0	23.6	21.7	20.0	18.5	17.3	16.1	15.1	14.2	13.4	12.7	12.0	11.4	10.9	10.4	9.9	9.5	9.1	8.7	8.3				
	72.5	3.0 - 23.0	29.3	26.5	24.1	22.1	20.4	18.9	17.6	16.5	15.4	14.5	13.7	13.0	12.3	11.7	11.1	10.6	10.1	9.7	9.2	8.9					
	70	3.0 - 23.1	29.4	26.6	24.2	22.2	20.5	19.0	17.7	16.5	15.5	14.6	13.8	13.0	12.3	11.7	11.2	10.6	10.2	9.7	9.3						
	67.5	3.0 - 23.6	30.1	27.2	24.7	22.7	20.9	19.4	18.1	16.9	15.9	14.9	14.1	13.3	12.6	12.0	11.4	10.9	10.4	9.9							
	65	3.0 - 24.4	31.1	28.1	25.6	23.5	21.7	20.1	18.7	17.5	16.4	15.5	14.6	13.8	13.1	12.5	11.9	11.3	10.8								
	62.5	3.0 - 24.4	31.2	28.2	25.7	23.6	21.7	20.2	18.8	17.6	16.5	15.5	14.7	13.9	13.2	12.5	11.9	11.3									
	60	3.0 - 24.8	31.7	28.6	26.1	23.9	22.1	20.5	19.1	17.9	16.8	15.8	14.9	14.1	13.4	12.7	12.1										
	57.5	3.0 - 25.0	32.0	29.0	26.4	24.2	22.3	20.7	19.3	18.1	17.0	16.0	15.1	14.3	13.5	12.9											
	55	3.0 - 25.3	32.0	29.3	26.7	24.5	22.6	21.0	19.6	18.3	17.2	16.2	15.3	14.5	13.7												
	52.5	3.0 - 25.5	32.0	29.6	26.9	24.7	22.8	21.2	19.7	18.5	17.3	16.3	15.4	14.6													
	50	3.0 - 25.9	32.0	30.0	27.4	25.1	23.2	21.5	20.1	18.8	17.6	16.6	15.7														
	47.5	3.0 - 26.3	32.0	30.5	27.8	25.5	23.5	21.9	20.4	19.1	17.9	16.9															
	45	3.0 - 26.6	32.0	30.9	28.2	25.9	23.9	22.2	20.7	19.3	18.1																
	42.5	3.0 - 26.8	32.0	31.1	28.3	26.0	24.0	22.3	20.8	19.4																	
	40	3.0 - 27.1	32.0	31.5	28.7	26.4	24.3	22.6	21.1																		
	37.5	3.0 - 27.3	32.0	31.8	29.0	26.6	24.6	22.8																			
35	3.0 - 27.6	32.0	32.0	29.3	26.9	24.8																					
32.5	3.0 - 27.7	32.0	32.0	29.4	27.0																						
30	3.0 - 28.0	32.0	32.0	29.7																							
27.5	3.0 - 27.5	32.0	32.0																								
25	3.0 - 25.0	32.0																									

Ausladung (m) / portée (m)		25	27.5	30	32.5	35	37.5	40	42.5	45	47.5	50	52.5	55	57.5	60	62.5	65	67.5	70	72.5	75	77.5	80	82.5	85
Auslegerlänge (m) / flèche (m)	85	3.0 - 38.1	16.0	16.0	16.0	16.0	16.0	15.2	14.2	13.3	12.5	11.8	11.1	10.5	10.0	9.5	9.0	8.6	8.2	7.9	7.5	7.2	6.9	6.6	6.4	6.1
	82.5	3.0 - 40.0	16.0	16.0	16.0	16.0	16.0	16.0	15.0	14.0	13.2	12.4	11.7	11.1	10.6	10.0	9.6	9.1	8.7	8.3	8.0	7.7	7.3	7.1	6.8	
	80	3.0 - 41.7	16.0	16.0	16.0	16.0	16.0	16.0	16.0	15.7	14.7	13.8	13.0	12.3	11.7	11.1	10.5	10.0	9.6	9.2	8.8	8.4	8.1	7.7	7.4	
	77.5	3.0 - 43.2	16.0	16.0	16.0	16.0	16.0	16.0	16.0	16.0	15.3	14.4	13.6	12.8	12.2	11.6	11.0	10.5	10.0	9.6	9.1	8.8	8.4	8.1		
	75	3.0 - 44.1	16.0	16.0	16.0	16.0	16.0	16.0	16.0	16.0	15.6	14.7	13.9	13.1	12.4	11.8	11.3	10.7	10.2	9.8	9.4	9.0	8.6			
	72.5	3.0 - 44.8	16.0	16.0	16.0	16.0	16.0	16.0	16.0	16.0	15.9	15.0	14.1	13.4	12.7	12.0	11.5	10.9	10.4	10.0	9.6	9.2				
	70	3.0 - 44.9	16.0	16.0	16.0	16.0	16.0	16.0	16.0	16.0	16.0	15.0	14.2	13.4	12.7	12.1	11.5	11.0	10.5	10.0	9.6					
	67.5	3.0 - 45.8	16.0	16.0	16.0	16.0	16.0	16.0	16.0	16.0	16.0	15.4	14.5	13.7	13.0	12.4	11.8	11.2	10.7	10.2						
	65	3.0 - 47.2	16.0	16.0	16.0	16.0	16.0	16.0	16.0	16.0	16.0	15.9	15.0	14.2	13.5	12.8	12.2	11.6	11.1							
	62.5	3.0 - 47.3	16.0	16.0	16.0	16.0	16.0	16.0	16.0	16.0	16.0	15.9	15.0	14.2	13.5	12.8	12.2	11.6								
	60	3.0 - 47.9	16.0	16.0	16.0	16.0	16.0	16.0	16.0	16.0	16.0	16.0	15.3	14.4	13.7	13.0	12.4									
	57.5	3.0 - 48.4	16.0	16.0	16.0	16.0	16.0	16.0	16.0	16.0	16.0	16.0	15.4	14.6	13.8	13.2										
	55	3.0 - 48.9	16.0	16.0	16.0	16.0	16.0	16.0	16.0	16.0	16.0	16.0	15.6	14.8	14.0											
	52.5	3.0 - 49.2	16.0	16.0	16.0	16.0	16.0	16.0	16.0	16.0	16.0	16.0	15.7	14.9												
	50	3.0 - 49.9	16.0	16.0	16.0	16.0	16.0	16.0	16.0	16.0	16.0	16.0	16.0													
	47.5	3.0 - 50.5	16.0	16.0	16.0	16.0	16.0	16.0	16.0	16.0	16.0	16.0														
45	3.0 - 45.0	16.0	16.0	16.0	16.0	16.0	16.0	16.0	16.0	16.0																
40	3.0 - 40.0	16.0	16.0	16.0	16.0	16.0	16.0	16.0																		
35	3.0 - 35.0	16.0	16.0	16.0	16.0	16.0																				
30	3.0 - 30.0	16.0	16.0	16.0																						
25	3.0 - 25.0	16.0																								

↑	Motor FU (kW)	110	↔	Motor FU (kW)	15	↻	Motor FU (kW)	2 x 11
	m/min.	0 - 240		m/min.	8 - 100		r.p.m	0.8

KAUFMANN

Kaufmann Turmkrane AG
 Rütisbergstr. 8, CH-8156 Oberhasli / ZH
 Tel. 043 411 08 30
www.turmkrane.ch / info@krankaufmann.ch