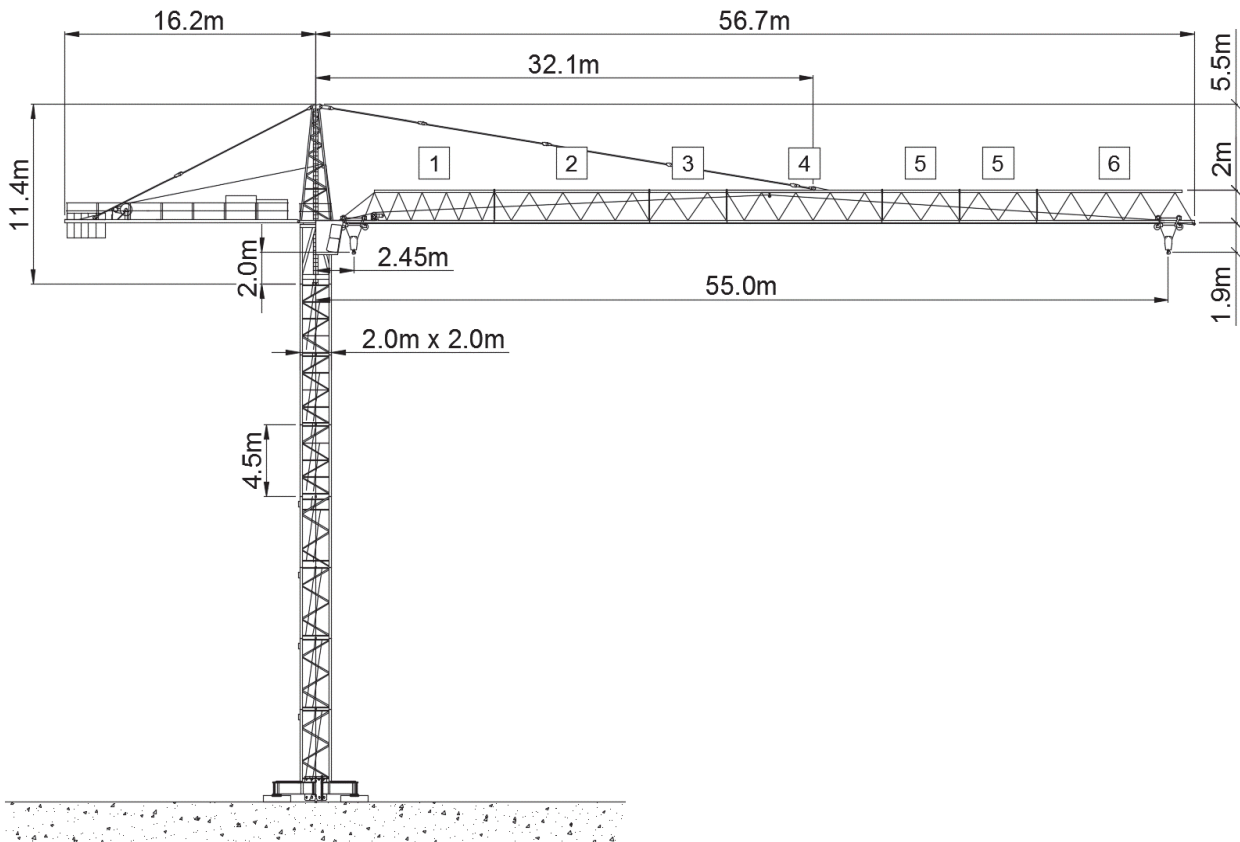






Wolff WK 120 SL (37 kW)



Anschlussleistung / puissance absorbée: 66 kVA
 Anschluss / câble d'alimentation: 4 x 35□
 Absicherung / sécurisée: 100 A
 Anlaufstrom / courant de pointe maxi: 206 A

Ausladung (m) / portée (m)			20	25	30	35	40	45	50	55		
Auslegerlänge (m) flèche (m)	55	2.45 - 14.2	 8.0 to	5.6	4.3	3.5	2.9	2.4	2.1	1.8	1.6	Tragfähigkeit (t) capacité de charge (t)
	50	2.45 - 17.5		7.0	5.4	4.4	3.7	3.1	2.7	2.4		
	45	2.45 - 17.5		7.0	5.4	4.4	3.7	3.1	2.7			
	40	2.45 - 17.5		7.0	5.4	4.4	3.7	3.1				
	35	2.45 - 17.5		7.0	5.4	4.4	3.7					
	30	2.45 - 17.5		7	5.4	4.4						

 Motor (kW) 37 m/min. 1.6 - 22 / 58 / 110	 Motor (kW) 5.5 m/min. 1 - 85	 Motor (kW) 2 x 5 r.p.m. 0.7
---	---	--