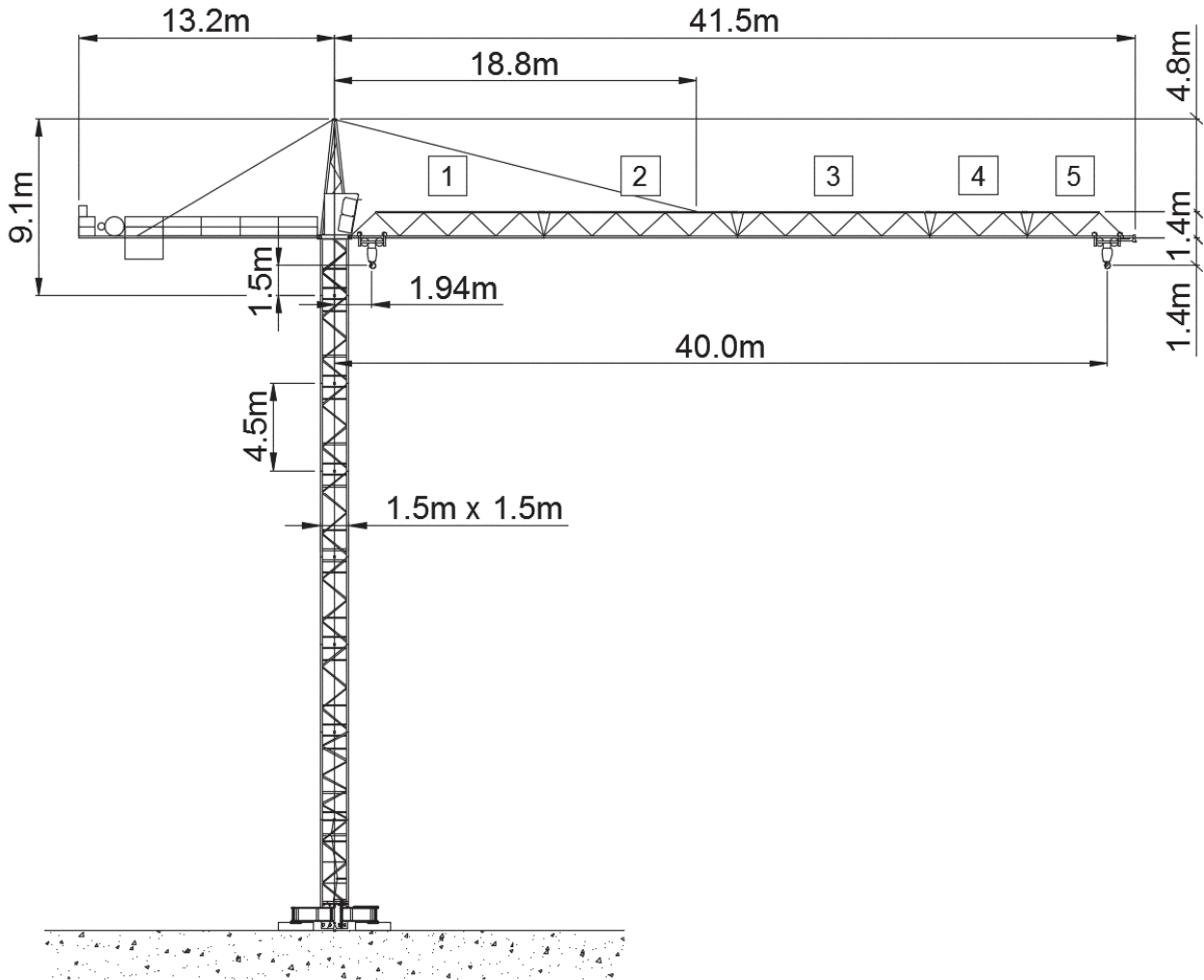






Wolff WK 62 SL



Anschlussleistung / puissance absorbée: 36 kVA
 Anschluss / câble d'alimentation: 4 x 16□
 Absicherung / sécurisée: 63 A
 Anlaufstrom / courant de pointe maxi: 112 A

Ausladung (m) / portée (m)			20	25	30	35	40		
Auslegerlänge (m) flèche (m)	40	1.94 - 14.7	 4.0 to	2.85	2.20	1.78	1.48	1.25	Tragfähigkeit (t) capacité de charge (t)
	35	1.94 - 14.9		2.89	2.24	1.80	1.50		
	30	1.94 - 16.2		3.18	2.47	2.00			
	25	1.94 - 16.3		3.20	2.50				
	20	1.94 - 16.5		3.25					

 Motor (kW) 22 m/min. 25 / 65	 Motor (kW) 2.3 m/min. 21 / 42	 Motor (kW) 4 r.p.m 0.95
---	--	--