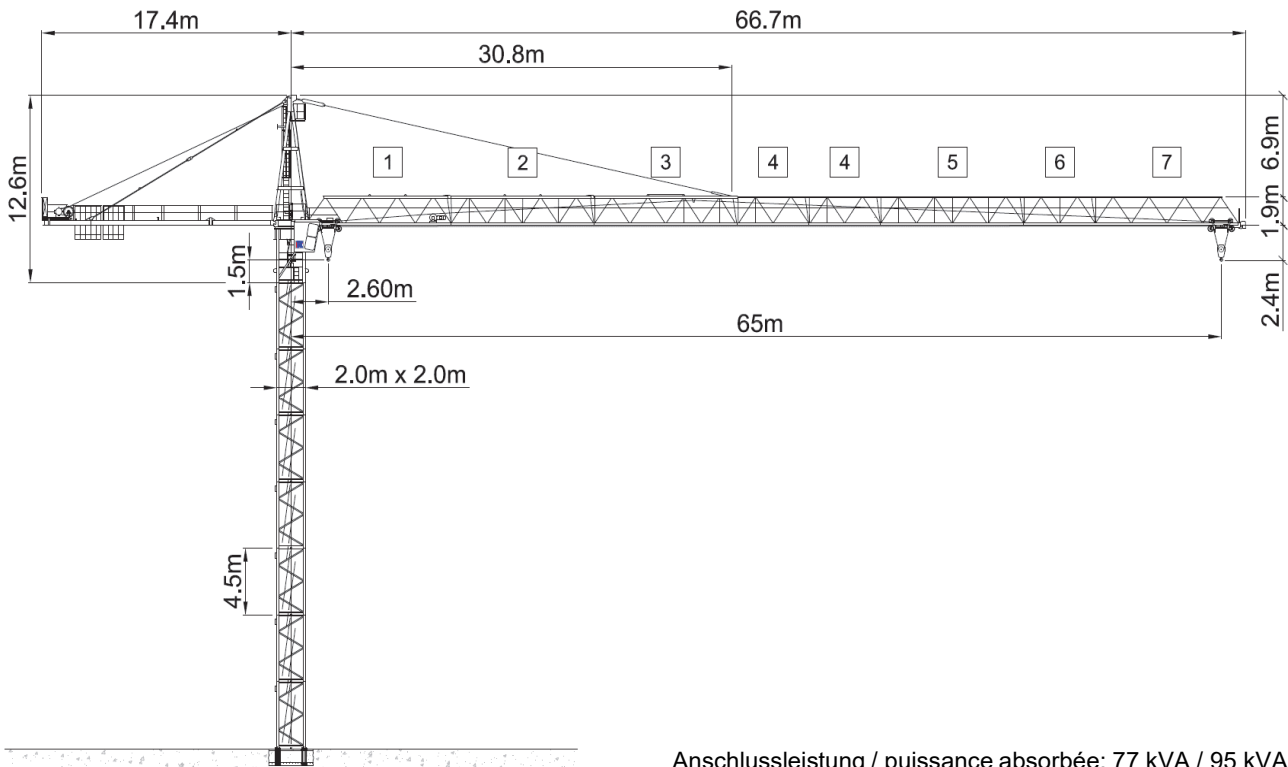


Wolff WK 6522 SL 6/12



Anschlussleistung / puissance absorbée: 77 kVA / 95 kVA
 Anschluss / câble d'alimentation: 4 x 35[□] / 4 x 50[□]
 Absicherung / sécurisée: 100 A / 125 A
 Anlaufstrom / courant de pointe maxi: 262 A / 330 A

Ausladung (m) / portée (m)			25	30	35	40	45	50	55	60	65	Tragfähigkeit (t) capacité de charge (t)
Auslegerlänge (m) flèche (m)	65	2.6 - 15.5	6.8	5.4	4.4	3.7	3.2	2.7	2.4	2.1	1.8	
	60	2.6 - 16.6	7.4	5.9	4.9	4.1	3.5	3.0	2.6	2.3		
	55	2.6 - 17.6	7.9	6.4	5.3	4.4	3.8	3.3	2.9			
	50	2.6 - 18.7	8.5	6.8	5.7	4.8	4.1	3.6				
	45	2.6 - 20.2	9.4	7.5	6.3	5.3	4.6					
	40	2.6 - 21.0	9.5	7.9	6.6	5.6						
	35	2.6 - 21.4	10.0	8.1	6.7							
	30	2.6 - 21.7	10.2	8.2								
			12.0 to									

Ausladung (m) / portée (m)			25	30	35	40	45	50	55	60	65	Tragfähigkeit (t) capacité de charge (t)
Auslegerlänge (m) flèche (m)	65	2.6 - 28.0	6.0	5.5	4.5	3.8	3.3	2.8	2.5	2.2	1.9	
	60	2.6 - 30.0	6.0	6.0	5.0	4.2	3.6	3.1	2.7	2.4		
	55	2.6 - 31.9	6.0	6.0	5.4	4.5	3.9	3.4	3.0			
	50	2.6 - 33.9	6.0	6.0	5.8	4.9	4.2	3.7				
	45	2.6 - 36.8	6.0	6.0	6.0	5.4	4.7					
	40	2.6 - 38.2	6.0	6.0	6.0	5.7						
	35	2.6 - 35.0	6.0	6.0	6.0							
	30	2.6 - 30.0	6.0	6.0								
			6.0 to									

	Motor (kW)	45 / 66		Motor (kW)	7.5		Motor (kW)	2 x 5
	m/min. (45kW)	1.6 - 35 / 63 / 98		m/min.	1 ... 80		r.p.m	0.75
	m/min. (66kW)	1.6 - 42 / 60 / 108						