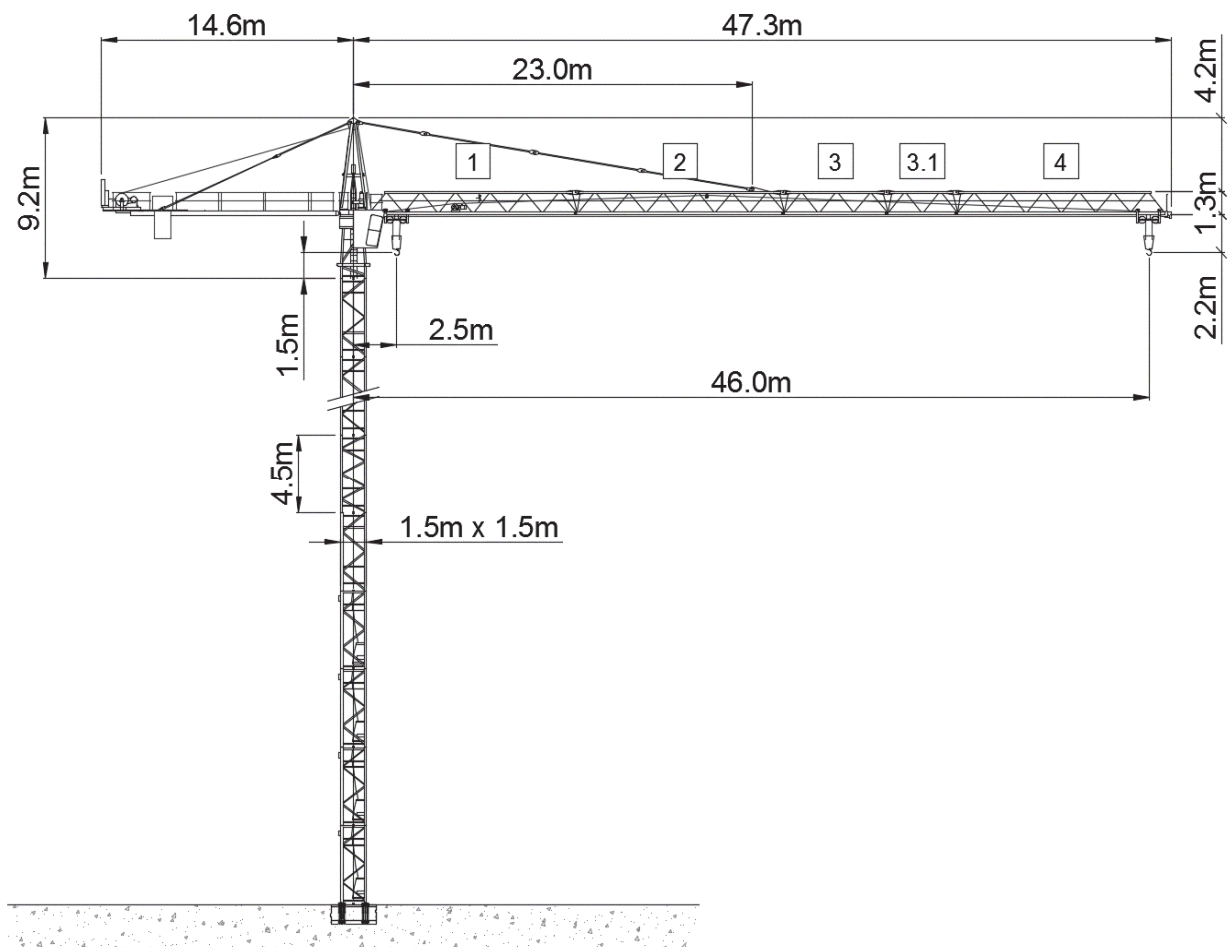






Wolff WK 71 SL



Anschlussleistung / puissance absorbée: 37 kVA
 Anschluss / câble d'alimentation: 4 x 16□
 Absicherung / sécurisée: 63 A
 Anlaufstrom / courant de pointe maxi: 116 A

Ausladung (m) / portée (m)			20	24	26	30	36	42	46		
Auslegerlänge (m) flèche (m)	46	2.5 - 10.6	 6.0 to	3.0	2.4	2.2	1.8	1.4	1.1	1.0	Tragfähigkeit (t) capacité de charge (t)
	42	2.5 - 12.3		3.5	2.8	2.6	2.2	1.7	1.4		
	36	2.5 - 13.6		3.9	3.1	2.9	2.4	2.0			
	30	2.5 - 13.8		4.0	3.2	3.0	2.5				
	24	2.5 - 14.0		4.1	3.3						

 Motor (kW) 22 m/min. 17.5 / 32.5	 Motor (kW) 2.4 m/min. 20/40	 Motor (kW) 4 r.p.m 0.85
---	--	--