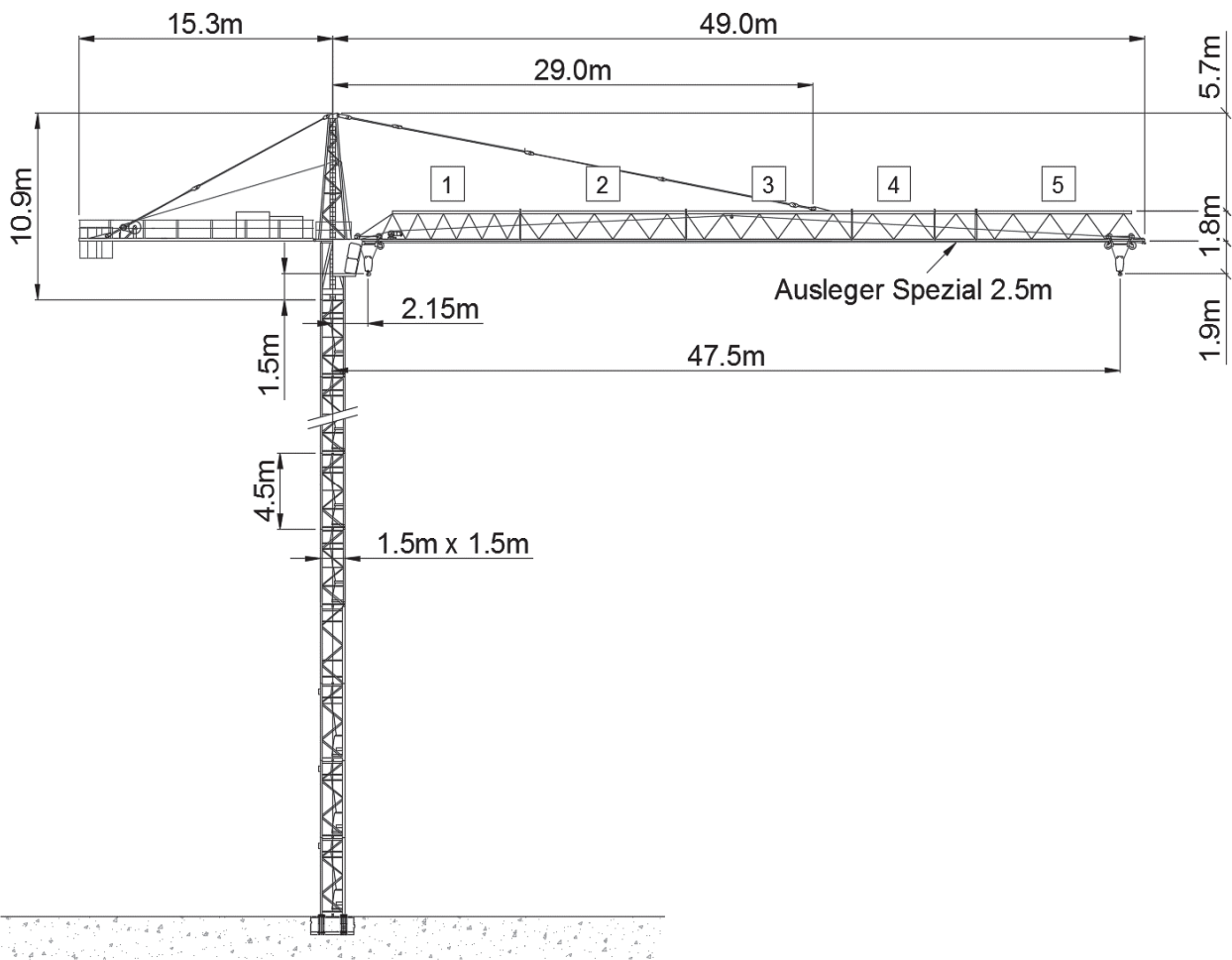


# Wolff WK 90 SL 2



Anschlussleistung / puissance absorbée: 61 kVA / 72 kVA  
 Anschluss / câble d'alimentation: 4 x 35□  
 Absicherung / sécurisée: 100 A  
 Anlaufstrom / courant de pointe maxi: 196 A / 234 A

Ausladung (m) / portée (m)		20	25	30	35	40	42.5	45	47.5		
Auslegerlänge (m) flèche (m)	47.5	2.15 - 11.2	4.3	3.3	2.7	2.2	1.9	1.73	1.6	1.5	Tragfähigkeit (t) capacité de charge (t)
	45	2.15 - 13.2	5.1	4.0	3.25	2.7	2.3	2.15	3.0		
	42.5	2.15 - 13.2	5.1	4.0	3.25	2.7	2.3	2.2			
	40	2.15 - 13.2	5.1	4.0	3.25	2.7	2.3				
	35	2.15 - 13.2	5.1	4.0	3.25	2.7					
	30	2.15 - 14.0	5.4	4.3	3.5						

Motor (kW) 37 / 45 m/min. (37 kW) 22/58/110 m/min. (45 kW) 27/72/132	Motor (kW) 5.5 m/min. 1 - 80	Motor (kW) 2 x 4 r.p.m 0.85
----------------------------------------------------------------------------	---------------------------------	--------------------------------